



## WARNING

**en**

Activate opener only when door/gate is in full view, free of obstruction and properly adjusted. No one should enter or leave while door/gate is in motion. Do not allow children to operate push buttons or remote controls. Do not allow children to play near the door/gate. Risk of explosion if the battery is replaced by an incorrect type.

Do not ingest battery, Chemical Burn Hazard.

This product contains a coin battery. If swallowed, button batteries can cause injuries, or death.

### WARNING

- Keep batteries out of sight and out of the reach of children, button/coin batteries can be dangerous for children.
- Dispose of used button batteries immediately. Do not use defect/swallowed batteries.
- Check periodically if the battery compartments is secure, stop using if defect.
- If batteries might have been swallowed or placed inside any part of the body, seek immediate medical attention.

Your garage door / gate opener receiver and one of the buttons remote control are pre-programmed. If you purchase additional remote controls, the garage door / gate opener must be programmed to accept the new remote code.

**NOTE:** Only the original remote controls from the manufacturer should be used. Remote controls that may look very similar, but do not originate from the manufacturer are not compatible. Such third-party remotes create malfunctions such as automatic opening, and the guarantee on the function and safety expires.

### Programming TT60EVFA-GB, PL750EVA-GBTT:

Program the Receiver to Match Additional Remote Controls using the yellow round button.

1. Press and release the yellow round button on the opener.  
The learn indicator light will glow steadily for 30 seconds (1).
2. Within 30 seconds, press and hold the button on the hand-held remote that you wish to operate your garage door (2).
3. Release the button when the opener light blinks once. It has learned the code. If the light bulb is not installed. Now the opener will operate when the remote control push button is pressed. If you release the remote control push button before the opener light flashes, the opener has not learned the code.

### To Erase all Remote Control Codes:

To deactivate any unwanted remote, first erase all codes: Press and hold the yellow round button on opener until the learn indicator light goes out (approximately 10 seconds). All previous codes are now erased. Reprogram each remote or keyless entry you wish to use.



Our electrical and electronic equipment may not be disposed of with household waste and must be disposed of after use properly in accordance with WEEE Directive EU: 2012/19/ EU; GB UK(NI): SI 2012 nr. 19 on waste electrical and electronic equipment in order to ensure that materials are recycled. Collecting waste electrical equipment separately means environmentally-friendly disposal and is completely free of charge for the consumer.

WEEE reg. no. in Germany: DE66256568.

Any waste packaging left over with the end consumer must be collected separately from mixed waste, in accordance with the Directive. Packaging may not be disposed of with household waste, organic waste or in nature. Packaging material must be separated according to its material and disposed of in the recycling containers provided and in certain council recycling bins.



Our batteries are marketed in compliance with the law. The 'crossed-out waste bin' indicates that batteries may not be disposed of with household waste. Batteries included in the product (technical data). In order to avoid causing harm to the environment or people's health, used batteries must be returned for regulated disposal at council recycling centres or via retail outlets, as is prescribed by law. Batteries may only be brought for disposal once fully discharged and, in the case of lithium batteries, with their terminals taped over. The batteries can be easily removed from our equipment for disposal.

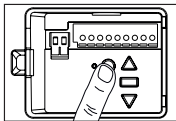
Registration number in Germany: 21002670.

Hereby, Chamberlain GmbH declares that the radio equipment type TX4EVF is in compliance with Directive 2014/53/EU. The full text of the EU declaration of conformity is available at the following internet address: <https://doc.chamberlain.de/>

### Specifications

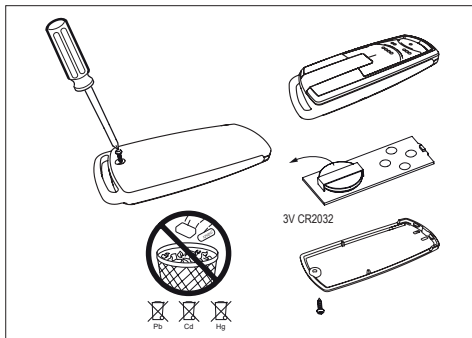
Frequency:	868.30MHz, 868.95MHz, 869.85MHz
Transmitting power:	< 10mW
Battery:	CR2032 / 3V

1



TT60EVFA-GB, PL750EVA-GBTT

2



**Teckentrup UK Limited**  
**Units 2-4, Opus 9 Ind Est**  
**Woburn Road, Winwick Quay**  
**Warrington WA2 8UE. UK**

**Tel: 01925 924050.**

**Fax: 08701 314843**

**Email: [sales@teckentrup.co.uk](mailto:sales@teckentrup.co.uk)**

**[www.teckentrup.co.uk](http://www.teckentrup.co.uk)**



Chamberlain GmbH  
 Saar-Lor-Lux-Str. 19  
 66115 Saarbrücken  
 Germany

