

Floodwater protection door "Teckentrup"

Qualification: Provides watertightness to 1500 mm water column (pressing or standing water)



Tested in accordance with PFB (test centre for building elements 01.2008) regulations for floodwater-proof doors

Text example

Compile and tender according to requirements.
Please refer to Technical Data below for respective details.
Updated 01.01.2011

Position	No. of pieces	Item	Unit price €	Total price €
		Single leaf steel floodwater protection door, double-skinned. Type of Handling DIN right. Door leaf and frame galvanized and prime coated similar to RAL 9002 (grey white), 62 mm thick, rebated on 3-sides. 1.5 mm thick corner frame with 3-sided seal and bottom sill. Mortise lock prepared for profile cylinder in acc. with DIN 18250, FS round handle set, black (plastic). Handle pivoted on bearing with tumbler (Bb) insert and 1 Bb key, 3-piece KO hinge, 1 security bolt, Fabrikat „Teckentrup“ or equivalent.		



Technical data

Product: Floodwater protection door „Teckentrup“

Installation in:

- Masonry
- Concrete

 precondition: water-impermeable wall on site

Dimensions: Width: 625 – 1500 mm
Height: 1750 – 3000 mm

Type of handling: DIN right or DIN left

Door leaf: Double-skinned, **thin rebated** on 3 sides.
Door leaf thickness: 62 mm
Sheet thickness: 1,0 mm
Security bolt: 1

Functioning: If there is a danger of flooding, air can be pumped into a special bulb seal, e.g. using a compressor, via a concealed valve to prevent water entering the building. The door has been tested to 1500 mm water column. In this case, the handle is fitted at a height of 1700 mm. With the standard version, the door provides watertightness to 1000 mm water column. In this case, the handle is fitted at a height of 1200 mm. The door is supplied with conventional hardware.

Frame: 1.5 mm thick corner frame with 3-sided seal and bottom sill. 3 welded-on wall anchor plugs on each side. Filled with mortar.

Surface: Galvanized and prime-coated door leaf and frame, similar to RAL 9002 (grey-white).

Hinges and

closing devices:

- 3-piece KO hinge. Secured hinge bolts.

Fittings:

- Mortise lock prepared for profile cylinder in acc. with DIN 18250
- FS round handle set, black (plastic). Handle pivoted on bearing with tumbler (Bb) insert and 1 Bb key.

Special

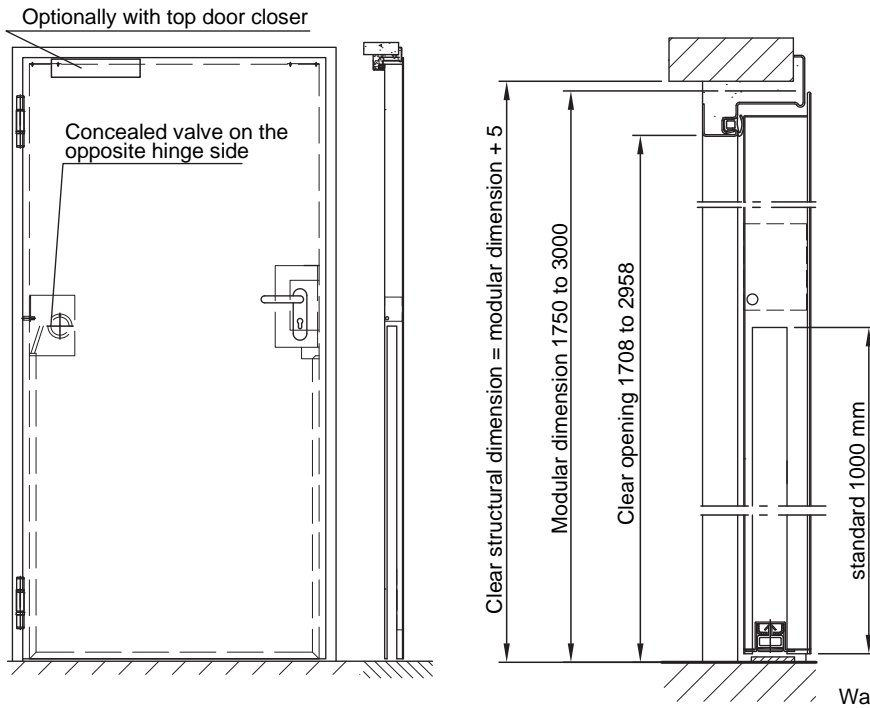
equipment:

- Handle sets / Lever/Knob sets:
 - Plastic
 - Light metal
 - Stainless steel
 - With short plate or rose escutcheon (various makes)
 - With fixed outer knob
- Locks
 - Profile cylinder 40.5 + 40.5 mm
 - Panic locks
- Top door closer
- Door viewer
- Aluminum rain guard

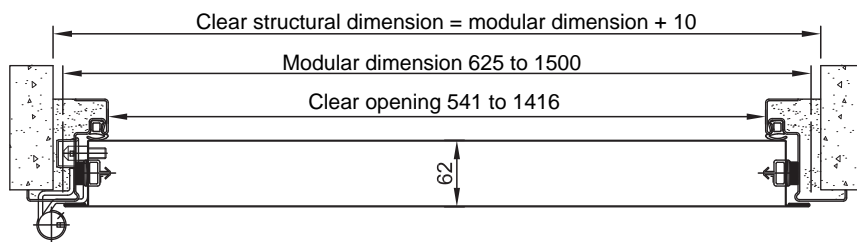
Installation only carried out by trained and qualified Teckentrup staff!

Floodwater protection door "Teckentrup"

Qualification: Provides watertightness to 1500 mm water column (pressing or standing water)

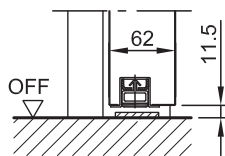


Water side is always on the hinge side



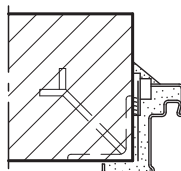
DIN left shown
DIN right laterally reversed

Floor connections



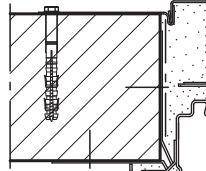
Installation in masonry/ concrete walls

Weld-on assembly

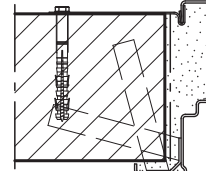


(Corner frame)

Plug assembly



Wall anchor assembly

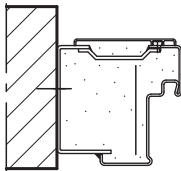


(Closed frame)

Installation with block frame

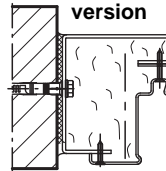
Flush installation between

Standard



Block frame **type 1**

Disassembled version



Block frame **type 2**