



Security steel door

Teckentrup 62-2 Secure 1

Text example:

Secure 1 burglar resistant steel door tested as per LPS1175 Issue 8. Double-leaf door element, type of handing DIN right or DIN left. Door-leaf 62mm thick, rebate on 3 sides. Corner frame 1.5 mm thick with 3-sided seal and optional bottom sill. Door leaf and frame galvanized and prime-coated in Grey white, similar to RAL 9002. Mortice lock with latch lever in accordance with DIN 18250, installed with profile cylinder and cylinder guard. Stainless steel handle set. 1 security bolt and 2 KO hinges with ball bearing.

Compile and tender according to requirements. Please refer to technical data below for respective details. Updated 7th Oct. 19

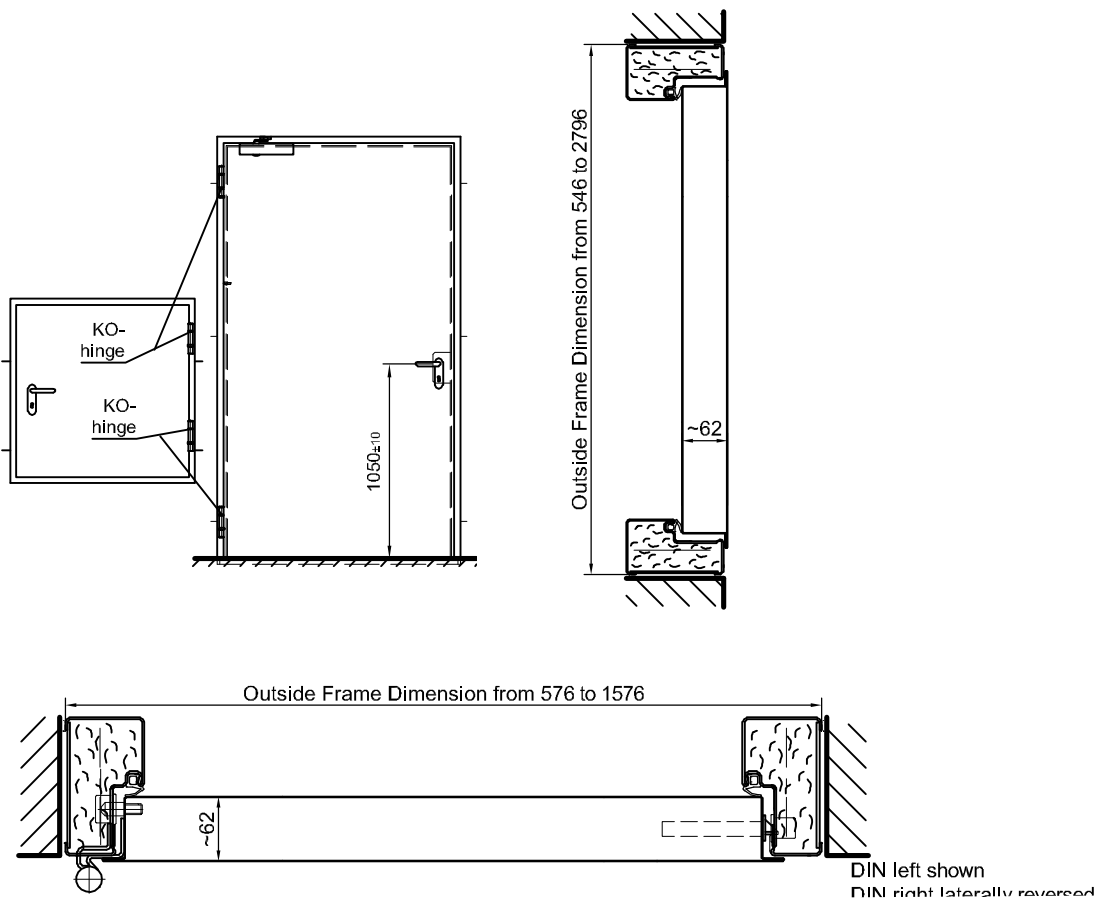
Technical data

Also available in **STAINLESS STEEL**

Building authority approval:	Tested as per LPS1175 Issue 8 Securit Rating A1 (SR1)	Further qualifications (special equipment)	<ul style="list-style-type: none"> ▪ Smoke-proof in accordance with DIN 18095 with top door closer ▪ Sound insulated as per DIN EN 20140/717 Rw 37 dB with retractable bottom seal Rw 35 dB with sliding threshold seal ▪ Fire-proof as per DIN EN 1634 - 1 EI₂-30 ▪ Security as per EN1627 - RC2 ▪ Emergency EN 179
Installation in	<ul style="list-style-type: none"> ▪ Masonry wall min. 115 mm ▪ Concrete wall min. 100 mm ▪ Autoclaved aerated concrete wall -as per DIN 4165 min. 115 mm ▪ -reinforced type min. 115 mm 		
Approved dimensions	Outside frame dimension width: 1076 - 2826 mm Outside frame dimension height: 546 - 2796 mm		
Handing	DIN right or DIN left		
Door leaf (trap door):	Double-skinned, thin rebated on 3 sides Door leaf thickness: 62 mm Sheet thickness: 1,0 or 1,5 mm Security bolt: 1 Insulation: mineral fibre board		
Frame	Corner frame 1,5/2,0 mm thick, with 3-sided seal and bottom sill. Frame fixed with 5 screws on each side. Special equipment: block-, counter- or closed frame.		
Surface	Door leaf/Frame galvanized and prime coated, similar to RAL 9002 (Grey white).		
Hinges closing devices	<ul style="list-style-type: none"> ▪ 2 KO with ball bearings and 1 top door closer ▪ Compensation rings for height adjustment 		
Fittings	<ul style="list-style-type: none"> ▪ Mortice lock with latch lever in accordance with DIN 18250, installed with profile cylinder ▪ Stainless steel handle set. ▪ Cylinder guard 		
Special equipment	<ul style="list-style-type: none"> ▪ Overhead door closer DIN EN 1154 ▪ Door status indicator ▪ Automatic Hold-open devices ▪ Threshold 		

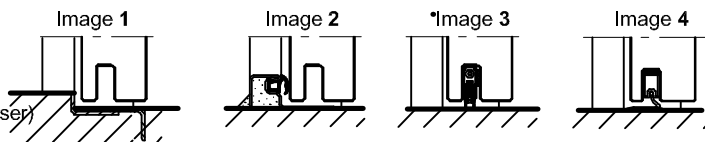


Security steel door Teckentrup 62-2 Secure 1



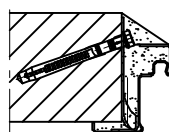
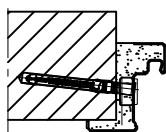
Floor connections:

- Image 1: With bottom buffer
- Image 2: With bottom buffer/seal
- Image 3: With bottom seal (smoke-proof door with overhead door closer)
- Image 4: sliding threshold seal

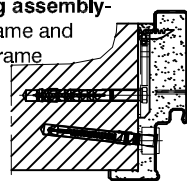


**Installation in masonry/
concrete walls**
concrete walls ≥ 100 mm
masonry walls ≥ 115 mm

Wall plug assembly

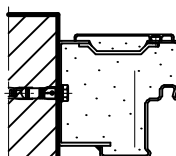


**Wall plug assembly-
closed frame and
counter frame**

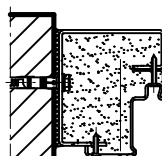


**Installation with block
frame Flush installation
between**
concrete walls ≥ 100 mm
masonry walls ≥ 115 mm

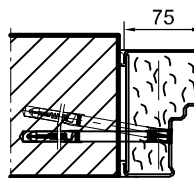
Type 1.1



Type 2.1 Disassembled version



Type 4.1



Type 4.2

