

# Sound-insulated steel door dw 67-2/HS „Teckentrup“ up to $R_w = 55$ dB

## Text example

Compile and tender according to requirements.  
Please refer to technical data below for respective details.  
Updated 1<sup>st</sup> June 2015



Position	No. of pieces	Item	Unit price €	Total price €
		dw 67-2/HS sound-insulated door tested in accordance with DIN EN 20140. Double-leaf door element. Active door leaf DIN right. Door leaf/ Frame galvanized and prime coated similar to RAL 9002 (Grey white). 67 mm thick, rebated on 3-sides, thick rebate with rebate seal. 3-sided corner frame, 2 mm thick, with double sliding threshold seal (55 dB). Mortice lock with latch lever in acc. with DIN 18250, prepared for profile cylinder. FS round handle set, black (plastic). Handle pivoted on bearing with tumbler insert (Bb) and 1 Bb key. Inactive door leaf with concealed door edge bolt, 2 three-piece KO hinges with ball bearings on each side. "Teckentrup" or equivalent.		

## Technical data

**Standard:** Tested as per DIN EN 20140  
Evaluation in acc. with DIN EN ISO 717-1

### Installation in:

- Masonry
- Concrete
- Autoclaved aerated concrete
- Lightweight stud wall
- Wooden frame construction

sound insulation of the wall =  
sound insulation of the door +  $\geq 10$  dB

### Dimensions: (special sizes)

Width: 1500 - 3000 mm  
Height: 1750 - 3000 mm

### Type of handing:

DIN right or DIN left

### Door leaf:

Double-skinned, **thick rebated** on 3 sides and 3-sided rebate seal

#### dw 67-2/HS:

- with double retractable bottom seal  
**55 dB**

The specified values relate to a maximum MD-height of 2500 mm.  
Approved for escape routes and emergency exits.

Door leaf thickness: 67 mm  
Security bolt per leaf: 1  
Reinforcement: flat steel

### Frame:

3-sided corner frame, 2 mm thick with bottom buffer strip and 3-sided seal  
3 wall anchor plugs on each side.  
Special equipment:  
Counter-, closed-, or block frame

### Surface:

Door leaf/Frame galvanized and prime coated, similar to RAL 9002 (Grey white).

### Hinges and closing devices:

- 2 three-piece KO hinges with ball bearings on each side

### Fittings:

Active door leaf:

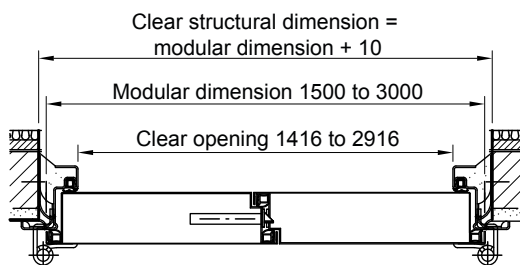
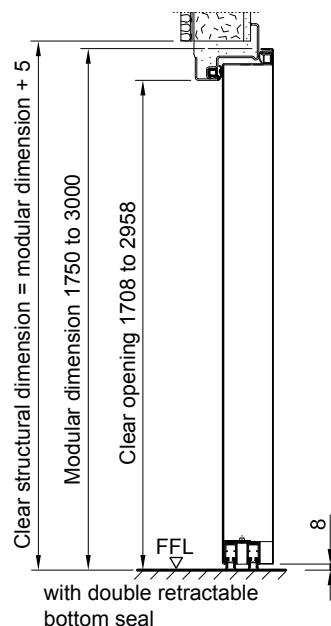
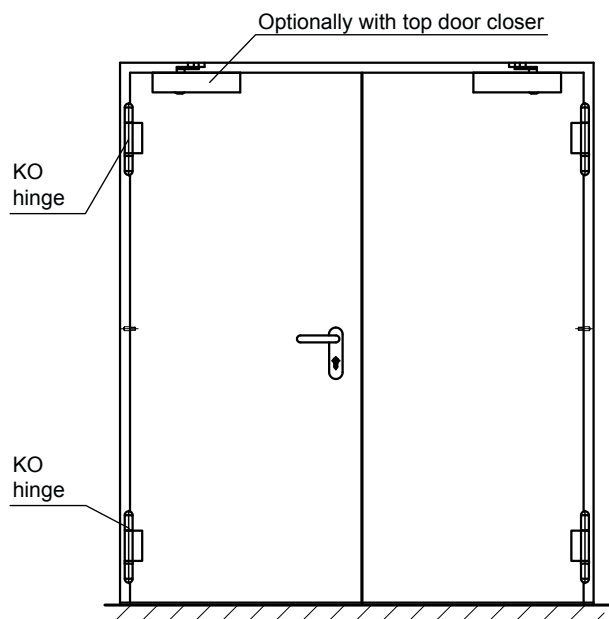
- Mortice lock with latch lever in acc. with DIN 18250, prepared for profile cylinder
  - FS round handle set, black (plastic).  
Handle pivoted on bearing, with tumbler insert (Bb) and 1 Bb key
- Inactive door leaf:
- With concealed door edge bolt

### Special equipment:

- Handle sets / Lever/Knob sets:
  - plastic
  - light metal
  - stainless steel
  - with short plate or rose escutcheon (various makes)
- Locks:
  - profile cylinder 45.5 + 45.5 mm
- Top door closer DIN EN 1154
- Panic locks
- Panic bar handle

# Sound-insulated steel door dw 67-2/HS „Teckentrup“ up to $R_w = 55$ dB

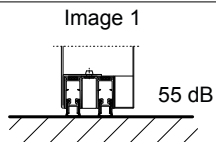
**TECKENTRUP**  
DOOR SOLUTIONS



Active door leaf DIN left shown,  
active door leaf DIN right laterally reversed

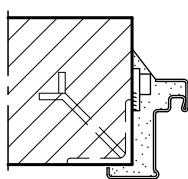
## Floor connections:

Image 1: with double retractable bottom seal



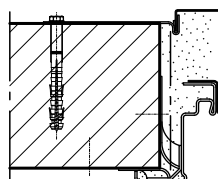
**Installation in masonry/  
concrete walls**  
concrete walls  
masonry walls

Weld-on assembly



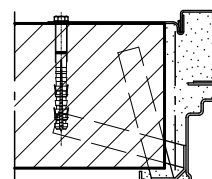
Corner frame

Wall plug assembly



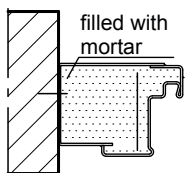
Corner frame with counter frame

Wall anchor assembly



**Installation with block frame**  
Flush installation between  
concrete walls, masonry walls  
dw 67-2/HS

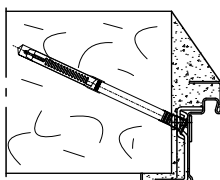
Standard



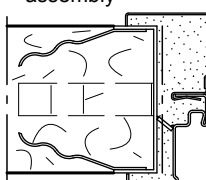
Block frame type 1.2

**Installation in autoclaved  
aerated concrete walls**

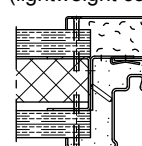
Wall plug assembly



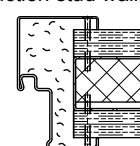
Wall anchor  
assembly



**Installation in installation walls**  
(lightweight construction stud walls)



Corner frame



Closed frame