



Fire-resistant steel door T90-1-FSA „Teckentrup 62“

Door with thick rebate, optionally with glazing

Text example:

T90-1-FSA Steel fire resistant door tested in acc. with DIN 4102. Single leaf door element. Type of handling DIN right. Door leaf 62 mm thick, 3-sided rebated, with thick rebate. Corner frame 2.0 mm thick, with 3-sided seal, without floor recess. Door leaf and frame galvanised and prime coated, grey white similar RAL 9002. Mortise lock with latch function PC perforated acc. DIN 18250. FP-round handle set black (plastic). Handle pivoted on bearing with tumbler insert and 1 Bb-key. 2 CO hinges with ball bearing and 1 top door closer. „Teckentrup DF“ or equivalent.

(Compile and tender according to requirements. Please refer to technical data below for respective details 01.03.2021)

[Text T90-1 online](#)

Technical data

General building authority approval	Z-6.20-2057 tested in acc. to DIN 4102 for installation in interior walls
Installation in	<ul style="list-style-type: none"> ▪ Masonry min. 175 mm ▪ Concrete min. 140 mm ▪ Lightweight construction stud wall *min. 95 mm ▪ Aerated concrete (up to max. 1500 x 3000 mm) <ul style="list-style-type: none"> - aerated concrete stones min. 175 mm - reinforced aerated concrete min. 175 mm ▪ Concealed steel supports F 90 <p>* Assembly- /assembly fire walls F 90 acc. DIN 4102 part 4 or general building authority test certificate (up to max. 1500 x 3000 mm). Approved wall types see register "installation details"</p>
Approved dimensions	Modular dimension: Width: 625 - 1500 mm Height: 1750 - 3000 (3500) mm () dimensions = Door leaf thickness 64 mm
Type of handling	DIN right or DIN left
Door leaf double skinned	Rebate type: 3-sided rebated thick rebate Door leaf thickness: 62/64 mm Sheet thickness: 1.0 mm or 1.5 mm Security bolt: min. 2
Frame	Corner frame 2.0/(3.0) mm thick with 3-sided circumferential seal, without floor recess. Fastening by exposed masonry mounting. Special equipment: <ul style="list-style-type: none"> ▪ Block frame and counter- or closed frame ▪ Frame with floor recess
Heat insulation	Thermal transmittance acc. EN ISO 12567-1 (without glazing) sheet thickness 1.0 mm: $U_D = 1.4 \text{ W/m}^2\text{K}$ sheet thickness 1.5 mm: $U_D = 1.5 \text{ W/m}^2\text{K}$ in conjunction with bottom floor closure
Floor closures	<ul style="list-style-type: none"> ▪ Retractable bottom seal ▪ Sliding threshold seal ▪ Buffer strip with seal <ul style="list-style-type: none"> - Bottom seal retrofittable
Surface	Door leaf/Frame galvanised and prime coated, grey white similar RAL 9002 Special equipment: <ul style="list-style-type: none"> ▪ RAL of choice
Hinges and closing devices	<ul style="list-style-type: none"> ▪ 2 CO hinges with ball bearing ▪ 1 Top door closer DIN EN 1154
Fittings	<ul style="list-style-type: none"> ▪ Mortise lock with latch function PC-perforated acc. DIN 18250 ▪ FP round handle set, black (plastic). ▪ Handle pivoted on bearing with tumbler (Bb) insert and 1 Bb key

Also available in **STAINLESS STEEL!**

Glazing	Fire resistant glass clear F1-90, rectangular glazing, max. pane size 1000 x 2263 mm and round glazing (Ø 300,400 and 500 mm) with aluminium-glass holding strips galvanised and prime coated, grey white similar RAL 9002. Special equipment: <ul style="list-style-type: none"> ▪ Rectangular glazing - steel-glass holding strips with additional aluminium cover strips ▪ Rectangular-/round glazing - glass holding strips made of stainless steel
Special equipment	<ul style="list-style-type: none"> ▪ Handle sets / Lever/Knob sets:: <ul style="list-style-type: none"> - Plastic - Light metal - Stainless steel - with short plate or rose escutcheon (various makes) ▪ prepared for rose escutcheon ▪ Panic/bar handle ▪ Locks <ul style="list-style-type: none"> - Panic locks - Block lock (must be provided) ▪ Profil cylinder 45.5 + 35.5 mm ▪ Top door closer DIN EN 1154 <ul style="list-style-type: none"> - hinge-/opposite hinge side - with slide rail - with locking device - with smoke detector - ITS 96 (hidden) ▪ Electrical door opener ▪ Integrated lock inspector (bolt contact) ▪ Integrated opening indicator (reed contact) ▪ Revolving door drives ▪ Hold-open devices

	Ordering dim. / MD dim. width x height	Clear passage size (corner frame) width x height
Standard sizes	750 x 2000	666 x 1961
	2125	2086
	875 x 1875	791 x 1836
	2000	1961
	2125	2086
	1000 x 2000	916 x 1961
	2125	2086
	1125 x 2000	1041 x 1961
	2125	2086
	1250 x 2000	1166 x 1961
	2125	2086
	2250	2211

(Special sizes: 625 x 1750 to 1500 x 3500)

Further qualifications
(Special versions 62 mm door):



Smoke proof doors acc. DIN 18095 (up to width 1500 x height 3000 mm) for solid- and lightweight construction stud walls



Sound insulated acc. DIN EN 20140/717 part 1 up to width 1350 x height 2500 mm without glazing)
RW 42dB with retractable bottom seal
RW 42dB with buffer strip and seal

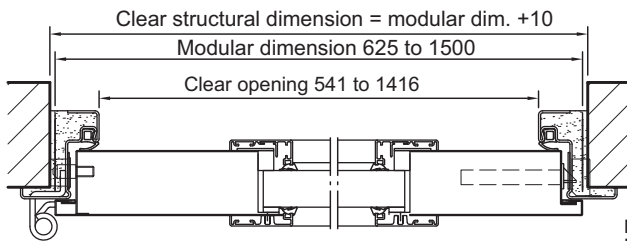
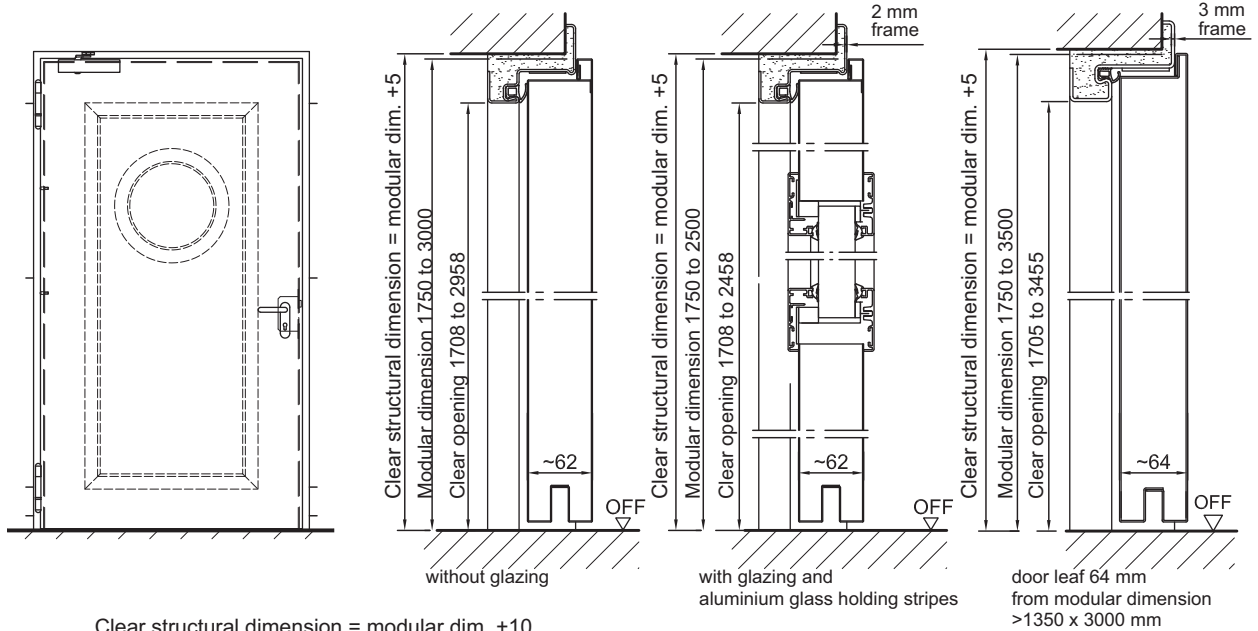


Burglar resistant acc. DIN EN of 1627 RC 2-3 (up to width 1500 x height 3000 mm)



Fire-resistant steel door T90-1-FSA „Teckentrup 62“

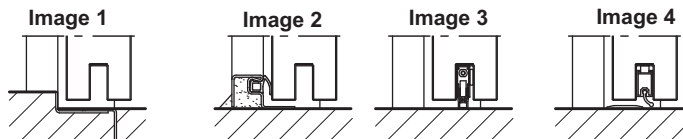
Door with thick rebate, optionally with glazing



DIN left shown;
DIN right laterally reversed

Floor connections:

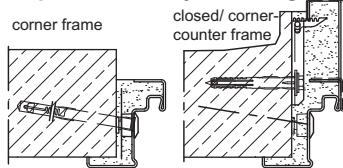
- Image 1: with bottom buffer
- Image 2: with bottom buffer/seal
- Image 3: with retractable bottom seal
- Image 4: with sliding threshold seal



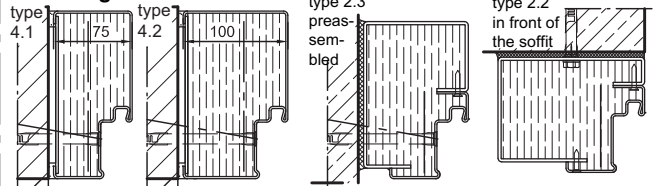
Installation in masonry/ concrete walls

concrete walls ≥ 140 mm
masonry walls ≥ 175 mm

Exposed masonry mounting



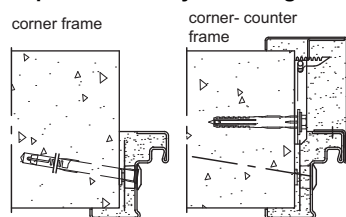
Flush edge installation



Installation in autoclaved aerated concrete walls

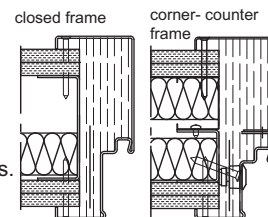
Made of auto. aerated concrete stones or reinforced auto. aerated concrete, wall thickness min. 175 mm

Exposed masonry mounting



Installation in assembly/ fire walls (F90)

in acc. with general building authority test certificate.
Approved wall types see register installation details.



Please find a detailed installation overview in the planning-, installation- and maintenance manual for 1-leaf and 2-leaf doors.