



Fire-resistant steel door T90-2-FSA „Teckentrup 62“

Door with thick rebate, optionally with glazing

Text example:

T 90-2-FSA Steel fire-protection door tested acc. DIN 4102. Double-leaf door element. Active leaf DIN right. Door leaf 62 mm thick, 3-sided rebated with thick rebate. Corner frame 2.0 mm thick, with 3-sided seal, without floor recess. Door leaf and frame galvanised and prime coated, grey white similar RAL 9002, active leaf, Mortise lock with latch function PC perforated acc. DIN 18250. FP round handle set black (plastic). Handle pivoted on bearing with tumbler insert and 1 Bb-key. Inactive leaf with centre rebate profile and espagnolett bolt lock. per leaf 2 construction hinges with ball bearing and 1 top door closer. 1 door selector.

„Teckentrup DF“ or equivalent.

(Compile and tender according to requirements. Please refer to technical data below for respective details. Updated 01.03.2021)

Technical data

Building authority approval	Z-6.20-2057 tested acc. DIN 4102 for installation in interior walls
Installation in	<ul style="list-style-type: none"> ▪ Masonry min. 175 mm ▪ Concrete min. 140 mm ▪ Lightweight construction stud wall * min. 100 mm <ul style="list-style-type: none"> - Autoclaved aerated concrete - stones min. 200 mm - reinforced type min. 200 mm <p>* Assembly walls/Assembly firewallsF90acc. DIN 4102 part 4 or. general building authority test certificate.</p>
Approved dimensions	Modular dimension W 1375 - 3000 (3250) mm H 1750 - 3000 (3500) mm () dimension = door leaf thickness 64 mm
Type of handling	DIN right or DIN left
Door leaf double skinned	Rebate type: 3-sided rebated thick rebate Door leaf thickness: 62/64 mm Sheet thickness: 1.0 mm or 1.5 mm Security bolt: per leaf min. 2
Frame	Corner frame 2.0/(3.0) mm thick with 3-sided seal, without floor recess and bottom floor bracket. Fastening by exposed masonry mounting. Special equipment: <ul style="list-style-type: none"> ▪ Block frame and counter- or closed frame (installation in lightweight construction stud walls/aerated concrete counter frame or closed frame required) ▪ Frame with floor recess
Heat insulation	Thermal transmittance acc. EN ISO 12567-1 (without glazing) sheet thickness 1.0 mm: $U_D = 1.5 \text{ W/m}^2\text{K}$ sheet thickness 1.5 mm: $U_D = 1.6 \text{ W/m}^2\text{K}$ in conjunction with bottom floor closure
Floor closures	<ul style="list-style-type: none"> ▪ Retractable bottom seal ▪ Buffer strip with seal ▪ Sliding threshold ▪ Retrofittable bottom seal.
Surface	Door leaf/frame galvanised and prime coated, grey white similar RAL 9002 Special equipment: RAL of choice
Hinges and closing devices	<ul style="list-style-type: none"> ▪ per leaf 2 CO hinges with ball bearing ▪ 2 top door closer DIN EN 1154 ▪ 1 door selector
Hinges	Active leaf: <ul style="list-style-type: none"> ▪ Mortise lock with latch functiong PC-perforated acc. DIN 18250 ▪ FP-round handle set black (plastic). Handle pivoted on bearing with tumbler insert and 1 Bb-key Inactive leaf: Espagnolette bolt with standard top locking

Also available in **STAINLESS STEEL !**

Glazing	Fire-resistant glass F90, rectangular glazing, max. pane size dim. 740 x 2005 mm and round glazing (Ø 300,400 and 500 mm) with steel glass holding strips galvanised and prime coated, grey white similar RAL 9002. Special equipment: <ul style="list-style-type: none"> ▪ Rectangular glazing - steel-glass holding strips with additional aluminium cover strips / ▪ Rectangular-/round glazing - glass holding strips made of stainless steel
Special equipment	<ul style="list-style-type: none"> ▪ Handle sets / Lever/Knob sets: <ul style="list-style-type: none"> - Plastic - light metal - stainless steel - with short plate or rose escutcheon (various makes) ▪ Prepared for rose escutcheon ▪ Panic- / bar handle ▪ Locks <ul style="list-style-type: none"> - Panic locks - Block lock (must be provided) ▪ Profil cylinder 45.5 + 35.5 mm ▪ Top door closer DIN EN 1154 <ul style="list-style-type: none"> - Hinge-/opposite hinge side - with slide rail - with locking device - with smoke detector - ITS 96 (hidden) - with integrated door selector ▪ Electrical door opener ▪ Integrated lock inspector (bolt contact) ▪ Integrated opening indicator (reed contact) ▪ Revolving door drives ▪ Hold open devices

	Ordering dim. / modular dim. width x height	Clear passage size (corner frame) width x height
Standard sizes	1500 x 2000	1416 x 1961
	2125	2086
	1750 x 2000	1666 x 1961
	2125	2086
	2000 x 2000	1916 x 1961
	2125	2086
	2500	2461
	2125 x 2125	2041 x 2086
2250 x 2250	2166 x 2211	
2500 x 2500	2416 x 2461	

(Special sizes: from 1375 x 1750 to 3250 x 3500)

Further qualifications
(special versions):



Smoke proof acc. DIN 18095 (to width 3000 x height 3000 mm) for solid- and lightweight construction stud walls

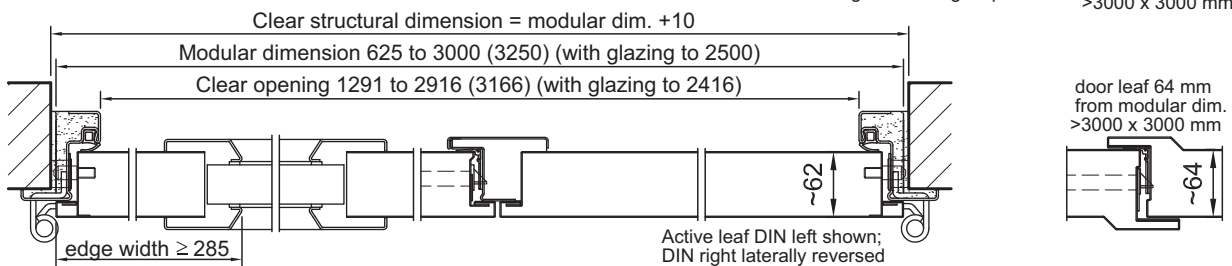
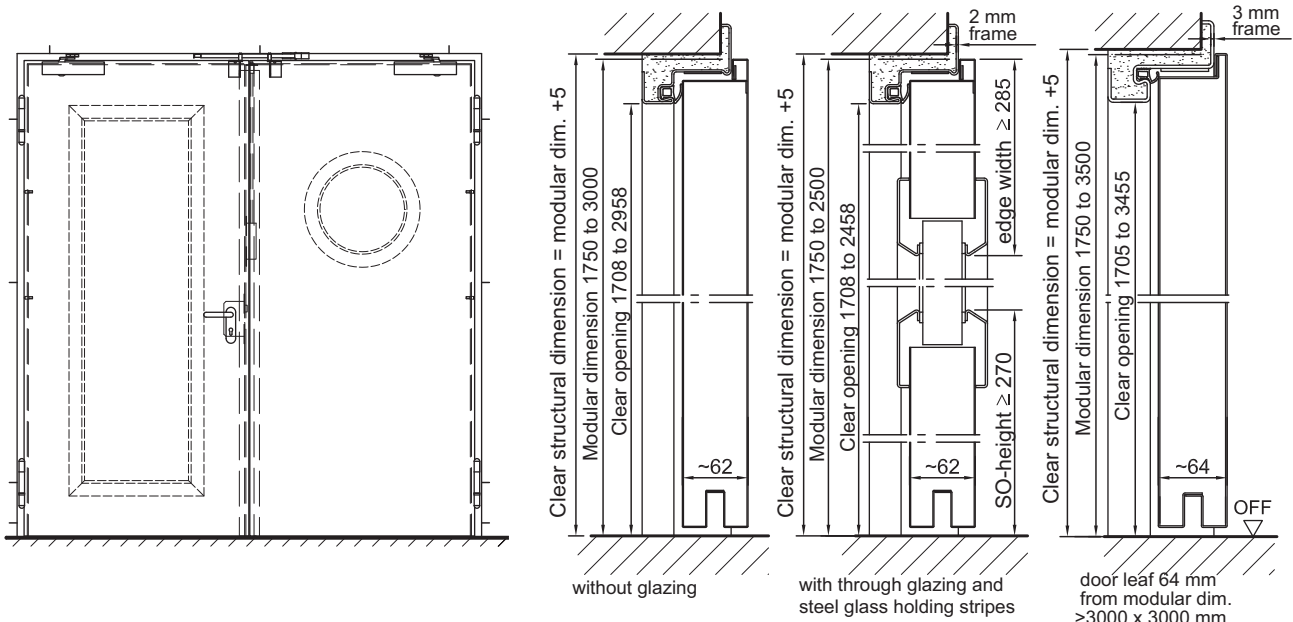


Sound insulated acc. DIN EN 20140/717 part 1 (to width 3000 x height 3000 mm without glazing)
RW 40dB with buffer strip and seal
RW 42dB with retractable bottom seal



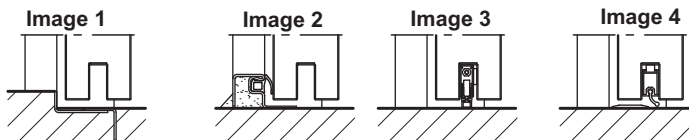
Fire-resistant steel door T90-2-FSA „Teckentrup 62“

Door with thick rebate, optionally with glazing



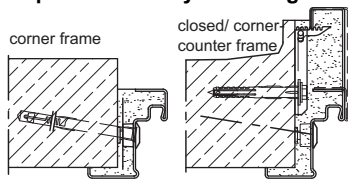
Floor connections:

- Image 1: with bottom buffer
- Image 2: with bottom buffer/seal
- Image 3: with retractable bottom seal
- Image 4: with sliding threshold seal

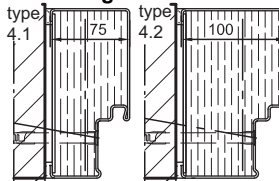


Installation in masonry/ concrete walls
concrete walls ≥ 140 mm
masonry walls ≥ 175 mm
(masonry walls ≥ 240 mm for MD > 3000 x 3000 mm)

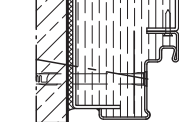
Exposed masonry mounting



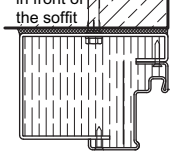
Flush edge installation



type 2.3 preassembled.

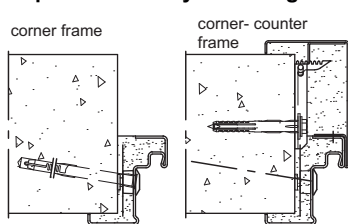


type 2.2 in front of the soffit



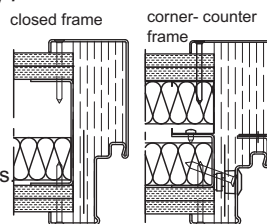
Installation in autoclaved aerated concrete walls
Made of auto. aerated concrete stones or reinforced auto. aerated concrete, wall thickness min. 200 mm

Exposed masonry mounting



Installation in assembly-/ fire walls (F90)

in acc. with general building authority test certificate. Approved wall types see register installation details



Please find a detailed installation overview in the planning-, installation- and maintenance manual for 1-leaf and 2-leaf doors.