



# TECKENTRUP 62 SWING SECURE.

The secure & stylish swing garage door for your home.



Teckentrup 62 Swing Secure  
is Secured by Design  
as standard

**Secured by Design**



Police Preferred Specification



Tested to  
LPS 1175 Issue 8  
A1 (SR1)

# STYLISH, SECURE A CLASSIC, UPDATED

The warranty periods below only apply to products that have been correctly installed as per the instructions, maintained by a Garage Door Specialist and operated and cleaned in accordance with the requirements set out in the operating and maintenance sections of instructions and labels.

## 2-year manufacturer's guarantee

- on mechanical defects, material and manufacturing flaws of all non-moving parts of the frame that are verifiably unusable or whose usability is substantially compromised

## 10-year manufacturer's guarantee

- on panels against rust penetration from inside to outside
- on floor seal and frame seals against rotting

The guarantee does not apply to doors that are subjected to extreme conditions, e.g. corrosive influences resulting from use in a coastal climate with high salt content.

Terms and conditions apply, visit [www.teckentrup.co.uk](http://www.teckentrup.co.uk) for details.

**2YR**  
**10YR**

2 Year 10 Year Guarantee

### TECKENTRUP 62-1 SWING SECURE

Single leaf versions for side access to your garage.

### TECKENTRUP 62-2 SWING SECURE GARAGE DOOR

Double leaf versions provide easy access and solid performance.





Our doors are independently tested and certified to EN 14351 and all current safety legislation and carry a CE mark.

#### A NEW AND SECURE LOOK FOR GARAGES

The Teckentrup 62 Swing Secure brings crisp aesthetics and solid performance; Thermal Transmittance, Resistance to Windload, Watertightness, Air Permeability and Operating Forces are all certified in these high performance doors.

Add to this, certified security to the Secured by Design Police Preferred Specification as standard, tested to LPS 1175 Issue 8 A1 (SR1) and Teckentrup 62 Swing Secure garage doors are a classic, updated for today's homes. The superb build quality of the double leaf doors is complemented by matching single leaf doors for side or rear access to your garage space.



Tested to LPS 1175  
Issue 8 A1 (SR1)



**TECKENTRUP**  
DOOR SOLUTIONS

# Style Your Door



Stainless Steel Lever Handle



## HANDLES

A stainless steel lever handle and security keyed cylinder is the standard configuration for all doors.

Stainless steel pull handles in two lengths can also be added in singles or pairs to add a striking contemporary look to your door.



1200mm 'D' Handle



1200mm 'D' Handle Pair



1500mm 'D' Handle

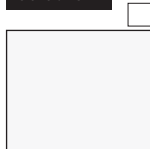


1500mm 'D' Handle Pair





## Colours



White  
RAL 9016



Anthracite Grey  
RAL 7016



Jet Black  
RAL 9005



Doors can also  
be coloured to  
any RAL shade.

## Hinges

3D Stainless  
steel hinges  
are supplied  
as standard on  
every door.



## Security

Certified security to The Secured  
by Design Police Preferred  
Specification as standard.



Tested to LPS 1175 Issue 8 A1 (SR1)

## A note about colour

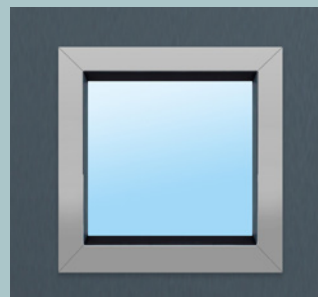
RAL references for colours are provided as a guide only to the nearest similar  
RAL colour. Colours will not match to other RAL finishes due to different coating  
processes, gloss levels, substrates and textures. Similarly, special RAL, BS or  
other colours will not be a precise match.

Colours shown are limited in accuracy by the printing process - samples should  
always be requested.

## High Grade Window Options

All window units are laminated glass and  
available with clear glazing for vision or satin  
glazing to allow light in with privacy.

Doors with windows are supplied with a lock  
cylinder that can only be operated by key from  
outside and inside to maintain security. Should  
a glazing element be breached in an attempt to  
enter, the door cannot be opened (an internal  
thumb turn is not available).



Glazing sizes:  
230mm x 1360mm  
300mm x 300mm

Windows are supplied with Anodised Aluminium  
surrounds with concealed fixings.

## Glazing Styles



Clear



Satin



Square 300 S



Square 300 SP



Square 300 S2



TALL 1360 V1



Square 300 S2P



Square 300 S3



Square 300 S3P



TALL 1360 V2

# HIGH QUALITY BUILT TO LAST

## U VALUE 1.4 Wm<sup>2</sup>K\*

The U value of the door confirms its insulation capability. The value is for a complete door with frame and is exceptionally low (which is good!).

\*U value includes a 3mm clearance gap under the door and does not apply to doors with windows.

### What Performance Can I Expect?

As part of the CE marking process, each product must have its performance provided for a defined set of characteristics to allow fair comparison between products from different manufacturers. Other characteristics can also be included, if relevant to a door's performance. The following table shows the impressive performance characteristics of Teckentrup 62 Swing Secure side hinged garage doors.

### Automatic Quality

Every Teckentrup 62 Swing Secure is made to order in our automated production facility that operates to quality procedures audited to BS EN ISO 9001: 2008. We care about the environment too - this is why all of our products are certified in accordance with the Environmental Product Declaration (EPD).



### PERFORMANCE CHARACTERISTIC

### RATING

Resistance to Windload EN 12424	Class 2
Watertightness EN 12425	Class 2
Air Permeability EN 12426	Class 2
Thermal Transmittance EN 13241	1.4 W/m <sup>2</sup> k
Operating Forces (hand Operated) EN 12604	150 N
Operating Cycles EN 1191	C5
Burglar Resistance LPS 1175 Issue 8	A1 (SR1)



Tested to  
LPS 1175 Issue 8  
A1 (SR1)

## Security



Doors are independently certified for security to the Secured by Design Police Preferred Standard, tested to LPS 1175 Issue 8 A1 (SR1).



Each door is supplied with a pair of Security keys. Security keys add extra security by preventing unauthorised copying. They cannot be cut by anyone other than the issuer of the key - Teckentrup.



The inactive leaf is secured with flush bolts to the top and bottom of the leaf.

## Hold Open Stays



These spring dampened stays hold double doors in the open position. A simple push out to de-latch motion releases the door leaf.

**Please note - stays are not designed for high wind applications.**



Double doors are available with optional foot activated stays with a maximum throw of 55mm.

**Please note - not designed for high wind applications.**

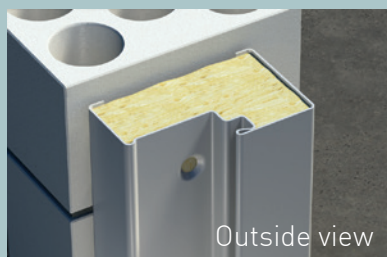
## Threshold



For improved weather protection, a stepped aluminum threshold with a bulb weather strip is provided. The door leaves close against the raised weather strip creating an improved barrier to dust and debris. The threshold is DDA compliant for wheelchair access.

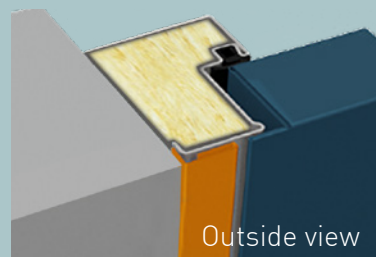
## Frames

Every door is supplied with a frame. A 'block frame' is the standard option. Each frame is made from heavy gauge corrosion protected steel and provides a stable platform for the door to operate.



### Block Frame

The block frame is the standard frame design. Provided with Rockwool filling.



### FB Profile Option

FB Frame Option allows for a flush finish between door lip, frame and wall finish.

Teckentrup is a family business with operations throughout the world. In the UK we make our garage doors in Warrington, Cheshire. CarTeck Automatic is available through a national network of independent Garage Door Specialist installers.

Teckentrup offers more than garage doors: We provide solutions and have set three quality standards for our garage doors:

# Design. Security. Service.



March 2022

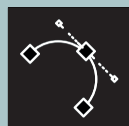
Teckentrup UK Limited, Units 2-4 Opus 9 Industrial Estate,  
Woburn Road, Winwick Quay, Warrington WA2 8UE

t: 01925 924 050

f: 08701 314 843

e: [sales@teckentrup.co.uk](mailto:sales@teckentrup.co.uk)

**TECKENTRUP**  
DOOR SOLUTIONS



## Design

**We combine ease of use with aesthetics.**

Good design uses innovative technology to make using a product intuitive and effortless. CarTeck Automatic sectional garage doors offer a wide range of design options that will transform the look of your home and the way you use your garage space.



## Safety & Security

**We combine security with safety.**

Our products are designed to provide peace of mind with both physical security and the knowledge that durability and safe operation are inherent.



## Service

**We combine speed with reliability.**

The Teckentrup team and our network of Garage Door Specialists installers love to make your new door a pleasure to own. From planning to installation. You'll always receive expert advice and the best service for installation, maintenance and aftercare.

## Quality & Environment

Teckentrup operates to quality procedures audited to ISO 9001. We care about the environment too - this is why our products are certified in accordance with the Environmental Product Declaration (EPD).

ISO 14001 Environmental Management

ISO 50001 Energy Management



Raising Standards  
Safety Assured

Member



CONTRACTORS HEALTH & SAFETY ASSESSMENT SCHEME  
Accredited Contractor  
[www.chas.co.uk](http://www.chas.co.uk)



NBS Plus



riba  
product  
selector



LPCB  
Red Book  
LPCB

[WWW.TECKENTRUP.CO.UK](http://WWW.TECKENTRUP.CO.UK)