



# Fire-Resistant Steel Door

## EI<sub>2</sub>30-C5-S<sub>a</sub> „Teckentrup 62“ 2lvs. Outside door

Fire-resistant as outside door - classification with CE-labelling (acc. to 16034 / 14351-1)

### Text example:

EI<sub>2</sub>30-C5-S<sub>a</sub>, classification fire-resistant closure as outside door with CE-labelling (acc. EN 16034 / 14351-1). Double-leaf door element. Type of handling DIN right. Flush door leaf with thin rebate, 62 mm thick, rebated on 3 sides. Corner frame 1,5 mm thick with 3-sided seal, without floor recess. Door leaf and frame galvanized and prime coated similar to RAL 9002 (Grey white). orifice lock with latch lever in accordance with DIN 18250, prepared for profile cylinder. Black plastic round handle set. Handle pivoted on bearing, with tumbler insert (Bb) and 1 Bb key. Inactive leaf with espagnolette bolt lock with standard top locking. Per leaf 2 CO hinges with ball bearing and 1 top door closer in acc. to EN 1154.1 Door selector. „Teckentrup 62“ or equivalent.

(Compile and tender according to requirements. Please refer to technical data below for respective details. Updated 01.11.2019)

### Technical data

<b>Classification</b>	<b>EI<sub>2</sub>30-C5-S<sub>a</sub></b> Classification fire-resistant closure as outside door with CE-labelling (acc. EN 16034 / 14351-1)	
<b>Resistance to water penetration</b>	Depends on the desired floor closure Class 6A (thin rebate)	
<b>Heat insulation acc. EN ISO 10077-1</b> (without glazing)	Sheet-thickness	1,0 mm thin rebate: U <sub>D</sub> = 1,4 W/m <sup>2</sup> K 1,5 mm thin rebate: U <sub>D</sub> = 1,5 W/m <sup>2</sup> K 1,0 mm thick rebate: U <sub>D</sub> = 1,2 W/m <sup>2</sup> K 1,5 mm thick rebate: U <sub>D</sub> = 1,4 W/m <sup>2</sup> K
<b>Wind load resistance EN 12210</b>	Depends on the desired floor closure Class 2 (thin rebate)	
<b>Installation in</b>	<ul style="list-style-type: none"> <li>Masonry wall min. 115 mm</li> <li>Concrete wall min. 100 mm</li> <li>Aerated concrete                             <ul style="list-style-type: none"> <li>- Autoclaved aerated concrete min. 115 mm</li> <li>- Reinforced AAC walls min. 115 mm</li> </ul> </li> </ul>	
<b>Approved dimensions</b> (thin rebate)	Modular dimension	W 1375 – 3000 mm H 1750 – 4000 mm
	with top casing up to	H 4250 mm
<b>Approved dimensions</b> (thick rebate)	Modular dimension	W 1375 – 3000 mm H 1750 – 3500 mm
	with top light/ top casing up to	H 3750 mm
<b>Type of handling</b>	DIN right or DIN left	
<b>Door leaf</b>	Double skinned, Door : Thick rebate door: Sheet thickness: Security bolt:	<b>thin rebate, thick rebate</b> 3-sided rebated 62 mm 1,0 mm or 1,5 mm per leaf min. 1
<b>Frame</b>	<ul style="list-style-type: none"> <li>Corner frame 1,5/2,0 mm thick</li> <li>Door 3-sided with seal</li> <li>Door without floor recess fitted</li> <li>Fastening by exposed masonry mounting</li> </ul> Special equipment: <ul style="list-style-type: none"> <li>Block-, counter- or closed frame</li> <li>Frame with floor recess fitted</li> </ul>	
<b>Floor closure</b>	<ul style="list-style-type: none"> <li>Retractable bottom seal</li> <li>Sliding threshold</li> <li>Buffer strip and seal</li> </ul> Floor seal retrofittable.	
<b>Surface</b>	Door leaf/Frame galvanized and prime coated, similar to RAL 9002 (Grey white) Special equipment: RAL of choice	
<b>Fittings</b>	Active leaf: <ul style="list-style-type: none"> <li>Mortise Lock prepared for profile cylinder</li> <li>FP round handle set (plastic). Handle pivoted on bearing, with tumbler (Bb) insert and 1 Bb key</li> </ul> Inactive leaf: <ul style="list-style-type: none"> <li>Espagnolette bolt lock with standard top and bottom locking</li> </ul>	
<b>Hinges and closing devices</b>	<ul style="list-style-type: none"> <li>Per leaf 2 CO hinges with ball bearings and 2 top door closer</li> <li>1 door selector</li> <li>Compensation rings for height adjustment</li> </ul>	

Also available in **STAINLESS STEEL!**

<b>Glazing</b>	Fire resistant glass, clear F30 type 2-0, glazing area angled with aluminium glass holding strips. Max. pane size 904 x 2150 mm. Round glazing (Ø 300, 400 und 500) with steel glass holding strips galvanized and prime-coated, grey-white similar to RAL 9002. Special equipment: <ul style="list-style-type: none"> <li>Rectangular glazing, aluminium glass holding strips in stainless steel design / rectangular/ round glazing stainless steel glass holding strips</li> </ul>	
<b>Required for doors für outside use:</b>	<ul style="list-style-type: none"> <li>Floor closure</li> <li>Rain guard top (necessary if no roof/canopy existing)</li> <li>Weather board at the bottom (recommended)</li> </ul>	
<b>Special equipment</b>	<ul style="list-style-type: none"> <li>Handle sets/lever/knob sets:                             <ul style="list-style-type: none"> <li>- Plastic</li> <li>- Light metal</li> <li>- Stainless steel</li> <li>- With short plate or rose escutcheon (various makes)</li> </ul> </li> <li>Prepared for rose escutcheon</li> <li>Panic bar</li> <li>Locks                             <ul style="list-style-type: none"> <li>- Panic locks</li> <li>- Block lock (must be provided)</li> </ul> </li> <li>Profile cylinder 40,5 + 40,5 mm (thin rebate)</li> <li>Profile cylinder 45,5 + 35,5 mm (thick rebate)</li> <li>Top door closer                             <ul style="list-style-type: none"> <li>- hinge/opposite hinge side</li> <li>- with slide rail</li> </ul> </li> <li>Electric door opener</li> <li>Integrated lock inspector (bolt contact)</li> <li>Integrated opening indicator (reed contact)</li> </ul>	

	<b>Ordering dimensions / modular dimensions</b> width x height	<b>Clear passage sizes</b> (corner frame) width x height
<b>Standard sizes</b>	1500 x 2000	1416 x 1958
	2125	2083
steel door	1750 x 2000	1666 x 1958
	2125	2083
	2000 x 2000	1916 x 1958
	2125	2083
	2500	2458
	2125 x 2125	2041 x 2083
	2250 x 2250	2166 x 2208
	2500 x 2500	2416 x 2458

(Special sizes: from 1375 x 1750 to 3000 x 4000)

**Further qualifications** (Special equipment):



**Smoke proof** in accordance with EN 1634-3 with top door closer, for solid walls



**Sound insulated in accordance with** EN 20140/717 Teil 1  
up to **RW 42 dB** (thin rebate)  
up to **RW 42 dB** (thick rebate)  
depending on door structure and bottom seal



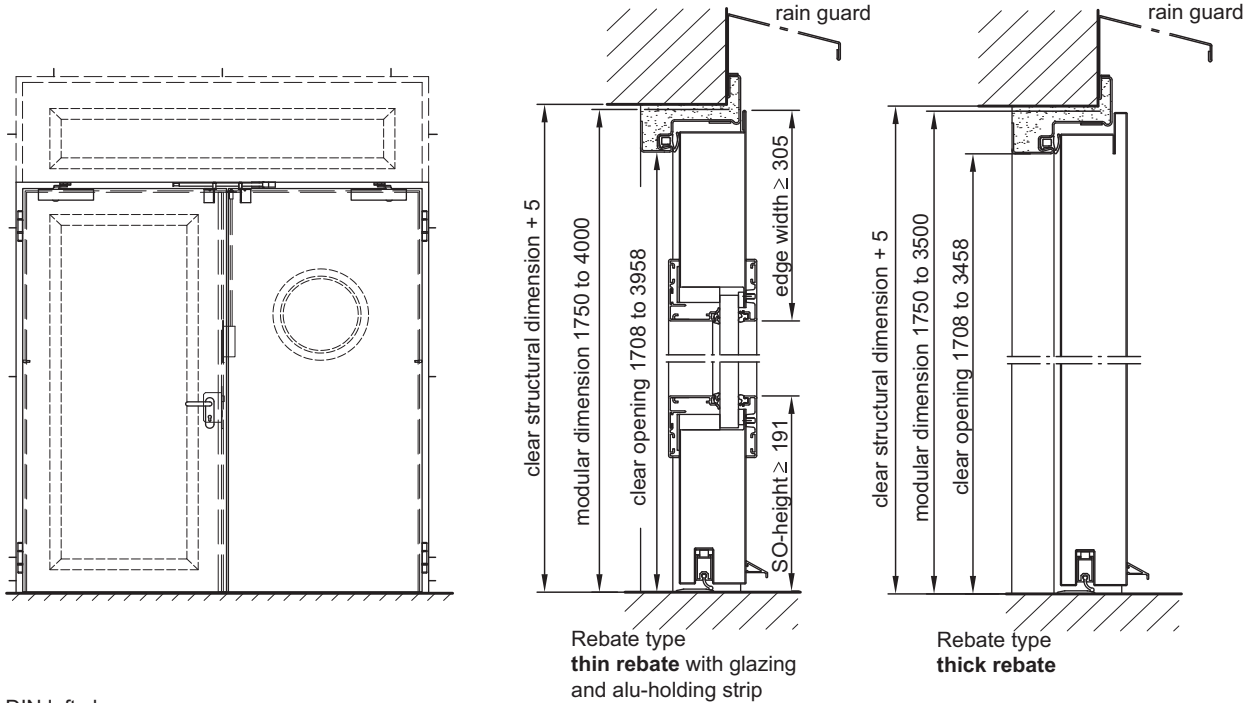
**Burglar resistant** in acc. with 1627 - **RC 2, RC 3, RC 4** (thin rebate)  
**RC 2, RC 3** (thick rebate)



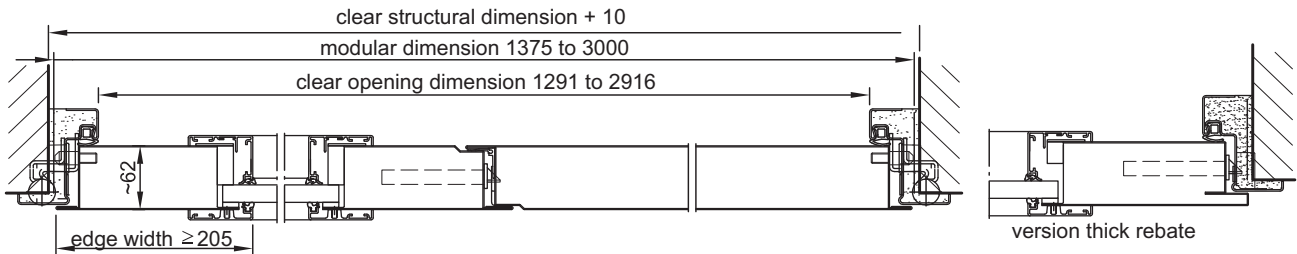
# Fire-Resistant Steel Door

## EI<sub>2</sub>30-C5-S<sub>a</sub> „Teckentrup 62“ 2lvs. Outside door

Fire-resistant as outside door - classification with CE-labelling (acc. to 16034 / 14351-1)

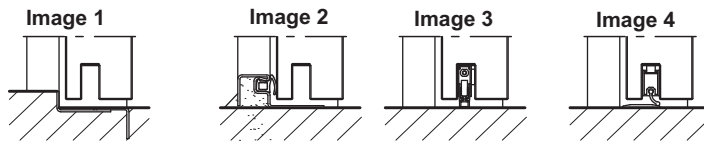


DIN left shown;  
DIN right laterally reversed



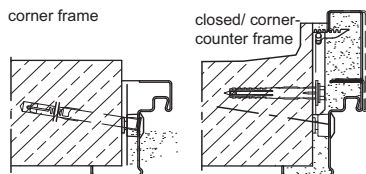
**Floor connections:**

- Image 1: with bottom buffer
- Image 2: with bottom buffer/seal
- Image 3: with retractable bottom seal (smoke-proof door with top door closer)
- Image 4: with sliding threshold seal

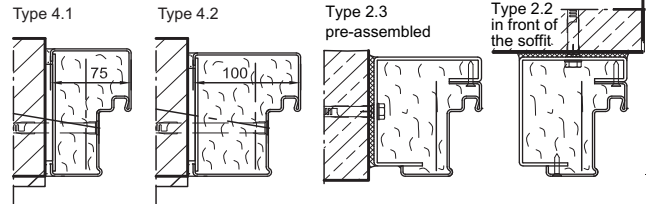


**Installation in masonry/ concrete walls**  
concrete walls ≥ 100 mm  
masonry walls ≥ 115 mm

**Exposed masonry mounting**



**Flush edge installation**



**Installation in autoclaved aerated concrete walls**  
(doors with top door closer)  
Made of auto. aerated concrete blocks or reinforced auto. aerated concrete  
thickness min. 115 mm

**Exposed masonry mounting**

