



# Fire-Resistant Steel Trap / Steel Door

## EI<sub>2</sub>30-C5-S<sub>a</sub> „Teckentrup 62“ 1lf. Outside door

Fire-resistant as outside door - classification with CE-labelling (acc. to EN 16034 / 14351-1)

### Text example:

EI<sub>2</sub>30-C5-S<sub>a</sub> classification fire-resistant closure as outside door with CE-labelling (acc. EN 16034 / 14351-1). Single leaf door element. Type of handling DIN right. Flush door leaf with thin rebate, 62 mm thick, rebated on 3 sides. Corner frame 1,5 mm thick with 3-sided seal, without floor recess. Door leaf and frame galvanized and prime coated similar to RAL 9002 (Grey white). Mortice lock with latch lever in accordance with DIN 18250, prepared for profile cylinder. Black plastic round handle set. Handle pivoted on bearing, with tumbler insert (Bb) and 1 Bb key. 1 security bolt. 1 spring hinge and 1KO hinge with ball bearings. „Teckentrup 62“ or equivalent.

(Compile and tender according to requirements. Please refer to technical data below for respective details. Updated 01.11.2019)

### Technical data

<b>Classification</b>	EI <sub>2</sub> 30-C5-S <sub>a</sub> classification fire-resistant closure as outside door with CE-labelling (acc. EN 16034 / 14351-1)	
<b>Resistance to water penetration</b>	Depends on the desired floor closure Class 5A (thin rebate)	
<b>Heat insulation acc. EN ISO 10077-1</b> (without glazing)	Sheet thickness	1.0 mm thin rebate: U <sub>D</sub> = 1,3 W/m <sup>2</sup> K 1.5 mm thin rebate: U <sub>D</sub> = 1,4 W/m <sup>2</sup> K 1.0 mm thick rebate: U <sub>D</sub> = 1,1 W/m <sup>2</sup> K 1.5 mm thick rebate: U <sub>D</sub> = 1,3 W/m <sup>2</sup> K
<b>Wind load resistance EN 12210</b>	Depends on the desired floor closure Class C3 - Class C5 (thin rebate) Class C2 (thick rebate)	
<b>Air permeability</b>	Depends on the desired floor closure Class 3 - Class 4 (thin rebate)	
<b>Installation in</b>	<ul style="list-style-type: none"> <li>Masonry wall min. 115 mm</li> <li>Concrete wall min. 100 mm</li> <li>Aerated concrete</li> <li>- Autoclaved aerated concrete min. 115 mm</li> <li>- Reinforced AAC walls min. 115 mm</li> </ul>	
<b>Approved dimensions (thin rebate)</b>	Modular dimension with top light/ top casing up to	W 500 - 1500 mm H 500 - 4000 mm H 4250 mm
<b>Approved dimensions (thick rebate)</b>	Modular dimension with top light/ top casing up to	W 500 - 1500 mm H 500 - 3500 mm H 3750 mm
<b>Type of handling</b>	DIN right or DIN left	
<b>Door leaf</b>	Double skinned, Trap: Door : Thick rebate door: Sheet thickness: Security bolt:	<b>thin rebate, thick rebate</b> 4-sided rebated 3-sided rebated 62 mm 1.0 mm or 1.5 mm min. - / 1
<b>Frame</b>	<ul style="list-style-type: none"> <li>Corner frame 1,5/2,0 mm thick, trap door 4-sided</li> <li>Door 3-sided with seal</li> <li>Door without floor recess fitted</li> <li>Fastening by exposed masonry mounting</li> <li>Special equipment:                             <ul style="list-style-type: none"> <li>Block-, counter- or closed frame</li> <li>Frame with floor recess fitted</li> </ul> </li> </ul>	
<b>Floor closure</b>	<ul style="list-style-type: none"> <li>Retractable bottom seal</li> <li>Sliding threshold</li> <li>Buffer strip and seal</li> <li>Floor seal retrofittable.</li> </ul>	
<b>Surface</b>	Door leaf/Frame galvanized and prime coated, similar to RAL 9002 (Grey white). Special equipment: RAL of choice	
<b>Hinges and closing devices</b>	<ul style="list-style-type: none"> <li>1 spring hinge and 1 CO hinge or</li> <li>2 CO hinges and 1 top door closer</li> <li>Compensation rings for height adjustment</li> </ul>	
<b>Fittings</b>	<ul style="list-style-type: none"> <li>Mortise Lock prepared for profile cylinder</li> <li>Black plastic handle set, handle pivoted on bearing with tumbler insert.(Bb) and 1 Bb-key.</li> </ul>	

Also available in **STAINLESS STEEL!**

<b>Glazing</b>	Fire resistant glass, clear F30 type 2-0, glazing area angled with aluminium glass holding strips. Max. pane size 904 x 2150 mm. Round glazing (Ø 300, 400 und 500) with steel glass holding strips galvanized and prime-coated, grey-white similar to RAL 9002. Special equipment: <ul style="list-style-type: none"> <li>Rectangular glazing, aluminium glass holding strips in stainless steel design / rectangular/ round glazing stainless steel glass holding strips</li> </ul>	
<b>Required for doors für outside use:</b>	<ul style="list-style-type: none"> <li>Floor closure</li> <li>Rain guard top (necessary if no roof/canopy existing)</li> <li>Weather board at the bottom (recommended)</li> </ul>	
<b>Special equipment</b>	<ul style="list-style-type: none"> <li>Handle sets/lever/knob sets:                             <ul style="list-style-type: none"> <li>Plastic</li> <li>Light metal</li> <li>Stainless steel</li> <li>With short plate or rose escutcheon (various makes)</li> </ul> </li> <li>Prepared for rose escutcheon</li> <li>Panic bar</li> <li>Locks                             <ul style="list-style-type: none"> <li>Panic locks</li> <li>Block lock (must be provided)</li> </ul> </li> <li>Profile cylinder 40,5 + 40,5 mm (thin rebate)</li> <li>Profile cylinder 45,5 + 35,5 mm (thick rebate)</li> <li>Top door closer                             <ul style="list-style-type: none"> <li>hinge/opposite hinge side</li> </ul> </li> <li>with slide rail</li> <li>Electric door opener</li> <li>Integrated lock inspector (bolt contact)</li> <li>Integrated opening indicator (reed contact)</li> </ul>	
	<b>Ordering dimensions/ modular dimensions</b> width x height	<b>Clear passage sizes</b> (corner frame) width x height
<b>Standard sizes steel door</b>	875 x 2000 2125	791 x 1958 2083
	1000 x 2000 2125	916 x 1958 2083
	1125 x 2000 2125	1041 x 1958 2083
	1250 x 2000 2125 2250	1166 x 1958 2083 2208

(Special sizes: from 500 x 1750 to 1500 x 4000)

Further qualifications (Special equipment):



Smoke proof in accordance with EN 1634-3 with top door closer, for solid walls



Sound insulated in accordance with EN 20140/717 part 1 up to RW 44 dB (thin rebate) up to RW 42 dB (thick rebate) depending on door structure and bottom seal

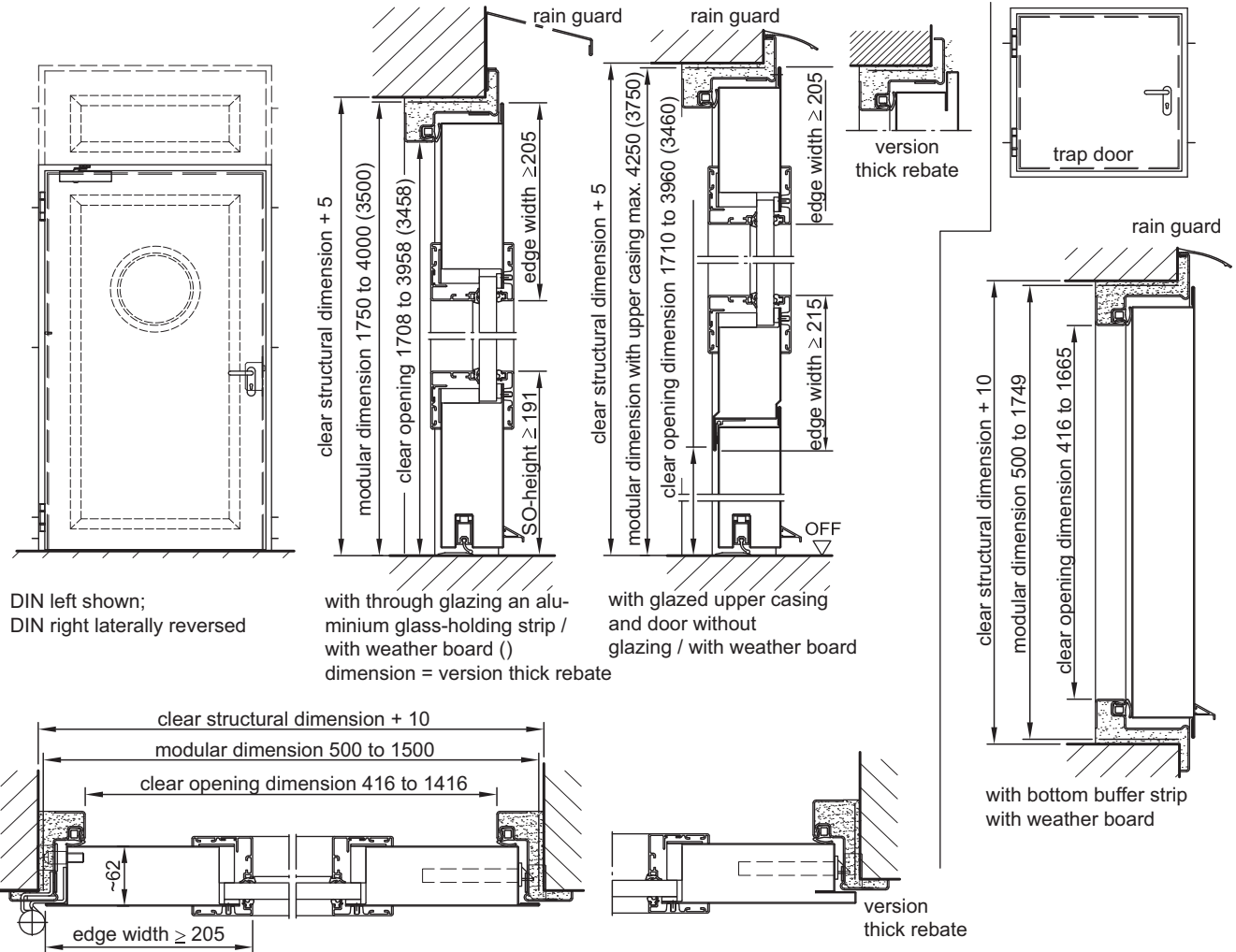


Burglar resistant in acc.with EN 1627 - RC 2, RC 3, RC 4 (thin rebate) RC 2, RC 3 (thick rebate)



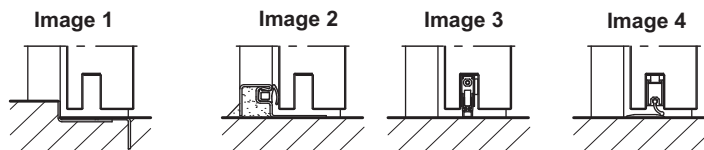
# Fire-Resistant Steel Trap / Steel Door EI<sub>2</sub>30-C5-S<sub>a</sub> „Teckentrup 62“ 1lf. Outside door

Fire-resistant as outside door - classification with CE-labelling (acc. to EN 16034 / 14351-1)



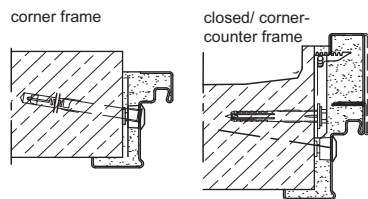
**Floor connections:**

- Image 1: with bottom buffer
- Image 2: with bottom buffer/seal
- Image 3: with retractable bottom seal (smoke-proof door with top door closer)
- Image 4: with sliding threshold seal

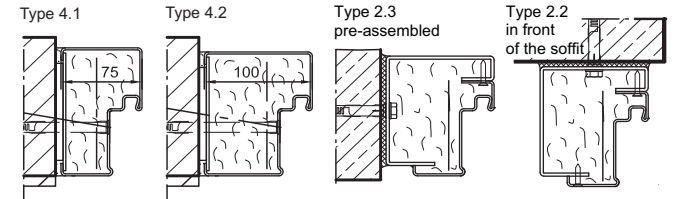


**Installation in masonry/ concrete walls**  
concrete walls  $\geq 100$  mm  
masonry walls  $\geq 115$  mm

**Exposed masonry mounting**



**Flush edge installation**



**Installation in autoclaved aerated concrete walls**  
(doors with top door closer)  
Made of auto. aerated concrete blocks or reinforced auto. aerated concrete thickness min. 115 mm

**Exposed masonry mounting**

