



## Cellar security door HT 8 „Teckentrup“ WK 2

Door with **thin rebate**, left/right usable, with T30 approval

### Text example:

Cellar-security door „Teckentrup“, tested acc. DIN ENV 1627-WK 2. Single leaf, left/ right usable door element. Door leaf 42 mm thick with thin rebate, 4-sided rebated with bottom buffer seal. Corner frame 2.0 mm thick with 4-sided seal. Door leaf and frame galvanised and prime-coated grey-white similar RAL 9002. 3-point -locking, PC-perforated. FP-aluminium-safety handle set, safety profile cylinder P2 with anti drilling and extraction protection BZ acc. DIN 18252. 3 keys and guarantee certificate. 1 construction hinge with ball bearing. 1 spring hinge with belt sleeve.

Cellar-security door „Teckentrup“ or equivalent.

(Compile and tender according to requirements. Please refer to technical data below for respective details. Updated 01.03.2021)

### Technical data

<b>Produkt</b>	Cellar-security door HT 8 „Teckentrup“ tested acc. DIN ENV 1627 <b>with T30-approval</b> Thermal transmittance acc. EN ISO 12567-1 = $U_d = 1,5 \text{ W/m}^2\text{K}$ Insulation values = 39 dB	
<b>Installation in</b>	<ul style="list-style-type: none"> <li>▪ Masonry min. 115 mm</li> <li>▪ Concrete min. 100 mm</li> <li>▪ Autoclaved aerated concrete                             <ul style="list-style-type: none"> <li>- for aerated concrete stones min. 150 mm</li> <li>- for reinforced type min. 150 mm</li> </ul> </li> </ul>	
<b>Dimensions</b>	Modular dimension	W 750 – 1125 mm H 875 – 2125 mm
<b>Type of handling</b>	DIN right or DIN left	
<b>Door leaf</b>	Double skinned, 4-sided rebated	<b>thin rebate</b> Thickness: 42 mm Sheet thickness: 1.0 mm Security bolt: min. 1
<b>Frame</b>	Corner frame 4-sided, 2.0 mm thick, with circumferential seal (sound insulated). The frame on the door is equipped so that the bottom stop can be removed. Fastening by exposed masonry mounting. Special equipment: ▪ Counter frame	
<b>Floor closures</b>	<ul style="list-style-type: none"> <li>▪ With buffer strip and seal (standard)</li> <li>▪ Double sliding threshold seal (specify type of handling)</li> </ul>	
<b>Surface</b>	Door leaf/frame galvanised and prime coated grey white similar RAL 9002. Special equipment: ▪ RAL of choice	
<b>Hinges and closing device</b>	<ul style="list-style-type: none"> <li>▪ 1 CO hinge with ball bearing</li> <li>▪ 1 spring hinge with belt sleeve (secured hinge bolts)</li> </ul>	
<b>Fittings</b>	<ul style="list-style-type: none"> <li>▪ 3-point locking (single turn), PC-perforated</li> <li>▪ FP-aluminium-safety handle set Class ES 1 DIN 18257</li> <li>▪ Safety profile cylinder P2 with anti-drilling and extraction protection BZ acc. DIN 18252</li> <li>▪ 3 keys and guarantee certificate</li> </ul>	

### Special equipment

- Lever handle set/ knob-lever set
- Handle on both sides for passage door
- Locks  
Profile cylinder 35 + 30
- Top door closer DIN EN 1154  
- hinge-/opposite hinge side
- Wide angle spyhole
- Chain guard (also lockable)
- Rain canopy/top rain guard

	Ordering dim./ Modular dim. Width x height	Clear passage size (corner frame) Width x height
<b>Standard sizes</b>	750 x 2000	680 x 1934
	2125	2059
	875 x 1875	805 x 1809
	2000	1934
	2125	2059
	1000 x 1875	930 x 1809
	2000	1934
	2125	2059
	1125 x 2125	1055 x 2059

Further qualifications  
(special versions)

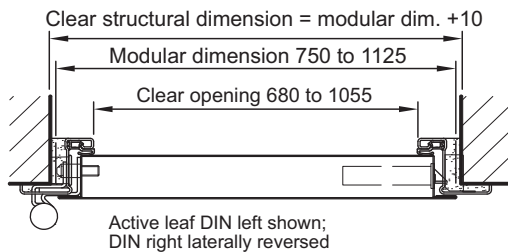
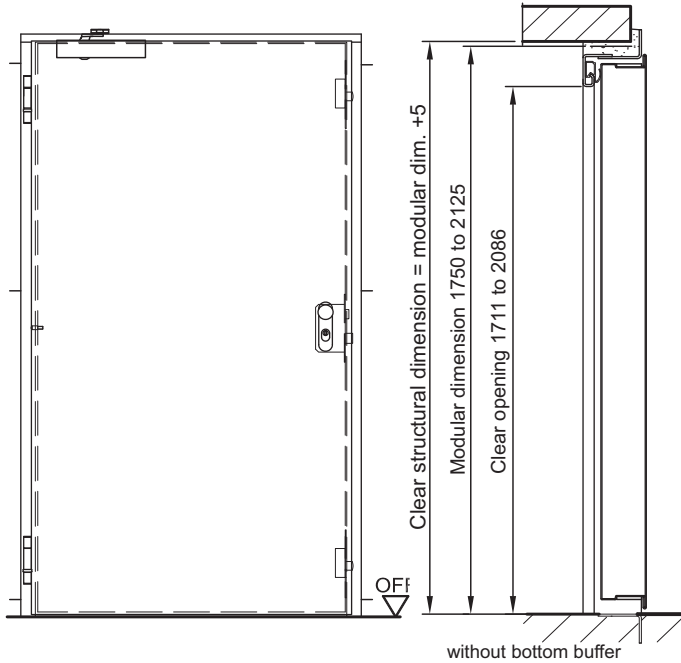


Sound insulated acc. DIN EN 20140/717 part 1  
RW **39dB** with bottom buffer and seal  
RW **37dB** with double sliding threshold seal  
(specify type of handling)



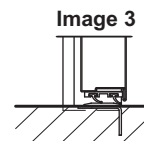
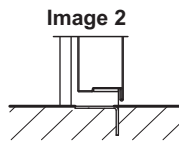
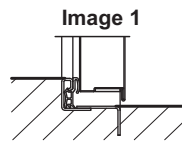
# Cellar-security door HT 8 HT 8 „Teckentrup“ WK 2

Door with **thin rebate**, left/right usable, with T30 approval



**Floor connections:**

Image 1: with bottom buffer/seal  
Image 2: without bottom buffer/seal  
Image 3: with double sliding threshold seal

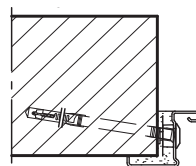


specify type of handling!

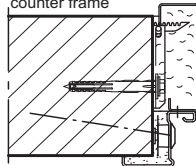
**Installation in masonry/  
concrete walls**  
concrete walls  $\geq 100$  mm  
masonry walls  $\geq 115$  mm

**Exposed masonry mounting**

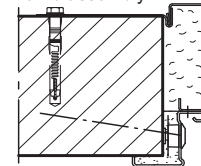
corner frame



corner frame with counter frame



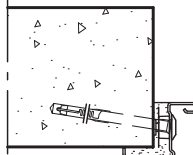
Alternative counter frame assembly



**Installation in autoclaved aerated concrete walls**  
Made of auto. aerated concrete stones or reinforced auto. aerated concrete, wall thickness min. 150 mm

**Exposed masonry mounting**

corner frame



Please find a detailed installation overview in the planning-, installation- and maintenance manual for 1-leaf and 2-leaf doors.