

Steel door MZD-HT 8 „Teckentrup“

left/right-handed, optionally with glazing



Text example

Compile and tender according to requirements.
Please refer to technical data below for respective details.
Updated 1st June 2015

| Position | No. of pieces | Item | Unit price € | Total price € |
|----------|---------------|--|--------------|---------------|
| | | MZD-HT 8 steel door. Single-leaf door element, can be used left/right-handed. Door leaf 42 mm thick, rebated on 4 sides. 4-sided corner frame, with 4-sided seal, 2 mm thick, design ensures that the bottom buffer can be removed. Mortice lock with latch lever, prepared for profile cylinder. Black plastic handle set. Handle pivoted in bearing, with tumbler insert (Bb) and 1 Bb key, 1 security bolt. 1 spring hinge, 1 KO-hinge with ball bearings. „Teckentrup“ or equivalent. | | |



Technical data

Product: MZD-HT 8 door “Teckentrup”
Can be used left/right handed
Heat insulation as per EN ISO 12567-1
 $U_D = 1.9 \text{ W/m}^2\text{K}$

Installation in:

- Masonry
- Concrete
- Autoclaved aerated concrete
- Lightweight construction wall

Dimensions: Width: 750 - 1125 mm
Height: 2000 - 2125 mm

Type of handing: Left/right handed

Door leaf: Double-skinned, **thin rebated** on 4 sides,
Sheet thickness: 0.9 mm
Door leaf thickness: 42 mm
Security bolt: 1
Reinforcement: flat steel
Insulation: mineral wool

Frame: Corner frame, four-sided, 2 mm thick, with 4-sided seal (sound insulation), design ensures that the bottom buffer can be removed.
4 welded-on wall anchor plugs on each side.

Special equipment:
counter frame

Surface: Galvanized and powder coated door leaf/frame, similar to RAL 9002 (grey white)

Hinges and closing devices:

- 1 construction hinge (KO) with ball bearings
- 1 spring hinge with hinge sleeve without automatic closing

Fittings:

- Mortice lock with latch lever, prepared for profile cylinder
- Black plastic handle set
Handle pivoted on bearing, with tumbler insert (Bb) and 1 Bb key

Glazing: Wire patterned glass or ISO wire patterned glass with LM glazing frame.
Standard sizes 230 x 1360 mm (window size)

Special equipment:

- Handle sets / Lever/Knob sets:
 - plastic
 - light metal
 - stainless steel
 - with short plate or rose escutcheon (various makes)
- Prepared for rose escutcheon (specify type of handling)
- Locks
 - profile cylinder 30.5 + 30.5 mm
 - panic locks
- Spring hinge
- Top door closer DIN EN 1154
- Hold-open devices
- Aluminium rain guard

Standard sizes:

| Ordering dimensions/ Modular dimensions width x height | Clear opening dimensions (corner frame) width x height |
|--|--|
| 750 x 1750 | 680 x 1715 |
| 1875 | 1840 |
| 2000 | 1965 |
| 800 x 1800 | 730 x 1765 |
| 1875 | 1840 |
| 2000 | 1965 |
| 875 x 1750 | 805 x 1715 |
| 1800 | 1765 |
| 1875 | 1840 |
| 2000 | 1965 |
| 2125 | 2090 |
| 1000 x 1875 | 930 x 1840 |
| 2000 | 1965 |
| 2125 | 2090 |
| 1125 x 2000 | 1055 x 1965 |
| 2125 | 2090 |

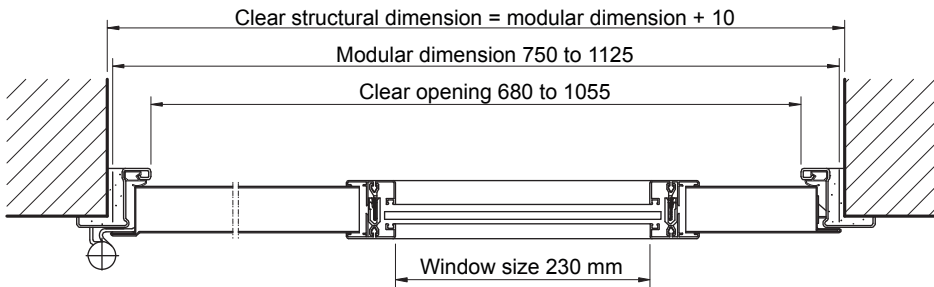
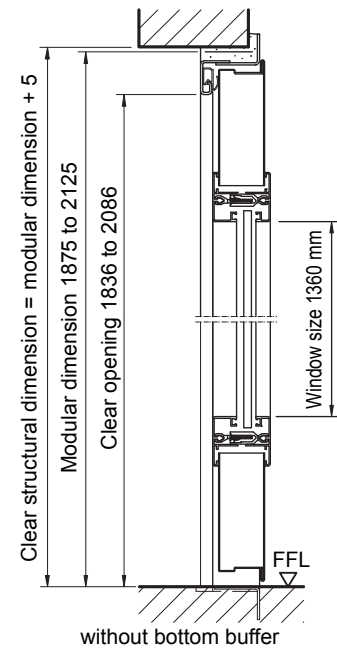
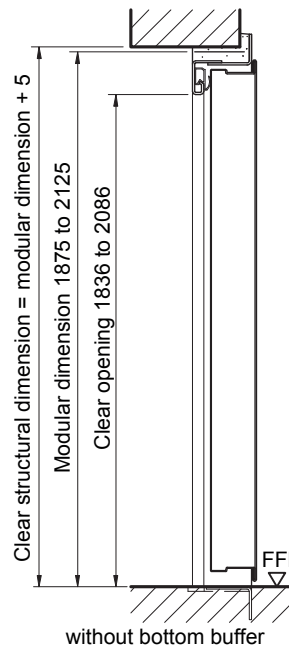
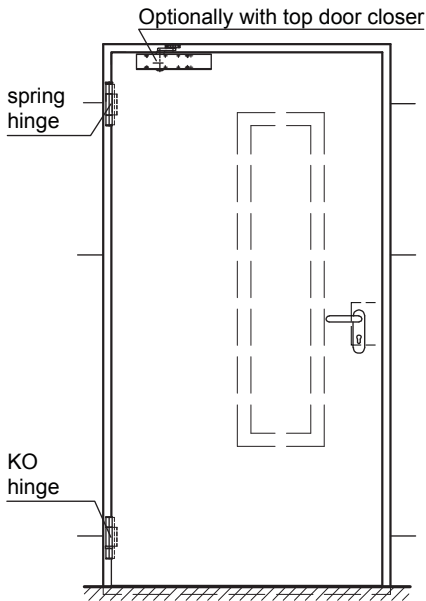
Further qualifications (special equipment):



- **Sound insulated** as per DIN EN 20140/717-1
RW 39dB with bottom buffer (standard)
RW 37dB with sliding threshold seal

Steel door MZD-HT 8 „Teckentrup“

left/right-handed, optionally with glazing

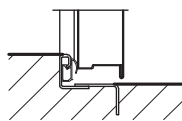


DIN left shown,
DIN right laterally reversed

Floor connections

Image 1: with bottom buffer

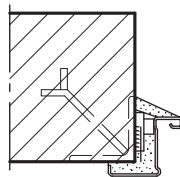
Image 1



(Sound insulation RW 39 dB)

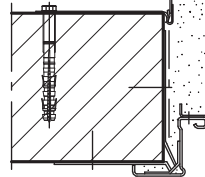
Installation in masonry/ concrete walls

Weld-on assembly



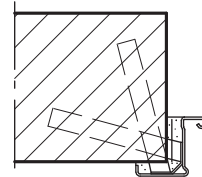
Corner frame

Wall plug assembly



Corner- with counter frame

Wall anchor assembly



Corner frame