

Smoke-proof steel door „RS-1“

in accordance with DIN 18095/EN 1634-3
optionally with glazing



Text example

Compile and tender according to requirements.
Please refer to technical data below for respective details.
Updated 1st June 2015



Position	No. of pieces	Item	Unit price €	Total price €
		Smoke-proof steel door RS-1, tested in accordance with DIN 18095. Single-leaf door element. Type of handing DIN right. Galvanized and prime coated door leaf similar to RAL 9002 (grey white), 62 mm thick, rebated on 3 sides, galvanized and prime coated corner frame similar to RAL 9002 (grey white), 1,5 mm thick, with 3-sided seal and lower bottom threshold for sliding threshold seal in the door leaf. Mortice lock with latch lever, prepared for profile cylinder with tumbler insert (Bb) and 1 Bb key. Black plastic handle set, handle pivoted on bearing, can be used for profile cylinder. Smoke-proof doors must be equipped with a profile cylinder. 2 three-piece hinges, 1 top door closer, 1 security bolt. "Teckentrup" or equivalent.		

Technical data

Building authority approval:

Tested as per DIN 18095/EN 1634-3

Installation in:

- Walls made of:
- Masonry min. 115 mm
 - Concrete min. 100 mm
 - Lightweight stud walls * min. 100 mm
 - Aerated concrete block
 - as per DIN 4165 min. 115 mm
 - reinforced min. 115 mm

* Lightweight construction stud walls \geq F 30 as per DIN 4102-4 or as per general building authority test certificate.

Approved dimensions:

Width: 625 - 1350 mm
Height: 1750 - 2500 mm

Type of handing:

DIN right or DIN left

Door leaf:

Double-skinned, **thin** rebated on 3 sides
Door leaf thickness: 62 mm
Sheet thickness: 1.0 mm
Security bolts: min. 1
Insulation: mineral fibre boards

Frame:

Corner frame, 1.5 mm thick with 3-sided seal and lower bottom threshold for sliding threshold seal in the door leaf. Fixed with 3 screws on each side
Special equipment:
Block-, counter- or closed frame (always counter frame for aerated concrete walls)

Surface:

Galvanized and prime coated door leaf/frame similar to RAL 9002 (Grey white)

Hinges and closing devices:

- 2 three-piece KO-hinges with ball bearings and 1 top door closer

Fittings:

- Mortice lock with latch lever, prepared for profile cylinder with tumbler insert (Bb) and 1 Bb key as per DIN 18250
- Black plastic handle set. Handle pivoted on bearing, can be used for profile cylinder and Bb key. (Smoke-proof doors must be equipped with a **profile cylinder**)

Glazing:

Standard: rectangular glazing with aluminium holding strips), laminated safety glass 16 mm thick, or round glazing with steel holding strips, laminated safety glass 6 mm thick.
Max. pane dimensions 741 x 1658 mm.

Special equipment:
laminated safety glass
wire plate glass
steel cord laminated safety glass
single-pane safety glass
pyran glass

8 mm
6 - 7 mm
6 mm
6 or 8 mm
6.5 mm

Special equipment:

- Handle sets / Lever/Knob sets:
 - plastic
 - stainless steel
 - light metal
 - with short plate or rose escutcheon (various makes)
- Locks:
 - profile cylinder 40.5 + 40.5 mm
 - panic locks
 - block lock (must be provided)
- Panic bar handle
- Top door closer DIN EN 1154
 - head assembly
 - with slide rail
 - with locking device
 - with smoke detector
 - integrated door closer ITS 96
- Electric door opener
- Integrated lock inspector (bolt contact)
- Integrated opening indicator (Reed contact)
- Revolving door drives

Standard sizes steel door :

(Special sizes:
From 625 x 1750 mm to 1350 x 2500 mm)

Ordering size/ Modular dimensions width x height	Clear opening size (Corner frame) width x height
750 x 2000	666 x 1961
2125	2086
875 x 1875	791 x 1836
2000	1961
2125	2086
1000 x 2000	916 x 1961
2125	2086
1125 x 2000	1041 x 1961
2125	2086
1250 x 2000	1166 x 1961
2125	2086
2250	2211

- Hold-open devices
- Retractable bottom seal

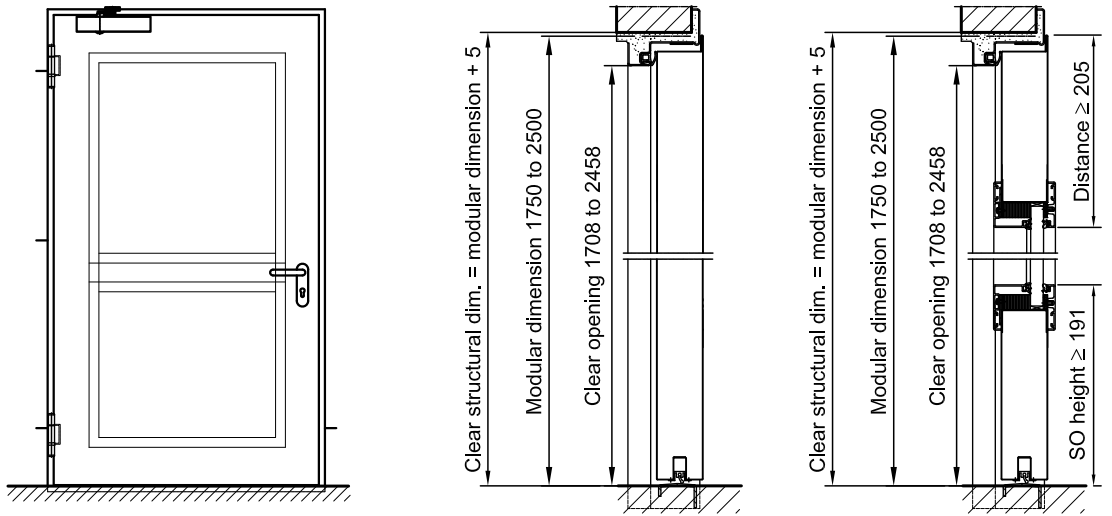
Further qualifications (special equipment):



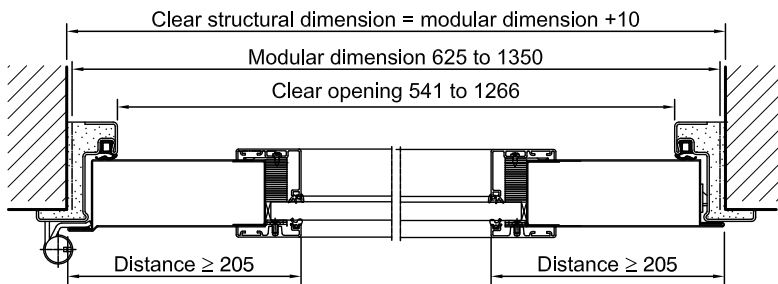
- **Burglar-resistant** as per DIN EN 1627 - **RC 2 (WK 2), RC 3 (WK 3)**

Smoke-proof steel door „RS-1“

in accordance with DIN 18095/EN 1634-3
optionally with glazing



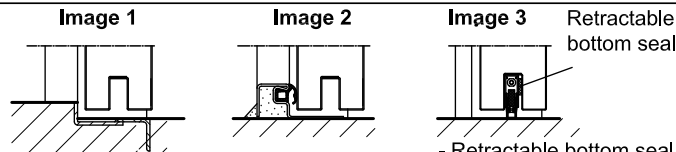
With through glazing and aluminium glass-holding strip



DIN left shown
DIN right laterally reversed

Floor connections:

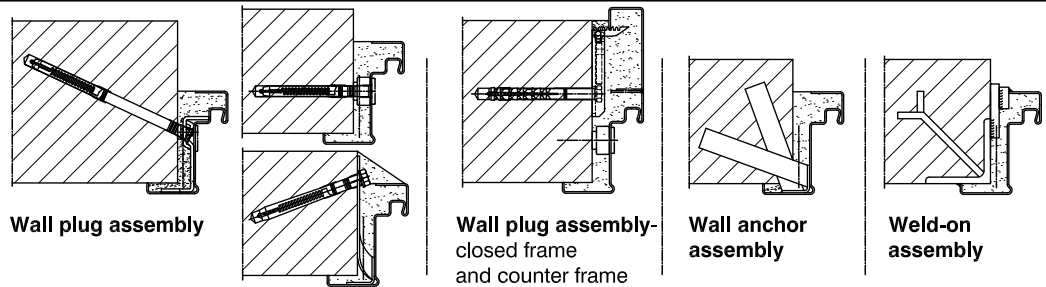
Image 1: With bottom buffer
Image 2: With bottom buffer/seal
Image 3: With bottom seal
(smoke-proof door with top door closer)



- Retractable bottom seal, Sliding threshold seal

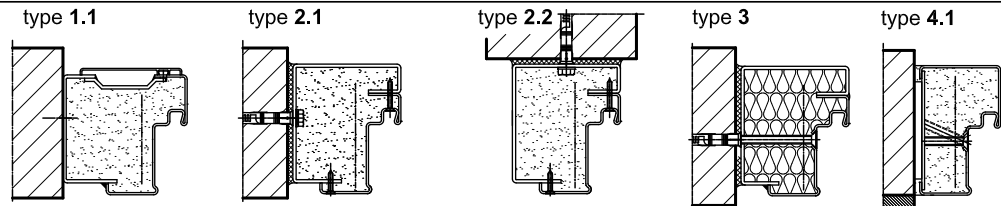
Installation in masonry/ concrete walls

concrete walls ≥ 100 mm
masonry walls ≥ 115 mm



Installation with block frame Flush installation between

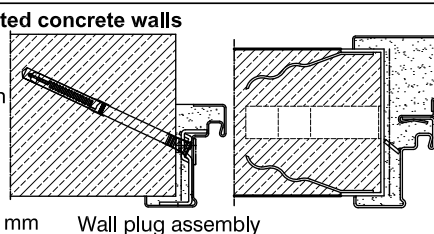
concrete walls ≥ 100 mm
masonry walls ≥ 115 mm



Disassembled version in front of the reveal Pre-assembled version

Installation in autoclaved aerated concrete walls

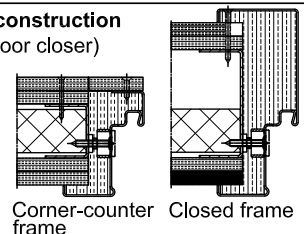
(doors with top door closer).
Made of autoclaved aerated concrete blocks or high precision units in acc. with DIN 4165 strength class 4 min. 115 mm or made of reinforced autoclaved aerated concrete slabs strength class 4. Wall thickness min. 115 mm



Wall plug assembly

Installation in lightweight construction stud walls

(doors with top door closer)
Installation walls F30 in acc. with DIN 4102 Part 4 or in acc. with general building authority test certificate, wall thickness min. 100 mm. For permissible walls refer to the installation details tab



Corner-counter frame Closed frame