

Smoke-proof steel door „RS-2“

in accordance with DIN 18095/EN 1634-3
optionally with glazing



Text example

Compile and tender according to requirements.
Please refer to technical data below for respective details.
Updated 1st June 2015

Position	No. of pieces	Item	Unit price €	Total price €
		Smoke-proof steel door "RS-2", tested in accordance with DIN 18095/EN 1634-3. Double-leaf door element, active door leaf DIN right. 62 mm thick, rebated on 3 sides. Corner frame 1.5 mm thick, with 3-sided seal and lower bottom threshold for sliding threshold seal in the door leaf. Galvanized and prime coated leaf and frame, similar to RAL 9002 (Grey white). Active door leaf with mortice lock with latch lever, prepared for profile cylinder as per DIN 18250. Black plastic handle set, handle pivoted on bearing, can be used for profile cylinder and Bb key. Smoke-proof doors must be equipped with a profile cylinder. Inactive door leaf with 1 door selector and espagnolette bolt lock with top locking. 1 security bolt per leaf. "Teckentrup" or equivalent.		



Technical data

Building authority approval:

Tested as per DIN 18095/EN 1634-3

Installation in:

Walls made of:

- Masonry min. 115 mm
- Concrete min. 100 mm
- Lightweight stud walls * min. 100 mm
- Aerated concrete block
 - as per DIN 4165 min. 115 mm
 - reinforced min. 115 mm

* Lightweight construction stud walls ≥ F 30 as per DIN 4102-4 or as per general building authority test certificate.

Approved dimensions:

Width: 1375 - 2500 mm
Height: 1750 - 2500 mm

Type of handing:

Active door leaf DIN right or DIN left

Door leaf:

Double-skinned, **thin** rebated on 3 sides
Door leaf thickness: 62 mm
Sheet thickness: 1.0 mm
Security bolts per leaf: min. 1
Insulation: mineral fibre boards

Frame:

Corner frame 1.5 mm thick with 3-sided seal and lower contact threshold for sliding threshold seal in the door leaf. Fixed with 3 screws on each side.
Special equipment:
counter- or closed frame
Counter frame always for aerated concrete walls

Surface:

Galvanized and prime coated door leaf/frame similar to RAL 9002 (Grey white)

Hinges and closing devices:

- 4 three-piece KO hinges with ball bearings
- 2 top door closers DIN EN 1154
- 1 door selector

Fittings:

- Active door leaf:
- Mortice lock with latch lever, prepared for profile cylinder as per DIN 18250
 - Black plastic handle set, handle pivoted on bearing, can be used for profile cylinder and Bb key. (Smoke-proof doors must be equipped with a **profile cylinder**)
- Inactive door leaf:
- 1 door selector
 - Espagnolette bolt lock with standard top locking

Glazing:

Standard: rectangular glazing with aluminium holding strips), laminated safety glass 16 mm thick, or round glazing with steel holding strips, laminated safety glass 6 mm thick.
Max. pane dimensions 741 x 1658 mm.

Special equipment:

- laminated safety glass 8 mm
- wire plate glass 6 - 7 mm
- steel cord laminated safety glass 6 mm
- single-pane safety glass 6 or 8 mm
- pyran glass 6.5 mm

Special equipment:

- Handle sets / Lever/Knob sets:
 - plastic · light metal
 - stainless steel
 - with short plate or rose escutcheon (various makes)
- Prepared for rose escutcheon
- Locks:
 - profile cylinder 40.5 + 40.5 mm
 - panic locks
 - block lock (must be provided)
- Panic bar handle
- Top door closer DIN EN 1154
 - head assembly · with slide rail
 - with locking devices · with smoke detector
 - with door selector
 - integrated door closer ITS 96
- Integrated lock protector (bolt contact)
- Integrated opening indicator (Reed contact)
- Hold-open devices
- Retractable bottom seal

	Ordering size/ Modular dimensions width x height	Clear opening size (corner frame) width x height
Standard sizes:	1500 x 2000	1416 x 1961
	2125	2086
	1750 x 2000	1666 x 1961
	2125	2086
(Special sizes from 1375 x 1750 to 2500 x 2500 mm)	2000 x 2000	1916 x 1961
	2125	2086
	2500	2461
	2125 x 2125	2041 x 2086
	2250 x 2250	2166 x 2211
	2500 x 2500	2416 x 2461

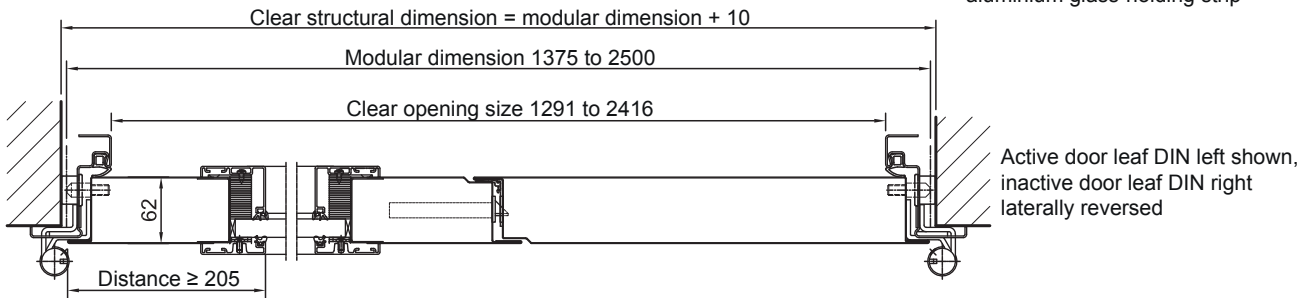
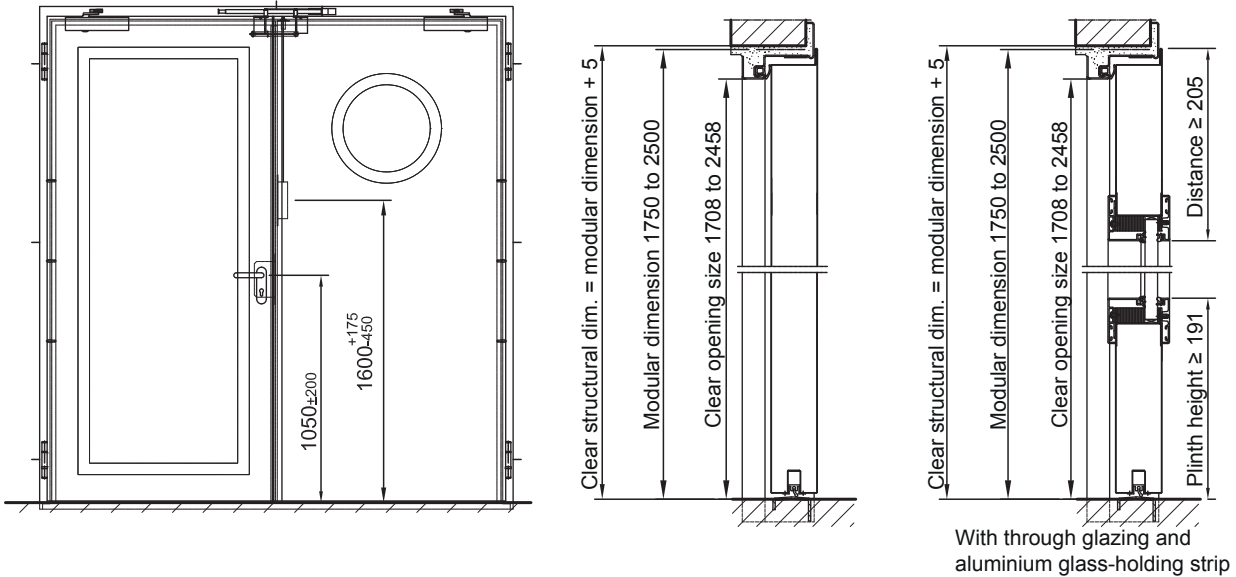
Further qualifications (special equipment):

- Burglar-resistant as per DIN EN 1627 - RC 2 (WK 2), RC 3 (WK 3)



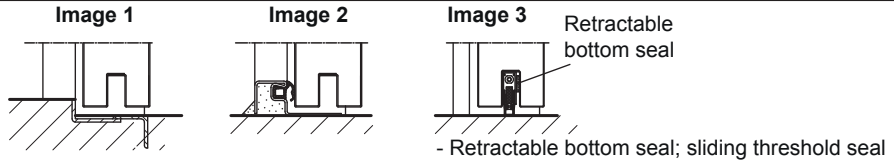
Smoke-proof steel door „RS-2“

in accordance with DIN 18095/EN 1634-3
optionally with glazing



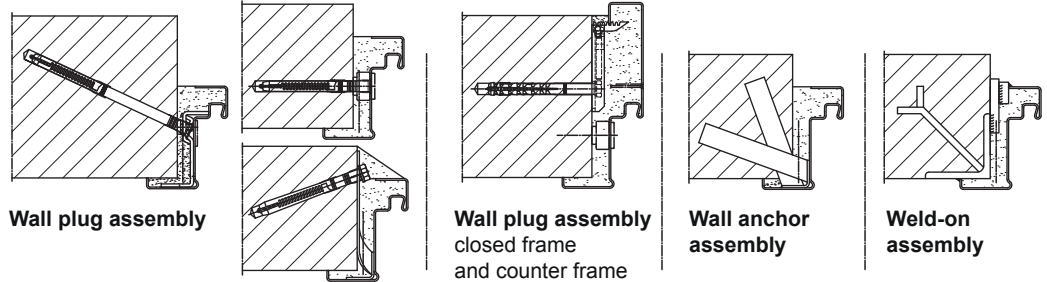
Floor connections:

image 1: with bottom buffer
image 2: with bottom buffer + seal
image 3: with bottom seal
(smoke-proof door with top door closer)



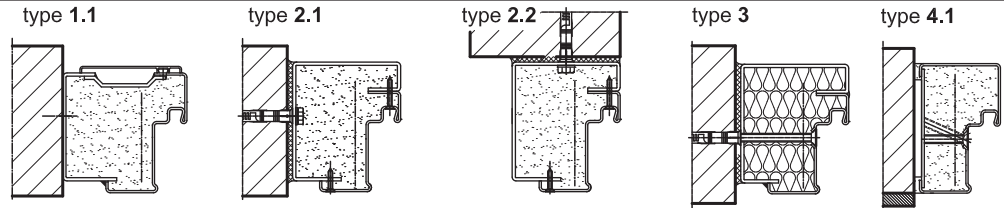
Installation in masonry/ concrete walls

concrete walls ≥ 100 mm
masonry walls ≥ 115 mm



Installation with block frame for flush installation between

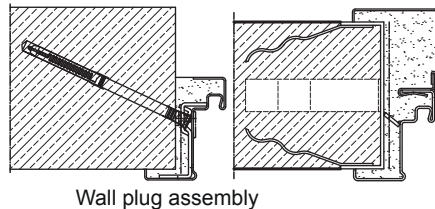
concrete walls ≥ 100 mm
masonry walls ≥ 115 mm



Disassembled version in front of the reveal Pre-assembled version

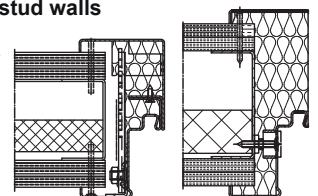
Installation in aerated concrete walls

(walls with top door closer)
Made of autoclaved aerated concrete blocks or precision units as per DIN 4165, strength class 4 min. 115 mm or made of reinforced aerated concrete slabs, strength class 4 min. 115 mm wall thickness.



Installation in lightweight stud walls

(walls with top door closer)
Installation walls F30 as per DIN 4102-4 or as per general building authority test certificate, wall thickness min. 100 mm.



Corner-/counter frame Closed frame