

Security steel door dw 42-1 „Teckentrup“ WK 2



Text example

Compile and tender according to requirements.
Please refer to technical data below for respective details.
Updated 1st June 2015

Position	No. of pieces	Item	Unit price €	Total price €
		Security steel door dw 42-1 „Teckentrup“, tested in accordance with DIN ENV 1627-WK 2. Single-leaf door element. Type of handing DIN right. Door-leaf 42 mm thick, rebated on 3-sides. Corner frame 2.0 mm thick, with 3-sided seal. Door leaf and frame galvanized and powder-coated (primed) in Grey white, similar to RAL 9002. FS-Alu safety-handle set, class ES 1 DIN 18257. Safety profile cylinder P2 with anti-drilling and extraction protection BZ as per DIN 18252. 3 keys and security certificate. 2 KO hinges with ball bearings. 1 security bolt.		
		Steel door dw 42-1 „Teckentrup“ or equivalent		



Technical data

Product: Security steel door **dw 42-1 „Teckentrup“** in accordance with DIN ENV 1627
Heat insulation $U_D = 1.9 \text{ W}/(\text{m}^2 \cdot \text{K})$ (1.0 mm)
Heat insulation $U_D = 2.1 \text{ W}/(\text{m}^2 \cdot \text{K})$ (1.5 mm)

Installation in:

- Masonry min. 115 mm
- Concrete min. 120 mm
- Autoclaved aerated concrete
 - as per DIN 4165 min. 175 mm
 - reinforced min. 150 mm

Dimensions:

width: 750 - 1250 mm
height: 1750 - 2250 mm

Type of handing: DIN right or DIN left

Door leaf: Double-skinned, thin rebated on 3 sides
Door leaf thickness: 42 mm
Sheet thickness: 1 or 1.5 mm
Security bolts: min. 1
Reinforcement: flat steel
Insulation: mineral fibre board

Frame: Corner frame 2 mm thick, with 3-sided seal and bottom sill.
Frame fixed with 3 screws each side.
Special equipment:
- counter frame, 1.5 mm thick
- block frame or closed frame 2.0 mm thick

Surface: Door leaf/Frame galvanized and powder coated (primed) similar to RAL 9002 (Grey white).

Hinges, closing devices:

- 2 KO hinges with ball bearings (secured hinge bolt)

Fittings:

- Mortice lock with latch lever, prepared for profile cylinder
- FS-Alu safety-handle set, class ES 1 DIN 18257
- Safety profile cylinder P2 with anti-drilling and extraction protection BZ, DIN 18252
- 3 keys and security certificate

Additional equipment:

- Handle sets / Lever/Knob sets:
 - light metal
 - stainless steel
- Locks
 - profile cylinder 35.5 + 30.5
 - panic locks
 - block lock (must be provided)
- Additional top and bottom locking
- Top door closer DIN EN 1154
- Wide angle spyhole
- Lock control (bolt contact), integrated
- Escape door opener
- Alarm wire insert
- Security chain (also lockable)
- Rain guard

Standard sizes:

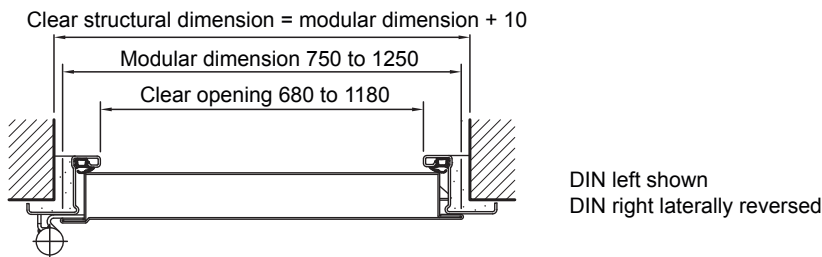
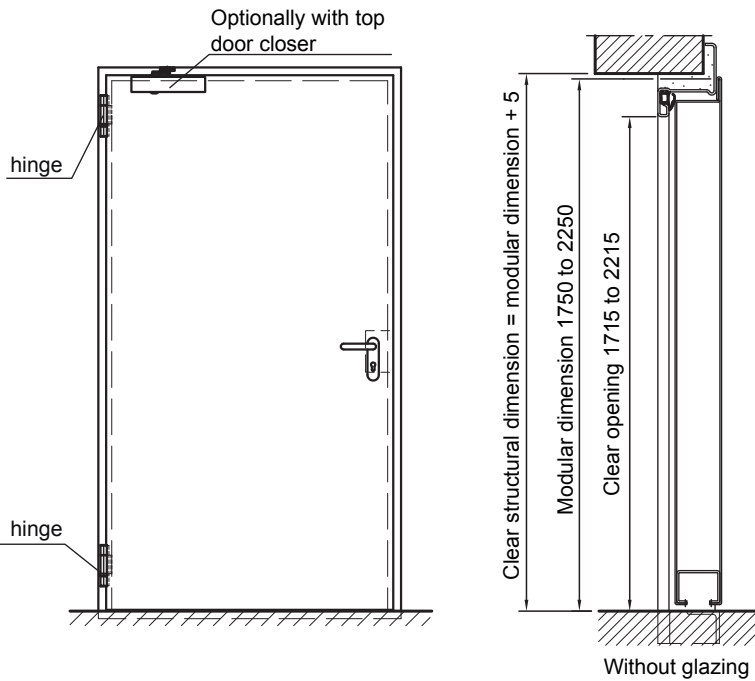
Ordering size/ Modular dim width x height	Clear passage size (corner frame) width x height
750 x 2000	680 x 1965
875 x 1875	805 x 1840
2000	1965
2125	2090
1000 x 2000	930 x 1965
2125	2090
1125 x 2000	1055 x 1965
2125	2090
1250 x 2000	1180 x 1965
2125	2090
2250	2215

Further qualifications (special equipment):



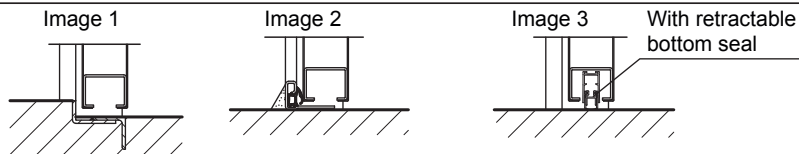
- **Sound insulated** as per DIN EN 20140/717-1
Rw 43dB with bottom buffer
Rw 38dB with retractable bottom seal
Rw 38dB with sliding threshold seal

Security steel door dw 42-1 „Teckentrup“ WK 2



Floor connections:

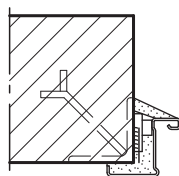
Image 1: With bottom buffer
Image 2: With buffer strip and seal
Image 3: With retractable bottom seal



Installation in masonry/ concrete walls

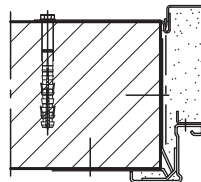
concrete walls ≥ 100 mm
masonry walls ≥ 115 mm

Weld-on assembly



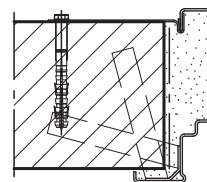
Corner Frame

Wall plug assembly

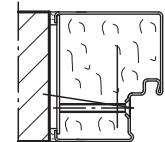


Corner Frame with counter frame

Wall anchor assembly



Closed Frame

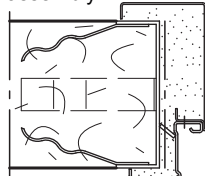


block-frame type 4.2

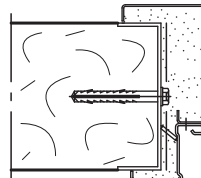
Installation in autoclaved aerated concrete walls

Made of autoclaved aerated concrete blocks or high precision units in acc. with DIN 4165 strength class 4 min. 150 mm or made of reinforced autoclaved aerated concrete slabs strength class 4. Wall thickness ≥ 150 mm

Wall anchor assembly



Wall plug assembly



Wall plug assembly

