

Security steel door dw 52-1

„Teckentrup DF“ WK 2

optionally with glazing/ventilation grille



Text example

Compile and tender according to requirements.
Please refer to technical data below for respective details.
Updated 1st June 2015



Position	No. of pieces	Item	Unit price €	Total price €
		Security steel door dw 52-1 „Teckentrup“, tested in accordance with DIN ENV 1627-WK 2. Single-leaf door element. Type of handing DIN right. Door-leaf 52 mm thick, rebated on 3-sides with thick rebate. Corner frame 2.0 mm thick, with 3-sided seal and bottom seal. Door leaf and frame galvanized and primed in Grey white, similar to RAL 9002. FS-Alu safety-handle set, class ES 1 DIN 18257. Safety profile cylinder with anti-drilling and extraction protection BZ, DIN 18252. 3 keys and security certificate. 2 KO hinges with ball bearings. 2 security bolts. Steel door dw 52-1 „Teckentrup“ or equivalent		

Also available in:
STAINLESS STEEL

Technical data

Product: Security Steel Door **dw 52-1 „Teckentrup DF“**
in accordance with DIN ENV 1627-WK 2
also sound insulated up to Rw 42 dB
(with buffer strip)

Installation in:

- Masonry min. 115 mm
- Concrete min. 100 mm
- Aerated concrete - as per DIN 4165 min. 175 mm
- reinforced min. 150 mm

Dimensions:

width: 625 - 1350 mm
height: 1750 - 2500 mm

Type of handing: DIN right or DIN left

Door leaf: Double-skinned, thick rebated on 3 sides
Door leaf thickness: 52 mm
Sheet thickness: 1.0 or 1.5 mm
Security bolts: min. 2
Reinforcement: U-shaped/flat steel
Insulation: mineral fibre board

Frame: Corner frame 2 mm thick, with 3-sided seal and bottom sill.
Frame fixed with 3 wall anchors each side.
Special equipment:
- counter frame, 1.5 mm thick
- block frame or closed frame, 2.0 mm thick

Surface: Door leaf/Frame galvanized and primed similar to RAL 9002 (Grey white).

Hinges, closing devices:

- 2 KO hinges with ball bearings (secured hinge bolt)

Fittings:

- Mortice lock with latch lever, prepared for profile cylinder
- FS-Alu safety-handle set, class ES 1 DIN 18257
- Safety profile cylinder with anti-drilling and extraction protection BZ, DIN 18252
- 3 keys and security certificate

Glazing: Burglar resistance class as per DIN EN 356-P4A.
VSG (laminated safety glass) 10 mm, ISO-glass VSG/VSG 24 mm
Clear size max. 1m²

Additional equipment:

- Handle sets / Lever/Knob sets:
 - light metal
 - stainless steel
- Locks
 - profile cylinder 45.5 + 30.5 (Danger side = hinge side)
 - profile cylinder 35.5 + 40.5 (Danger side = opposite hinge side)
 - panic locks
 - block lock (must be provided)
- Top door closer DIN EN 1154
- Wide angle spyhole
- Lock control (bolt contact), integrated
- Escape door opener
- Alarm wire insert
- Security chain (also lockable)
- Steel transformer grille
- Rain guard

	Ordering size/ Modular dim. width x height	Clear passage size (corner frame) width x height
Standard sizes:	750 x 2000	666 x 1958
	875 x 1875	791 x 1833
	2000	1958
	2125	2083
	1000 x 2000	916 x 1958
	2125	2083
	1125 x 2000	1041 x 1958
	2125	2083
	1250 x 2000	1166 x 1958
	2125	2083
	2250	2208

Further qualifications (special equipment):

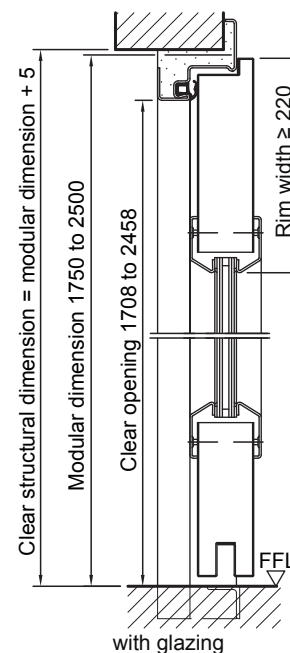
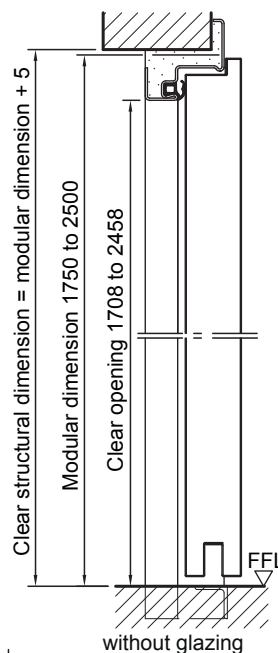
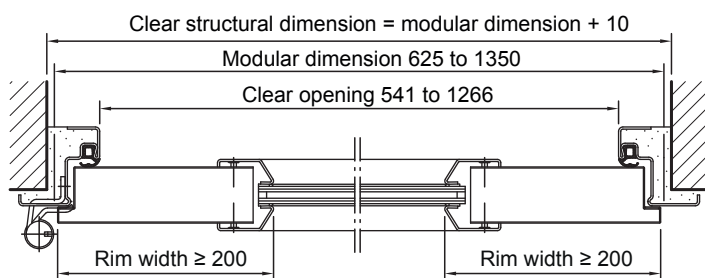
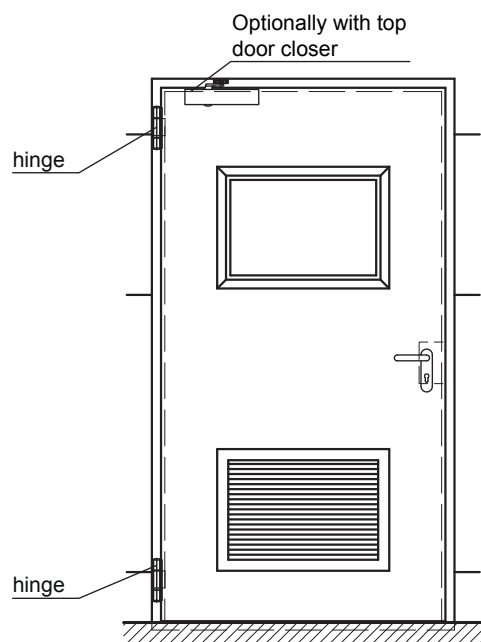


- **Sound insulated** as per DIN EN 20140/717-1
RW 40 dB with retractable bottom seal
RW 42 dB with buffer strip

Security steel door dw 52-1

„Teckentrup DF“ WK 2

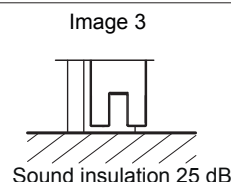
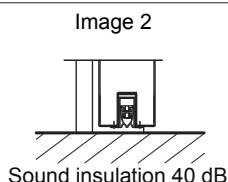
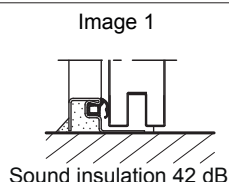
optionally with glazing/ventilation grille



DIN left shown,
DIN right laterally reversed

Floor connections:

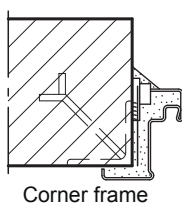
Image 1: with buffer strip and seal
Image 2: with retractable bottom seal
Image 3: without bottom seal



Installation in masonry/ concrete walls

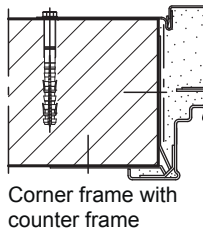
concrete walls ≥ 100 mm
masonry walls ≥ 115 mm

Weld-on assembly



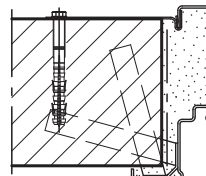
Corner frame

Wall plug assembly



Corner frame with
counter frame

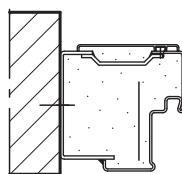
Wall anchor assembly



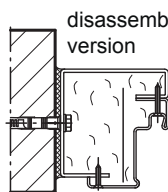
Closed frame

Installation with block frame Flush installation between

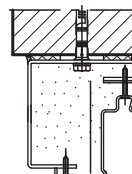
concrete walls ≥ 100 mm
masonry walls ≥ 115 mm



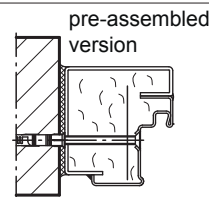
block-frame **type 1.1**



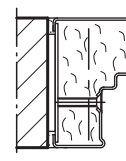
block-frame **type 2.1**



block-frame **type 2.2**



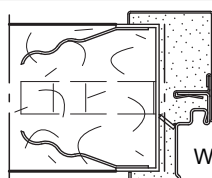
block-frame **type 3**



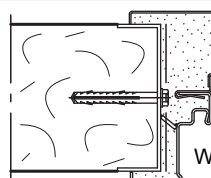
block-frame **type 4.1**

Installation in autoclaved aerated concrete walls

Made of autoclaved aerated concrete
blocks or high precision units in acc.
with DIN 4165 strength class 4 min.
175 mm or made of reinforced auto-
claved aerated concrete slabs strength
class 4. Wall thickness ≥ 150 mm



Wall anchor assembly



Wall plug assembly

Security steel door dw 52-1

„Teckentrup DF“ WK 3

optionally with glazing, upper casing, ventilation grille



Text example

Compile and tender according to requirements.

Please refer to technical data below for respective details.

Updated 1st June 2015

Position	No. of pieces	Item	Unit price €	Total price €
		Security steel door dw 52-1 „Teckentrup“, tested in accordance with DIN ENV 1627-WK 3. Single-leaf door element. Type of handing DIN right. Door-leaf 52 mm thick, rebated on 3-sides with thick rebate. Corner frame 2.0 mm thick, with 3-sided seal and bottom seal. Door-leaf and frame galvanized and primed in Grey white, similar to RAL 9002. FS-Alu safety-handle set, class ES 3 DIN 18257. Safety profile cylinder with anti-drilling and extraction protection BZ, DIN 18252, class 2. 3 keys and security certificate. 2 KO hinges with ball bearings. 4 security bolts. Steel door dw 52-1 „Teckentrup“ or equivalent		



Technical data

Product: Security Steel Door **dw 52-1 „Teckentrup DF“**
in accordance with DIN ENV 1627-WK 3

Installation in:

- Masonry min. 115 mm
- Concrete min. 120 mm
- Autoclaved aerated concrete
 - as per DIN 4165 min. 150 mm
 - reinforced min. 150 mm

Dimensions:

width: 500 - 1500 mm
height: 1500 - 3000 mm
with upper casing up to height 3500 mm

Type of handing: DIN right or DIN left

Door leaf: Double-skinned, thick rebated on 3 sides
Door leaf thickness: 52 mm
Sheet thickness: 1.5 mm
Security bolts: min. 4
Reinforcement: U-shaped and flat steel
Insulation: mineral fibre board

Frame: Corner frame 2 mm thick, with 3-sided seal and bottom sill.
Frame fixed with 3 wall anchors each side.
Special equipment:
- counter frame, 1.5 mm thick,
- block frame or closed frame, 2.0 mm thick

Surface: Door leaf/Frame galvanized and primed similar to RAL 9002 (Grey white).

Hinges, closing devices:

- 2 KO hinges with ball bearings (secured hinge bolt)

Fittings:

- Mortice lock with latch lever, prepared for profile cylinder (up to MD-height 2375 mm only with main lock, > 2375mm with additional top and bottom locking)
- FS-Alu safety-handle set, class ES 3 DIN 18257
- Safety profile cylinder with anti-drilling and extraction protection BZ, DIN 18252, class 2
- 3 keys and security certificate

Glazing: Burglar resistance class as per DIN EN 356-P6B.
VSG (laminated safety glass) 18 mm, ISO-glass VSG/VSG 32 mm
Clear size max. 1m²

Additional equipment:

- Handle sets / Lever/Knob sets:
 - light metal
 - stainless steel
- Locks
 - profile cylinder 45.5 + 30.5 (Danger side = hinge side)
 - profile cylinder 35.5 + 40.5 (Danger side = opposite hinge side)
 - panic locks
 - block lock (must be provided)
- Top door closer DIN EN 1154
- integrated door closer ITS 96
- Wide angle spyhole
- Lock control (bolt contact), intrgr.
- Escape door opener
- E-door opener
- Alarm wire insert
- Security chain (also lockable)
- Steel transformer grille
- Rain guard

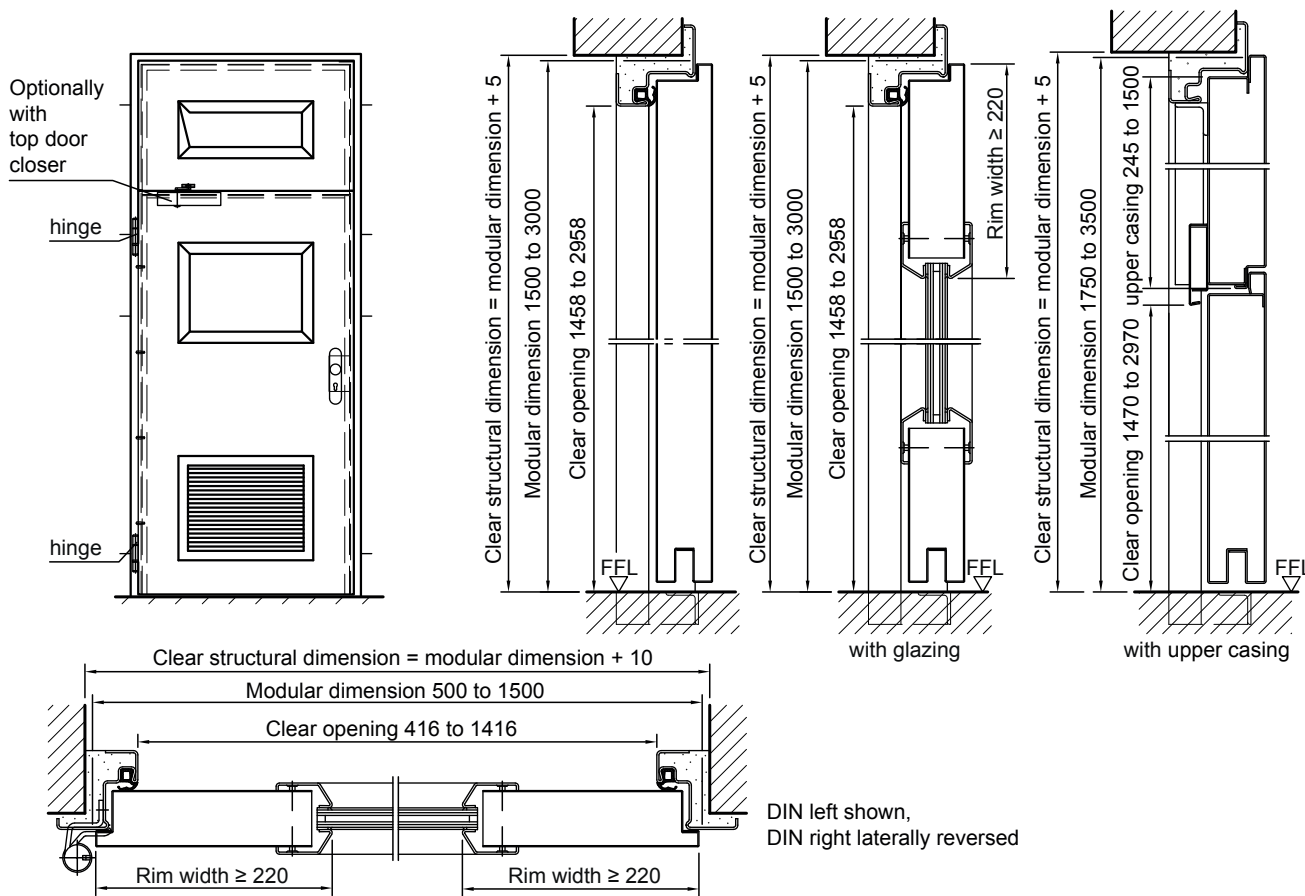
	Ordering size (modular dim.) width x height	Clear passage size (corner frame) width x height
Standard sizes:	750 x 2000	666 x 1958
	875 x 1875	791 x 1833
	2000	1958
	2125	2083
	1000 x 2000	916 x 1958
	2125	2083
	1125 x 2000	1041 x 1958
	2125	2083
	1250 x 2000	1166 x 1958
	2125	2083
	2250	2208

Also available in **STAINLESS STEEL**

Security steel door dw 52-1

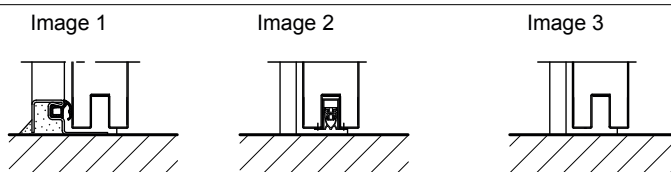
„Teckentrup DF“ WK 3

optionally with glazing, upper casing, ventilation grille



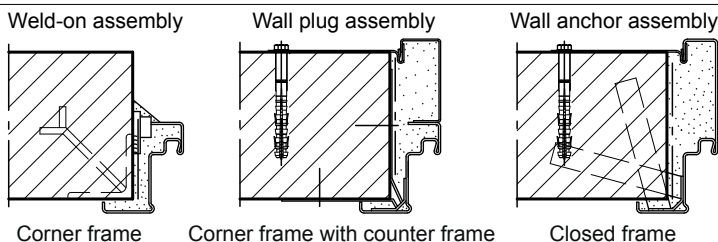
Floor connections:

Image 1: with buffer strip and seal
Image 2: with retractable bottom seal
Image 3: without bottom seal



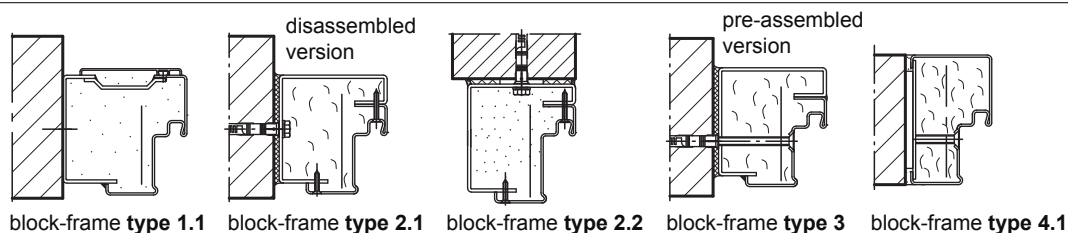
Installation in masonry/concrete walls

concrete walls ≥ 100 mm
masonry walls ≥ 115 mm



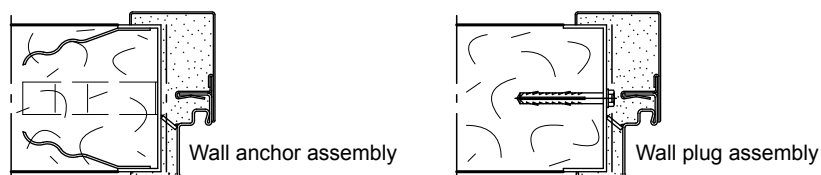
Installation with block frame Flush installation between

concrete walls ≥ 100 mm
masonry walls ≥ 115 mm



Installation in autoclaved aerated concrete walls

Made of autoclaved aerated concrete blocks or high precision units in acc. with DIN 4165 strength class 4 min. 150 mm or made of reinforced autoclaved aerated concrete slabs strength class 4. Wall thickness ≥ 150 mm



Security steel door dw 52-1

„Teckentrup DF“ WK 4

optionally with glazing, upper casing



Text example

Compile and tender according to requirements.

Please refer to technical data below for respective details.

Updated 1st June 2015

Position	No. of pieces	Item	Unit price €	Total price €
		Security steel door dw 52-1 „Teckentrup“, tested in accordance with DIN ENV 1627-WK 4. Single-leaf door element. Type of handing DIN right. Door leaf 52 mm thick, rebated on 3-sides with thick rebate. Corner frame 2.0 mm thick, with 3-sided seal and bottom seal. Door leaf and frame galvanized and primed in Grey white, similar to RAL 9002. FS-Alu safety-handle set, class ES 3 DIN 18257. Safety profile cylinder with anti-drilling and extraction protection BZ as per DIN 18252. 3 keys and security certificate. 2 KO hinges with ball bearings. 4 security bolts. Steel door dw 52-1 „Teckentrup“ or equivalent		



Technical data

Product: Security steel door **dw 52-1 „Teckentrup DF“** in accordance with DIN ENV 1627-WK 4

Glazing: Burglar resistance class as per DIN EN 356-P6B. VSG (laminated safety glass) 18 mm, ISO-glass VSG/VSG 32 mm Clear size max. 1m²

Installation in:

- Masonry min. 240 mm
- Concrete min. 140 mm

Dimensions:

width: 500 - 1500 mm
height: 1500 - 3000 mm
with upper casing height 3500 mm

Type of handing: DIN right or DIN left

Door leaf: Double-skinned, thick rebated on 3 sides
Door leaf thickness: 52 mm
Sheet thickness: 1.5 mm
Security bolts: min. 4
Reinforcement: inlay as per DIN ENV 1627
Insulation: mineral fibre board

Frame: Corner frame 2 mm thick, with 3-sided seal and bottom sill.
Frame fixed with 3 wall anchors each side.
Special equipment:
- counter frame, 1.5 mm thick
- block frame or closed frame, 2.0 mm thick

Surface: Door leaf/Frame galvanized and primed similar to RAL 9002 (Grey white).

Hinges, closing devices:

- 2 KO hinges with ball bearings (secured hinge bolt)

Fittings:

- Mortice lock with latch lever, prepared for profile cylinder with additional top and bottom locking
- FS-Alu safety-handle set, class ES 3 DIN 18257
- Safety profile cylinder with anti-drilling and extraction protection BZ as per DIN 18252 class 3
- 3 keys and security certificate

Additional equipment:

- Handle sets / Lever/Knob sets:
 - light metal
 - stainless steel
- Locks
 - profile cylinder 47.5 + 32.5 (Danger side = hinge side)
 - profile cylinder 37.5 + 42.5 (Danger side = opposite hinge side)
 - block lock (must be provided)
- Top door closer DIN EN 1154
- integrated door closer ITS 96
- Wide angle spyhole
- Lock control (bolt contact), integr.
- Escape door opener
- E-door opener
- Alarm wire insert
- Security chain (also lockable)
- Rain guard

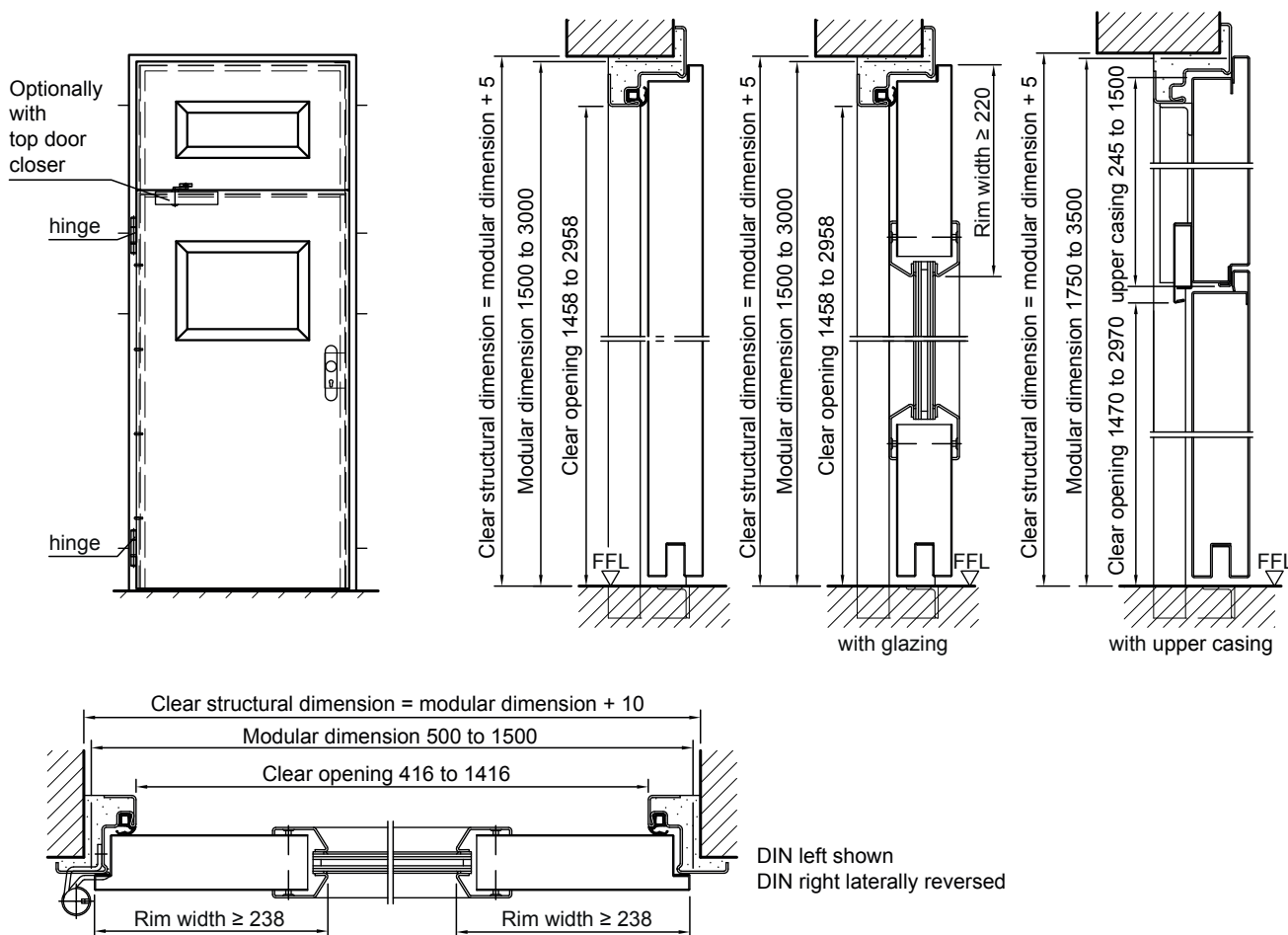
Standard sizes:

Ordering size/ Modular dim. width x height	Clear passage size (corner frame) width x height
750 x 2000	666 x 1958
875 x 1875	791 x 1833
2000	1958
2125	2083
1000 x 2000	916 x 1958
2125	2083
1125 x 2000	1041 x 1958
2125	2083
1250 x 2000	1166 x 1958
2125	2083
2250	2208

Security steel door dw 52-1

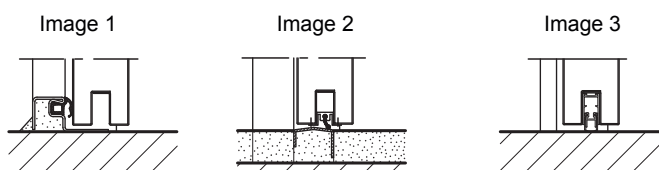
„Teckentrup DF“ WK 4

optionally with glazing, upper casing



Floor connections:

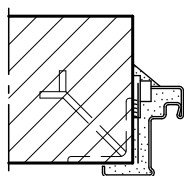
Image 1: with buffer strip and seal
Image 2: with sliding threshold seal
Image 3: with retractable bottom seal



Installation in masonry/ concrete walls

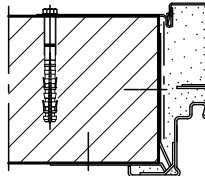
concrete walls ≥ 140 mm
masonry walls ≥ 240 mm

Weld-on assembly



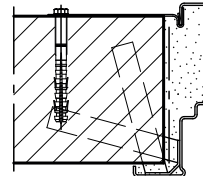
Corner Frame

Wall plug assembly



Corner Frame with
counter frame

Wall anchor assembly



Closed Frame

Installation with block frame Flush installation between

concrete walls ≥ 100 mm
masonry walls ≥ 115 mm

