



Security steel door dw 62-2 „Teckentrup“ RC 2- RC 4

Door with **thin rebate**, optionally with glazing/ventilation grille

Text example:

Security steel door dw 62-2 „Teckentrup“, tested in accordance with DIN EN 1627-RC 2. Double-leaf door element. Active door leaf DIN right. Door leaf 62 mm thick, rebated on 3-sides. Corner frame 1.5 mm thick, with 3-sided seal and bottom sill. Door-leaf and frame galvanized and powder-coated (primed) in Grey white, similar to RAL 9002. FS-Alu safety-handle set, class ES 1 DIN 18257. Safety profile cylinder P2 with anti-drilling and extraction protection BZ, DIN 18252. 3 keys and security certificate. 2 KO hinges with ball bearings. 1 security bolt per leaf.

Compile and tender according to requirements. Please refer to technical data below for respective details. Updated 1. April 2018

Technical data

Also available in **STAINLESS STEEL**

Product	Security steel door dw 62-2 „Teckentrup“ in accordance with DIN EN 1627- RC 2 - RC 4 Heat insulation as per EN ISO 12567-1 (unglazed), RC2 - RC3 = U _D : max. 1,4 W/m²K	
Installation in	<ul style="list-style-type: none"> ▪ Masonry min. 115 mm ▪ Concrete min. 100 mm ▪ Aerated concrete min. 170 mm ▪ Lightweight construction stud walls must meet the manufacturer`s security requirements. 	
Dimensions	width: 1375 - 3000 mm height: 1750 - 3000 mm	
Type of handing	DIN right or DIN left	
Door leaf	Double-skinned, 3 sides Door leaf thickness: 62 mm Sheet thickness: 1,0 or 1,5 mm Security bolts: min. 1 per leaf	thin rebated
Frame	Corner frame 1,5/2,0mm thick, trap door with 4-sided, door with 3-sided seal. Frame fastening by exposed masonry mounting. Special equipment: <ul style="list-style-type: none"> ▪ block-, counter- or closed frame ▪ with floor recess 	
Floor seals	<ul style="list-style-type: none"> ▪ Retractable floor seal ▪ Sliding threshold seal ▪ Buffer strip and seal Floor seal retrofittable	
Surface	Door leaf/Frame galvanized and prime coated, similar to RAL 9002 (Grey white). <ul style="list-style-type: none"> ▪ Special equipment: RAL of choice 	
Hinges and closing devices	<ul style="list-style-type: none"> ▪ 2 KO hinges with ball bearings per leaf (secured hinge bolt) 	
Fittings	<ul style="list-style-type: none"> ▪ RC 2: Active leaf = Mortise lock prepared for profile cylinder (up to MD-height 2750 mm only with main lock, > 2750 mm with top locking). FS alu safety handle set class ES 1 DIN 18257 ▪ RC 3: Active leaf = Reinforced mortise lock prepared for profile cylinder (up to MD-height 2500 mm only with main lock, > 2500 mm with top locking). FS alu safety handle set class ES 3 DIN 18257 ▪ RC 4: Active leaf = Mortise lock prepared for profile cylinder, with additional top and bottom locking. FS alu safety handle set class ES 3 DIN 18257 RC 2 - RC 4: Safety profile cylinder P2 with anti-drilling and extraction protection BZ as per DIN 18252. 3 keys and security certificate. Inactive leaf: Concealed flush lever bolt with top and bottom locking bar	

Glazing	<ul style="list-style-type: none"> ▪ RC 2: Burglar resistance class as per DIN EN 356-P4A ▪ RC 3: Burglar resistance class as per DIN EN 356-P5A ▪ RC 4: Burglar resistance class as per DIN EN 356-P6B RC 2 - RC 4: Standard: with aluminium glass holding strips (steel glass holding strips on request without additional charge).
Special equipment	Handle sets / Lever/Knob sets: - plastic - light metal - stainless steel - with short plate or rose escutcheon (various makes) locks: profile cylinder 45+ 40 mm - panic locks block lock (must be provided) <ul style="list-style-type: none"> ▪ top door closer DIN EN 1154 <ul style="list-style-type: none"> - head assembly - with slide rail - with locking device - with smoke detector - ITS 96 (hidden) ▪ electric door opener ▪ Integrated lock inspector (bolt contact) ▪ Integrated opening indicator (Reed contact) ▪ Hold-open devices ▪ 3D-hinges (with top door closer)

	Ordering dimensions / (modular dimensions) width x height	Clear passage size (corner frame) width x height
Standard sizes	1500 x 2000	1416 x 1958
	2125	2083
	1750 x 2000	1666 x 1958
	2125	2083
	2000 x 2000	1916 x 1958
	2125	2083
	2500	2458
	2125 x 2125	2041 x 2083
	2250 x 2250	2166 x 2208
	2500 x 2500	2416 x 2458

(Special sizes: from 1375 x 1750 to 3000x3500 mm)

Further Qualifications
(Special equipment)

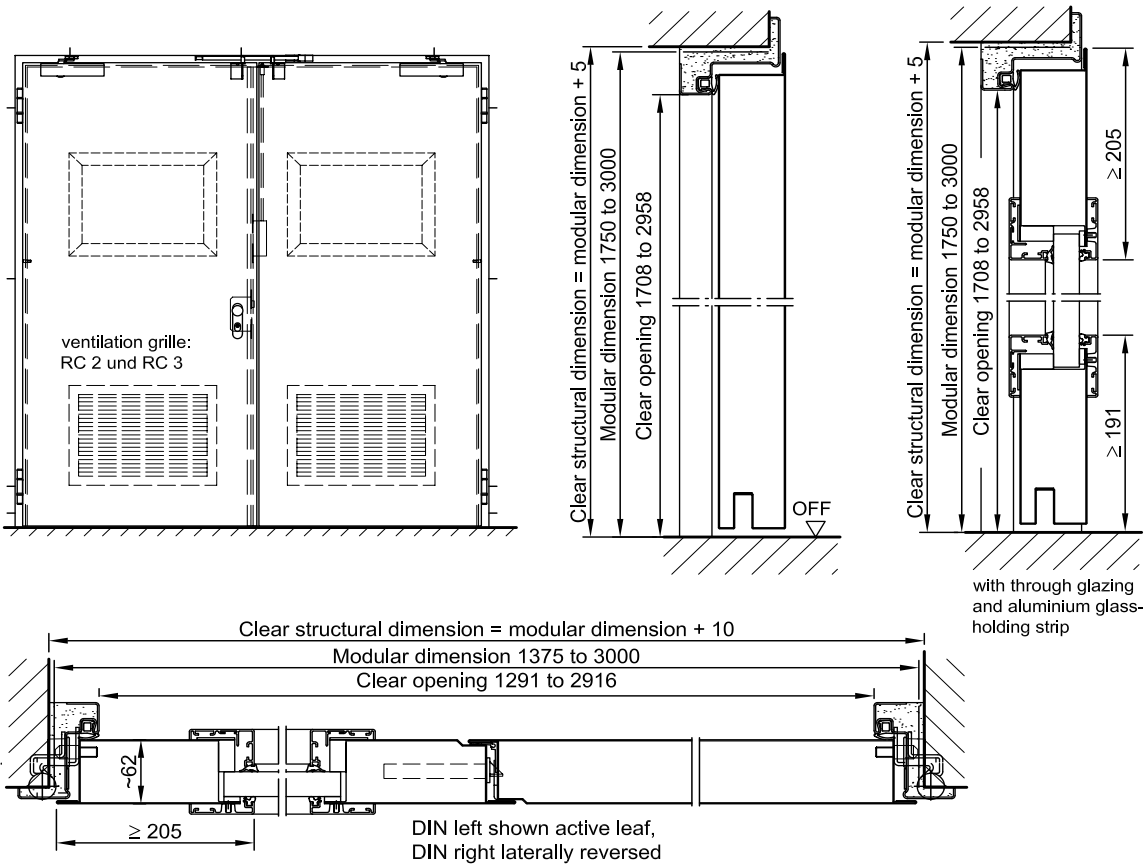


Sound insulated in acc. with DIN EN 20140/717 Part 1
 RC 2 / RC 3:
RW 37dB with bottom buffer and seal
RW 37dB with retractable floor seal
RW 35dB with sliding threshold seal



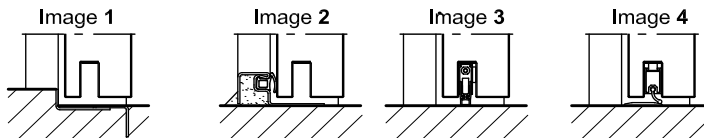
Security steel door dw 62-2 „Teckentrup“ RC 2- RC 4

Door with **thin rebate**, optionally with glazing/ventilation grille



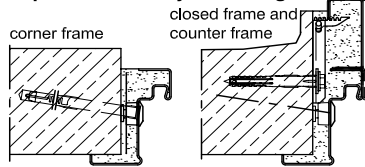
Floor connections:

- Image 1: With bottom buffer
- Image 2: With bottom buffer/seal
- Image 3: With bottom seal (smoke-proof door with top door closer)
- Image 4: sliding threshold seal

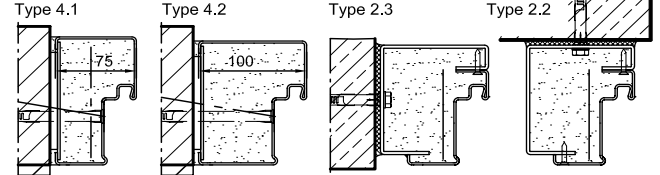


**Installation in masonry/
concrete walls**
concrete walls ≥ 100 mm
masonry walls ≥ 115 mm

exposed masonry mounting

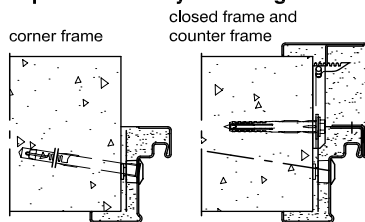


Flush installation

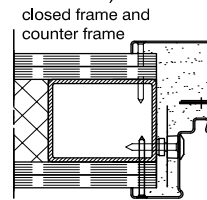


**Installation in autoclaved
aerated concrete walls**
(doors with top door closer)

exposed masonry mounting



**Installation in lightweight construction stud
walls (doors with top door closer)**



Please find a detailed installation overview in the planning-, installation- and maintenance manual for 1-leaf and 2-leaf doors.