



Fire resistant steel door T 30-1-FSA „Teckentrup 62 ST“

optionally with glazing

Text example:

T 30-1-FSA fire-resistant steel door tested in accordance with EN 1634-1 (DIN 4102). Single leaf door element. Door leaf 62 mm thick, flush mounted. Handing DIN right. Door leaf without hinge stamping. Corner frame 1.5 mm thick with 3-sided seal and bottom sill. Door leaf and frame galvanized and prime-coated in Grey white, similar RAL 9002. Mortice lock with latch lever in accordance with DIN 18250, prepared for profile cylinder. Plastic handle set, black, handle pivoted on bearing with tumbler insert (Bb) and 1 Bb key. 1 security bolt. 3D-hinges. "Teckentrup 62 ST" or equivalent.

(Compile and tender according to requirements. Please refer to technical data below for respective details. Updated 1st June 2017)

Technical data

Building authority approval	Z-6.20-1923 tested in accordance with EN 1634-1 (DIN 4102) for installation in internal walls	
Installation in	<ul style="list-style-type: none"> ▪ Masonry min. 115 mm ▪ Concrete min. 100 mm ▪ Lightweight construction stud walls min. 100mm ▪ Autoclaved aerated concrete walls*- min. 100 mm <ul style="list-style-type: none"> - as per DIN 4165 min. 115 mm - reinforced type min. 115 mm ▪ covered wood beams F 60 	
	* F ≥ 30 as per DIN 4102 part 4 or in accordance with the general building authority test certificate. For permissible walls refer to the installation details tab.	
Approved dimensions	Modular dimensions	W 625 – 1250 mm H 1750 – 2500 mm
Handing	DIN right or DIN left	
Door leaf	double skinned, flush mounted Door leaf thickness: 62 mm Sheet thickness: ≥ 0,75 Security bolt: min. 1 Insulation: Mineral fibre board	
Frame	1,5 mm thick, with 3-sided seal and floor mounting bracket. Installation of frame: screw-mounting. 3 per Side. Special equipment: block-, counter- or closed frame. Models with: block-, counter- or closed frame.	
Floor seals	Retractable floor seal, sliding threshold seal, Buffer strip and seal. Floor seal retrofittable.	
Surface	Door leaf and frame galvanized and prime coated, similar to RAL 9002 (Grey white).	
Hinges and closing devices	<ul style="list-style-type: none"> ▪ 2 x 3D-hinges ▪ 1 top door closer with slide rail 	
Fittings	<ul style="list-style-type: none"> ▪ Mortice lock with latch lever DIN 18250 ▪ Plastic handle set (black) ▪ Handle pivoted on bearing with tumbler insert (Bb) and 1 Bb key. 	
Glazing	Fire resistant glass "Promaglas 30", 17 mm thick with aluminium glass holding strips. Max. pane size 741 x 1658 mm. Round glazing (stainless steel glass holding strips) Ø 300, Ø 400 und Ø 500	

Also available in **STAINLESS STEEL**

Special equipment

- Handle sets / lever/knob sets:
 - plastic
 - light metal
 - stainless steel
 - with short plate or rose escutcheon (various makes)
- prepared for rose escutcheon
- locks:
 - Profile cylinder 40,5 + 30,5 mm
 - Panic locks
 - Block lock (mut be provided)
- Top door closer DIN EN 1154
 - head assembly
 - with slide rail
 - with locking device
 - with smoke detector
 - ITS 96 (hidden)
- electric door opener
- Integrated lock inspector (bolt contact)
- Integrated opening indicator (Reed contact)
- Revolving door drives
- Hold-open devices
- Floor seal retrofittable

Further qualifications
(Special equipment):



Smoke proof in accordance to 1634-3/
DIN 18095 with top door closer



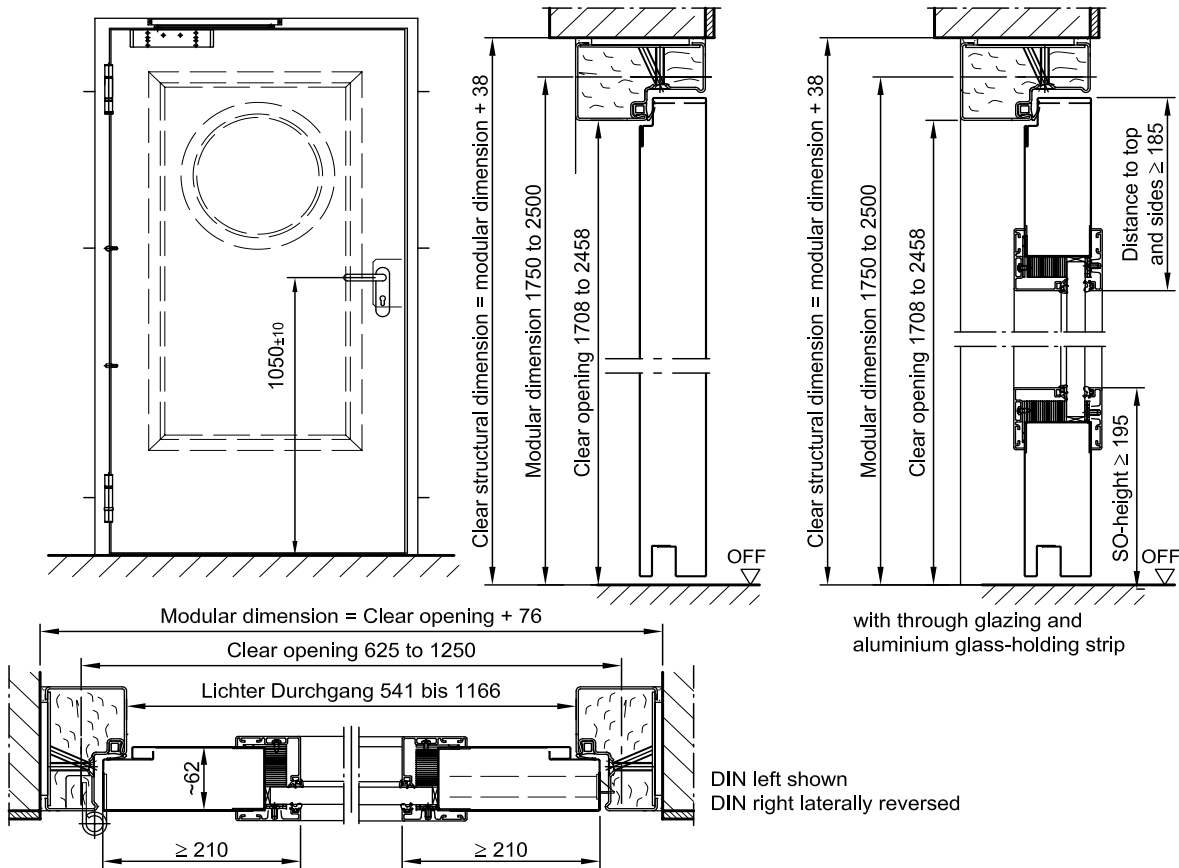
Sound insulated in acc. with
DIN EN 20140/717 Part 1
RW 35dB with retractable floor seal
RW 34 dB with sliding threshold seal
RW 35 dB with bottom buffer



Burglar resistant in
accordance with
DIN EN 1627 - RC 2 (WK 2)

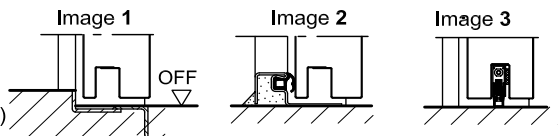
Fire resistant steel door
T 30-1-FSA „Teckentrup 62 ST“

optionally with glazing



Floor connections:

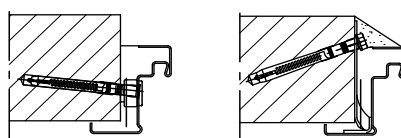
Image 1: With bottom buffer
Image 2: With bottom buffer/seal
Image 3: With bottom seal
(smoke-proof door with top door closer)



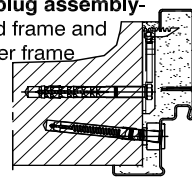
Installation in masonry/ concrete walls

concrete walls ≥ 100 mm
masonry walls ≥ 115 mm

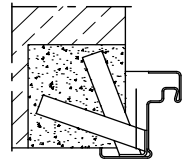
Wall plug assembly



Wall plug assembly- closed frame and counter frame



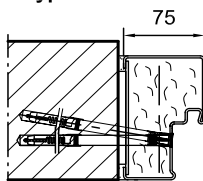
Wall anchor assembly



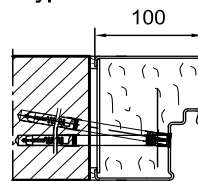
Installation with block frame Flush installation between

concrete walls ≥ 100 mm
masonry walls ≥ 115 mm

Type 4.1

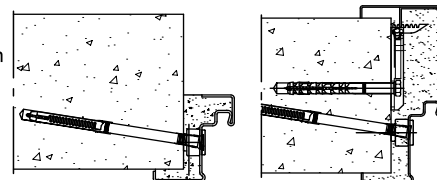


Type 4.2



Installation in autoclaved aerated concrete walls

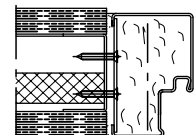
(doors with top door closer).
Made of autoclaved aerated concrete blocks or high precision units in acc. with DIN 4165 strength class 4 min. 115 mm or made of reinforced autoclaved aerated concrete slabs strength class 4. Wall thickness min. 115 mm



Corner-counter frame / Closed frame

Installation in lightweight construction

stud walls (doors with top door closer) Installation walls F30 in acc. with DIN 4102 Part 4 or in acc. with general building authority test certificate, wall thickness 100 mm. For permissible walls refer to the installation details tab



with **block frame**