

Fire-resistant steel door

T 30-1-FSA „Teckentrup DF“

optionally with glazing, optionally with top light/upper casing



Text example

Compile and tender according to requirements.
Please refer to technical data below for respective details.
Updated 1st June 2015



Position	No. of pieces	Item	Unit price €	Total price €
		T 30-1-FSA fire-proof steel door tested in accordance with DIN 4102. Single-leaf door element, type of handing DIN right. Door leaf 52 mm, thick rebated on 3-sides. Corner frame 2 mm thick, with 3-sided seal. Door leaf and frame galvanized and prime coated similar to RAL 9002 (Grey white). Mortice lock with latch lever in accordance with DIN 18250, prepared for profile cylinder. Black plastic handle set, handle pivoted on bearing with tumbler insert (Bb) and 1 Bb key. 2 security bolts. 1 spring hinge and 1 Ko hinge with ball bearings. "Teckentrup DF" or equivalent.		

Technical data

Building authority approval:

Z-6.20-2037 tested as per DIN 4102 for installation in internal walls

Installation in:	• Masonry walls	min. 115 mm
	• Concrete walls	min. 100 mm
	• Lightweight construction stud walls *	min. 100 mm
	• Autoclaved aerated concrete walls	
	· as per DIN 4165	min. 175\200 mm
	· reinforced type	min. 175\200 mm

* min. F90 in acc. DIN 4102 part 4 or in acc. with general building authority test certificate refer to the installation data details tab.

Approved dimensions:

Modular dimensions:	
width:	625 – 1350 mm
height:	1750 – 3000 mm
with upper casing (door leaf 62 mm):	
height:	4000 mm

Type of handing:

DIN right or DIN left

Door leaf:

Double-skinned thick rebated on 3 sides (upper casing rebated on 3 sides or made of frame profiles)
Door leaf thickness: 52 mm up to 1350 x 2500 mm
62 mm above 1350 x 2500 mm
62 mm with upper casing
Sheet thickness: 1 or 1.5 mm
Security bolts: 2-3
Special equipment: upper casing sheet thickness: 1.5 mm

Frame:

Corner frame 2 mm thick with 3-sided seal and bottom sill. With 3 welded-on wall anchor plugs on each side.
Fire protection strip in the upper part.
Special equipment: block, counter or closed frame

- Counter frame or closed frame required for installation in **lightweight construction stud walls**
- Installation in **autoclaved aerated concrete** without counter frame for doors up to 1250 x 2250 mm without glazing.

Surface:

galvanized and prime coated door leaf/frame similar to RAL 9002 (Grey white)

Hinges and closing devices:

- 1 KO hinge with ball bearings, 1 spring hinge or
- 2 KO hinges with ball bearings, 1 top door closer

Fittings:

- Mortice lock with latch lever as per DIN 18250 prepared for profile cylinder
- Black plastic handle set.
Handle pivoted on bearing, with tumbler insert (Bb) and 1 Bb key

Glazing:

Fire-resistant glass "Promaglas 30", 17 mm thick with steel glass holding strips galvanized and prime coated, Grey white similar to RAL 9002. Max. panel size 1005 x 2167 mm. Round glazing Ø 300, Ø 400, Ø 500.

Also available in **STAINLESS STEEL**

Special equipment:

steel glass holding strips with additional aluminium cover strips, stainless steel round glazing holding strips

Special equipment:

- Handle sets\Lever\Knob sets:
 - plastic
 - light metal
 - stainless steel
 - with short plate or rose escutcheon (various makes)
- Prepared for rose escutcheon
- Locks:
 - profile cylinder 40.5 + 30.5 mm (door leaf 52 mm)
 - profile cylinder 45.5 + 35.5 mm (door leaf 62 mm)
 - panic locks
 - block lock (must be provided)
- Panic bar
- Top door closer DIN EN 1154
 - head assembly
 - with slide rail
 - with locking device
 - with smoke detector
 - integrated door closer ITS 96 (62 mm) BS
- For doors with glazing with top door closer
- For installation in lightweight construction stud walls with top door closer
- For installation in autoclaved aerated concrete walls with top door closer
- Bottom door closer DIN EN 1154
- Electric door opener
- Integrated lock inspector (bolt contact)
- Integrated opening indicator (Reed contact)
- Revolving door drives
- Hold-open devices
- Floor seals

Standard sizes:

(Special sizes: from 625 x 1750 up to 1350 x 3000)

	Ordering size (modular dim.) width x height	Clear passage size (corner frame) width x height
Standard sizes:	750 x 2000	666 x 1958
	2125	2083
	875 x 1875	791 x 1833
	2000	1958
	2125	2083
	1000 x 2000	916 x 1958
	2125	2083
	625 x 1750	1041 x 1958
	1125 x 2000	2083
	2125	2083
	1250 x 2000	1166 x 1958
	2125	2083
	2250	2208

Further qualifications (special version):



- **Smoke-proof** as per DIN 18095 with top door closer for solid and lightweight construction stud walls



- **Sound insulated** as per DIN EN 20140/717 part 1 **RW 38 dB** with retractable bottom seal **RW 42 dB** with buffer strip

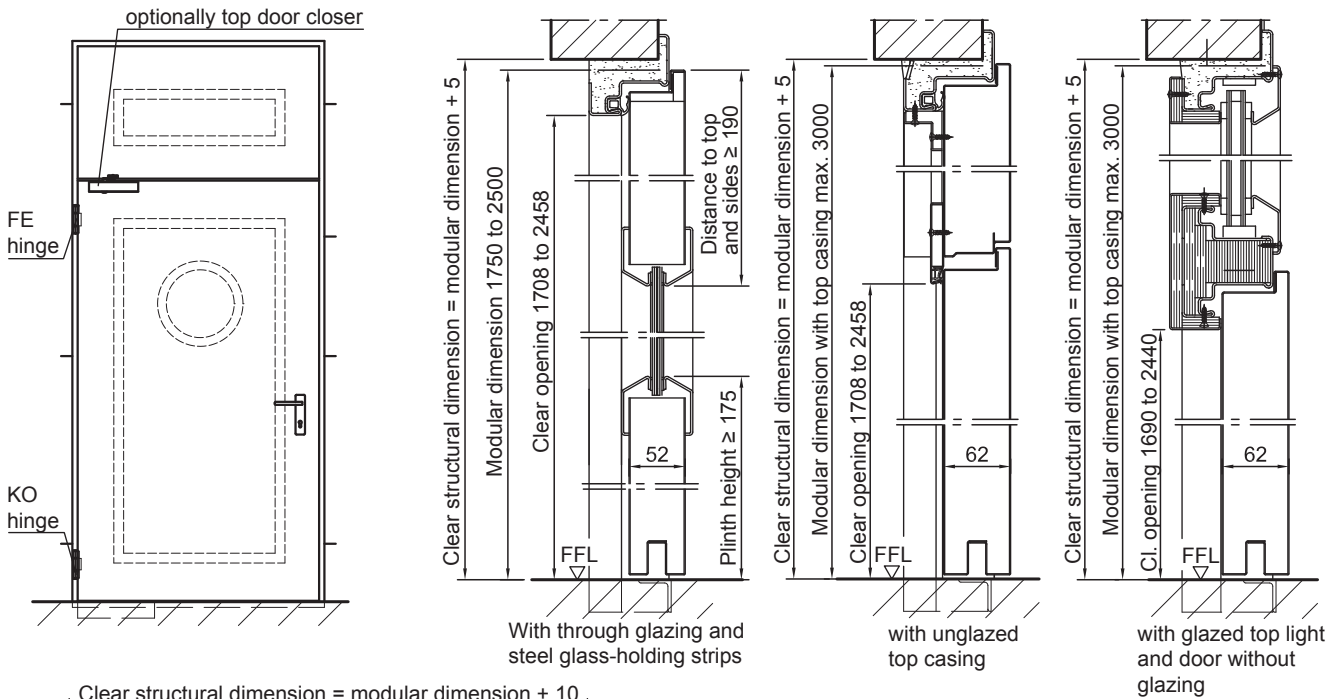


- **Burglar-resistant** as per DIN ENV 1627 **WK2** (up to a width of 1250 x height of 2500 mm)

Fire-resistant steel door

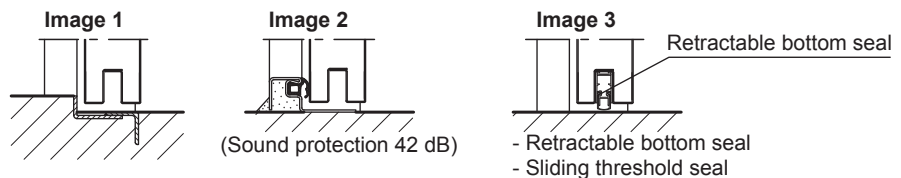
T 30-1-FSA „Teckentrup DF“

optionally with glazing, optionally with top light/upper casing



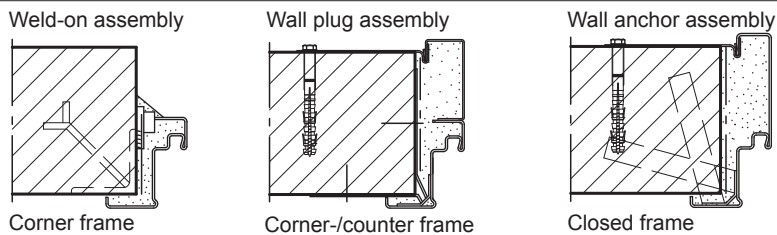
Floor connections:

Image 1: With bottom buffer
 Image 2: With bottom buffer/seal
 Image 3: With bottom seal (smoke-proof door with top door closer)



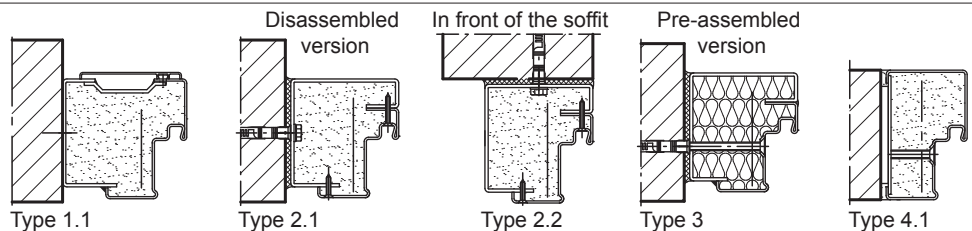
Installation in masonry/ concrete walls

concrete walls ≥ 100 mm
 masonry walls ≥ 115 mm



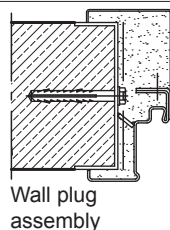
Installation with block frame

Flush installation between concrete walls ≥ 100 mm
 masonry walls ≥ 115 mm



Installation in autoclaved aerated concrete walls

(doors with top door closer)
 Made of aerated concrete blocks or precision units as per DIN 4165, strength class 4 min. 175/200 mm or made of reinforced aerated concrete slabs, strength class 4, wall thickness min. 175/200 mm



Installation in Lightweight construction stud walls

(doors with top door closer)
 F90 as per DIN 4102-4 or in accordance with general building authority approval, wall thickness min. 100 mm.
 For permissible walls refer to the installation details tab

