



Fire-resistant all-glass door T 30-1-FSA „Teckentrup GL“

Frameless glass door, with retractable bottom seal

Text example:

T 30-1-FSA All-glass door tested in acc. with EN 1634-1. Frameless single-leaf glass-door. Door leaf 27 mm thick. Corner frame 1,5 mm thick with 3-sided rebated seal, without floor recess. fitting covers made from stainless steel 1.4301, grinded with grain size 240. Frame galvanized and prime coated in traffic white, similar to RAL 9016. Standard glass-door lock with latch lever prepared for PC in acc. with DIN 18250. FP-round handle set, stainless steel. 2 VN-all-glass-fire-protection-hinges with stainless steel cover. Dorma TS 93 system with slide rail. Stainless steel type mounted on hinge side. „Teckentrup GL“ or equivalent.

(Compile and tender according to requirements. Please refer to technical data below for respective details. Updated 01.02.2021)

[Text T30-1 GL online](#)

Technical data

Technical approval	Z-6.20-2184 tested in accordance with EN 1634-1 for installation in internal Walls	Special equipment	<ul style="list-style-type: none"> ▪ Panic bar ▪ Locks <ul style="list-style-type: none"> - Panic locks ▪ Profil cylinder 55 + 26.5 mm ▪ Top door closer <ul style="list-style-type: none"> - hinge-/opposite hinge side ▪ Door drive ▪ Film coating on the glass 																																		
Installation in	<ul style="list-style-type: none"> ▪ Masonry min. 115 mm ▪ Concrete min. 100 mm ▪ Lightweight construction stud wall* min.100 mm ▪ Autoclaved aerated concrete (AAC) <ul style="list-style-type: none"> - AAC stones min. 115 mm - Reinforced AAC min. 115 mm <p>* Assembly walls ≥ F 90 in acc. with general building authority test certificate. Approved wall types see register "installation details"</p>																																				
Approved dimensions	Modular dimension W 625 - 1250 mm H 1750 - 2500 mm																																				
Type of handling	DIN right or DIN left																																				
Door leaf (double skinned)	Door leaf thickness: approx. 27 mm																																				
Frame	Corner frame 1.5 mm thickness with 3-sided seal, without floor recess. Fastening by exposed masonry mounting. Special equipment: <ul style="list-style-type: none"> ▪ Block frame, counter frame ▪ Closed frame ▪ Block frame type 4.1 or block frame type 4.2 																																				
Bottom seal	▪ Standard with retractable bottom seal																																				
Surface	<ul style="list-style-type: none"> ▪ Stainless steel fitting covers 1.4301, smooth 240 grain size ▪ frame galvanized and prime coated, traffic white similar to RAL 9016 Special equipment: <ul style="list-style-type: none"> ▪ Frame in RAL of choice ▪ Stainless steel frame 																																				
Hinges and closing devices	<ul style="list-style-type: none"> ▪ 2 VN- all- glass-fire-protection-hinges with stainless steel cover ▪ Dorma TS 93 with slide rail in Contur-design. Stainless steel, mounted on hinge side. 																																				
Fitting	<ul style="list-style-type: none"> ▪ Standard glass door lock with lever/knob prepared for profile cylinder ▪ FP- round handle set V2A fire-resistant stainless steel round handle set 																																				
		<table border="1"> <thead> <tr> <th></th> <th>Ordering dimensions / Modular dimension width x height</th> <th>Clear passage sizes (corner frame) width x height</th> </tr> </thead> <tbody> <tr> <td rowspan="3">Standard sizes</td> <td>875 x 1875</td> <td>791 x 1833</td> </tr> <tr> <td>2000</td> <td>1958</td> </tr> <tr> <td>2125</td> <td>2083</td> </tr> <tr> <td rowspan="3"></td> <td>1000 x 2000</td> <td>916 x 1958</td> </tr> <tr> <td>2125</td> <td>2083</td> </tr> <tr> <td>2250</td> <td>1041 x 1958</td> </tr> <tr> <td rowspan="3"></td> <td>2500</td> <td>2083</td> </tr> <tr> <td>1125 x 2000</td> <td>1166 x 1958</td> </tr> <tr> <td>2125</td> <td>2083</td> </tr> <tr> <td rowspan="3"></td> <td>1250 x 2000</td> <td>2208</td> </tr> <tr> <td>2125</td> <td></td> </tr> <tr> <td>2250</td> <td></td> </tr> <tr> <td></td> <td>2500</td> <td></td> </tr> </tbody> </table>		Ordering dimensions / Modular dimension width x height	Clear passage sizes (corner frame) width x height	Standard sizes	875 x 1875	791 x 1833	2000	1958	2125	2083		1000 x 2000	916 x 1958	2125	2083	2250	1041 x 1958		2500	2083	1125 x 2000	1166 x 1958	2125	2083		1250 x 2000	2208	2125		2250			2500		
	Ordering dimensions / Modular dimension width x height	Clear passage sizes (corner frame) width x height																																			
Standard sizes	875 x 1875	791 x 1833																																			
	2000	1958																																			
	2125	2083																																			
	1000 x 2000	916 x 1958																																			
	2125	2083																																			
	2250	1041 x 1958																																			
	2500	2083																																			
	1125 x 2000	1166 x 1958																																			
	2125	2083																																			
	1250 x 2000	2208																																			
	2125																																				
	2250																																				
	2500																																				

Further qualifications
(Special equipment):



Smoke proof
for solid walls and lightweight construction stud walls

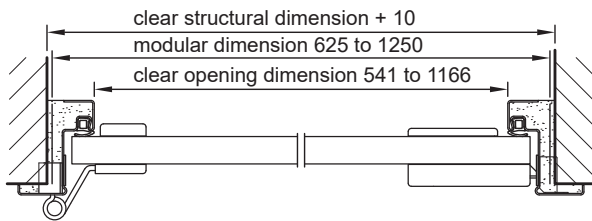
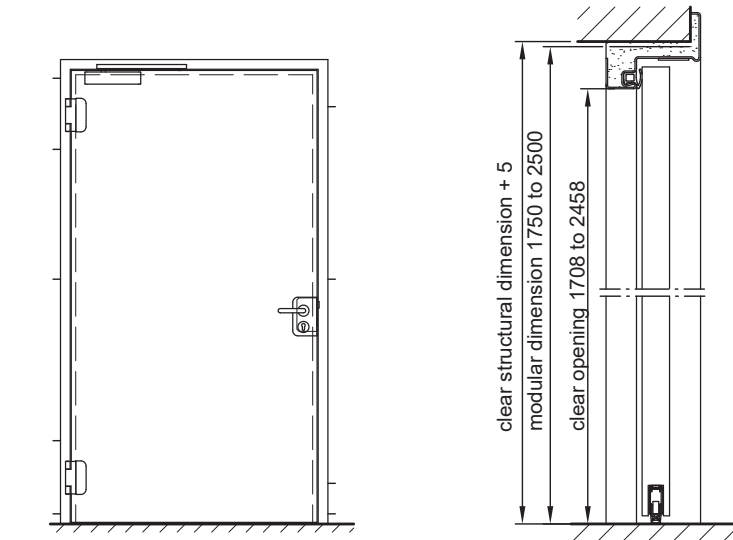


Sound insulated
RW 35dB with retractable bottom seal



Fire-resistant all-glass door T 30-1-FSA „Teckentrup GL“

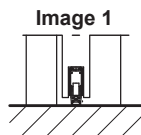
Frameless glass door, with retractable bottom seal



DIN left shown
DIN right laterally reversed

Floor connections

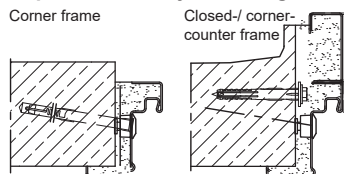
Image 1: with retractable bottom seal



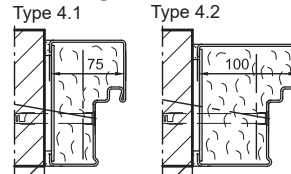
Installation in masonry- /concrete walls

concrete walls ≥ 100 mm
masonry walls ≥ 115 mm

Exposed masonry mounting



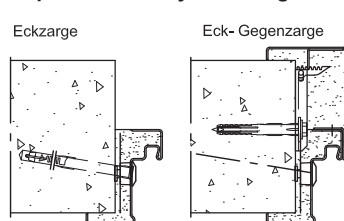
Flush edge installation



Installation in autoclaved aerated concrete walls

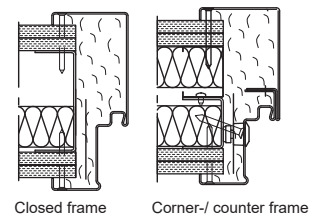
Made of auto. aerated
concrete blocks or
reinforced auto.aerated
concrete thickness
min. 115 mm.

Exposed masonry mounting



Fitting in assembly walls

(lightweight construction
stud walls)
assembly walls \geq F90 in
acc. with DIN 4102
Part 4 or in acc. with
general building authority
test certificate. Approved
wall types see register
„installation details“.



Please find a detailed installation
overview in the planning-, installation-
and maintenance manual for 1-leaf
and 2-leaf all-glass doors.