



Fire-resistant steel door T 30-2-FSA „Teckentrup 42“

Door with thin rebate

Text example:

T 30-2-FSA Steel-Fire-resistant door tested in accordance with EN 1634-1. Double leaves door element. Active leaf DIN right. Flush mounted door leaf, 42 mm thick, 3-sided rebated. Corner frame 2.0 mm with 3-sided seal, without floor recess. Door leaf and frame galvanised and galvanised and prime-coated, grey-white, similar to RAL 9002. Active leaf with mortise lock prepared for profile cylinder, FP round handle set, black (plastic). Handle pivoted on bearing with tumbler (Bb) insert and 1 Bb key. Inactive leaf with espagnolette bolt lock. per leaf 2 construction hinges with ball bearing and 1 top door closer. 1 door selector. „Teckentrup 42“ or equivalent.

(Compile and tender according to requirements. Please refer to technical data below for respective details. Updated 01.03.2021)

[Text T30-2 42 online](#)

Technical data

Technical approval	Z-6.20-1956 tested in accordance with EN 1634-1 (DIN 4102) for installation in internal walls Heat insulation value tested in accordance with EN ISO 12567-1, $U_p = 1,7 \text{ W/m}^2\text{K}$	Fittings	Active leaf: <ul style="list-style-type: none"> Mortise lock prepared for profile cylinder FFP round handle set black (plastic), handle pivoted on bearing with tumbler(Bb) insert and 1 Bb-key Inactive leaf: <ul style="list-style-type: none"> Espagnolette bolt lock with standard top and bottom locking
Installation in	<ul style="list-style-type: none"> Masonry min. 115 mm Concrete wall min. 100 mm Lightweight construction stud wall* min. 88 mm Autoclaved aerated concrete (AAC) <ul style="list-style-type: none"> AAC stones min. 115 mm Reinforced AAC walls min. 115 mm Concealed steel- and wooden supports F60 <p>* min. $\geq F 30$ n acc. with DIN 4102 Part 4 or in acc. with general building authority test certificate. Approved wall types see register "installation details".</p>	Special equipment	<ul style="list-style-type: none"> Handle sets/lever/knob sets: <ul style="list-style-type: none"> Plastic Light metal Stainless steel With short plate or rose escutcheon (various makes) Prepared for rose escutcheon Panic bar Locks <ul style="list-style-type: none"> Panic locks Snap bolt with snap bolt handle on opposite hinge side Block lock (must be provided) Profile cylinder 30,5 + 30,5 mm Top door closer DIN EN 1154 <ul style="list-style-type: none"> Hinge/opposite hinge side With slide rail With hold open device With smoke detector Lock control (bolt contact) integrated Opening detector (reed contact) integrated Hold open devices
Approved dimensions	Modular dimension W1375 – 2250 mm H 1750 – 2250 mm		
Type of handling	Active leaf DIN right or DIN left		
Door leaf (double-skinned)	Rebate type, 3-sided rebated thin rebate Thickness: 42 mm Sheet thickness: 1.0 mm Security bolt: min. 2		
Frame	Corner frame 2.0 mm thickness with 3-sided seal, without floor recess fitted. Fastening by exposed masonry mounting. Special equipment: <ul style="list-style-type: none"> Block frame Counter frame Closed frame Frame with bottom floor recess 		
Floor closure	<ul style="list-style-type: none"> Retractable bottom seal Sliding threshold seal Buffer strip and seal Retrofittable bottom seal 		
Surface	Door leaf/frame galvanised and prime-coated, grey-white similar to RAL 9002		
Hinges and closing devices	<ul style="list-style-type: none"> 2 construction hinges with ball bearing per leaf 2 top door closer DIN EN 1154 1 door selector Compensation rings for height adjustment 		
		Ordering dimensions	Clear passage size
		Modular dimension	(corner frame)
		width x height	width x height
Standard sizes		1500 x 2000	1430 x 1965
(Stock sizes)		2125	2090
Steel door		1750 x 2000	1680 x 1965
		2125	2090
		2000 x 2000	1930 x 1965
		2125	2090
		2125 x 2125	2055 x 2090
		2250 x 2250	2180 x 2215

(Special sizes: from 1375 x 1750 up to 2250 x 2250)

Further qualifications
(Special equipment):



Smoke proof in acc. with EN 1634-3/ DIN 18095 for solid walls and lightweight construction stud walls

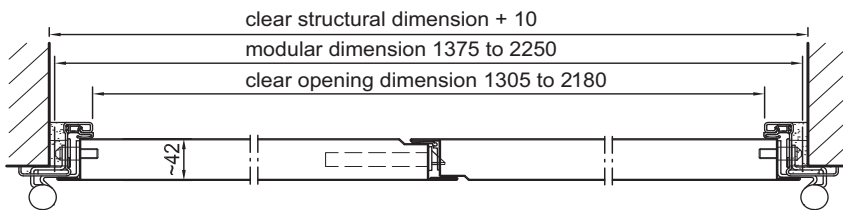
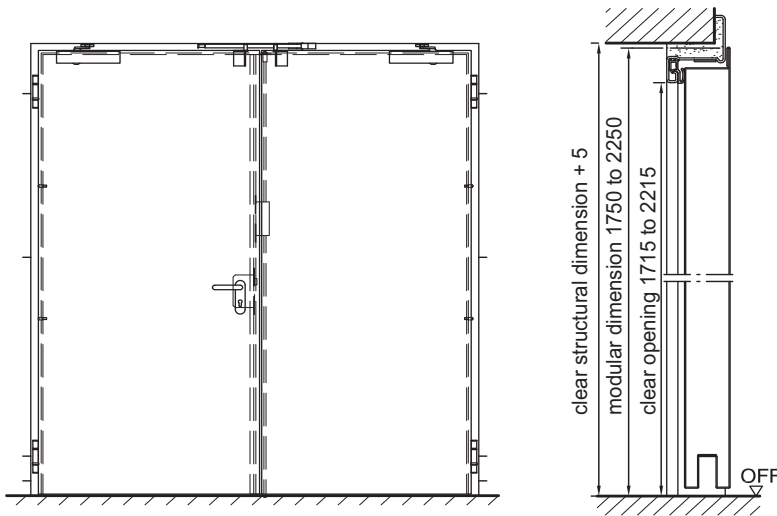


Sound insulated in acc. with DIN EN 20140/717 Part 1
RW 37 dB with buffer strip and seal
RW 37 dB with retractable bottom seal



Fire-resistant steel door T 30-2-FSA „Teckentrup 42“

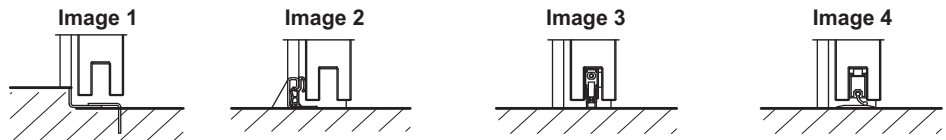
Door with thin rebate



DIN left shown
DIN right laterally reversed

Floor connections

- Image 1:** with retractable bottom seal
- Image 2:** with bottom buffer/seal
- Image 3:** with retractable bottom seal (smoke protection with TDC)
- Image 4:** with sliding threshold



Installation in masonry- /concrete walls

concrete walls ≥ 100 mm
masonry walls ≥ 115 mm

Exposed masonry mounting

Corner frame

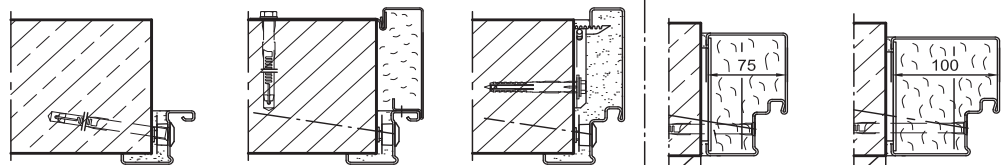
Corner- /
counter frame

Closed frame

Flush edge installation

Type 4.1

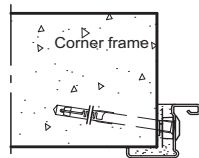
Type 4.2



Installation in autoclaved aerated concrete walls

Made of auto. aerated
concrete blocks or
reinforced auto.aerated
concrete thickness
min. 115 mm.

Exposed masonry mounting

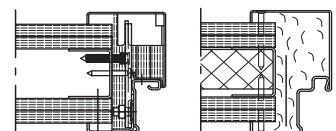


Fitting in assembly walls

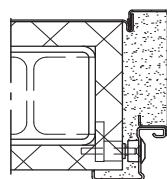
(lightweight construction
stud walls) assembly walls
 $\geq F30$ in acc. with general
building authority test certificate.
Wall thickness min. 88 mm
Approved wall types
see register „installation details“.

Corner-/
counter frame

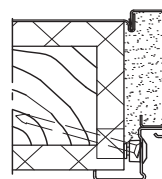
Closed frame



Installation in concealed steel support F60



Installation in concealed wooden support F60



Please find a detailed installation
overview in the planning-, installation-
and maintenance manual for 1-leaf
and 2-leaf doors.