



Fire-resistant steel door T 30-2-FSA „Teckentrup 62 ST“

flush mounted, optionally with glazing

Text example:

T 30-2-FSA fire-proof steel door tested in accordance with EN 1634-1 (DIN 4102). Double-leaf door element, type of handing DIN right. Flush-closing door leaf without hinge stamping, 62 mm thick. Corner frame 1.5 mm thick with 3-sided seal and bottom sill. Leaf and frame galvanized and prime coated in Grey white, similar to RAL 9002. Active door leaf with mortice lock with latch lever, prepared for profile cylinder in accordance with DIN 18250. FS round handle set black (plastic), handle pivoted on bearing, with tumbler insert (Bb) and 1 Bb key. Inactive door leaf with espagnolette bolt and standard top locking. 2 3D-hinges per leaf. 2 security bolts. Top door closer with slide rail. "Teckentrup 62 ST" or equivalent.

(Compile and tender according to requirements. Please refer to technical data below for respective details. Updated 1. July 2017.)

Technical data

Also available in **STAINLESS STEEL**

Building authority approval:	Z-6.20-1923 tested as per DIN 4102 (EN1634-1) for installation in internal walls.		Fittings	Active door leaf: <ul style="list-style-type: none"> ▪ Mortice lock with latch lever prepared for profile cylinder as per DIN 18250. FS round handle set black (plastic), handle pivoted on bearing, with tumbler insert (Bb) and 1 Bb key Inactive door leaf: <ul style="list-style-type: none"> ▪ Inactive leaf with espagnolette bolt and standard top locking
Installation in	<ul style="list-style-type: none"> ▪ Masonry wall min. 115 mm ▪ Concrete wall min. 100 mm ▪ Lightweight construction stud wall min. 100 mm ▪ Autoclaved aerated concrete wall <ul style="list-style-type: none"> - as per DIN 4165 min. 115 mm - reinforced type min. 115 mm ▪ covered wood beams <p>* F ≥ 30 as per DIN 4102 part 4 or in accordance with the general building authority test certificate. For permissible walls refer to the installation details tab.</p>		Glazing	Fire resistant glass "Promaglas 30", 17 mm thick. Glazing area angled with aluminium glass holding strips. Max. pane size 904x2150 mm. round glazing Ø 300, Ø 400 and Ø 500 with steel glass holding strips galvanized and prime-coated, grey-white similar to RAL 9002.
Approved dimensions	Modular dimension:	W 1375 – 2500 mm H 1750 – 2500 mm	Special equipment	Handle sets / Lever/Knob sets: - plastic - light metal - stainless steel - with short plate or rose escutcheon (various makes) <ul style="list-style-type: none"> ▪ prepared for rose escutcheon ▪ locks <ul style="list-style-type: none"> - profile cylinder 40.5 + 40.5 mm - panic locks block lock (must be provided) ▪ Top door closer DIN EN 1154 <ul style="list-style-type: none"> - head assembly - with slide rail - with locking device - with smoke detector - ITS 96 (hidden) ▪ Electric door opener ▪ Integrated lock inspector (bolt contact) ▪ Integrated opening indicator (Reed contact) ▪ Hold-open devices ▪ Floor seals are retrofittable
Handing	DIN right or DIN left			
Door leaf	Double-skinned, Door leaf thickness: Sheet thickness: Security bolts per leaf: Insulation:	flush mounted 62 mm ≥ 0,75 per leaf 2 mineral fibre board		
Frame	Corner frame 1.5 mm thick, with 3-sided seal. Installation of frame: screw-mounting. 3 per Side. Special equipment: block-, counter- or closed frame			
Floor seals	<ul style="list-style-type: none"> ▪ Retractable floor seal ▪ sliding threshold seal ▪ Buffer strip and seal Floor seal retrofittable			
Surface	Door leaf/Frame galvanized and prime coated, similar to RAL 9002 (Grey white).			
Hinges and closing devices	<ul style="list-style-type: none"> ▪ 2 x 3D-hinges per leaf ▪ Top door closer with slide rail per leaf ▪ 1 door selector ▪ Compensation rings for height adjustment 			

Further Qualifications
(Special equipment):



Sound insulated in acc. with DIN EN 20140/717 Part 1
 RW 36 dB with retractable floor seal
 RW 36 dB with sliding threshold seal
 RW 36 dB with buffer strip and seal

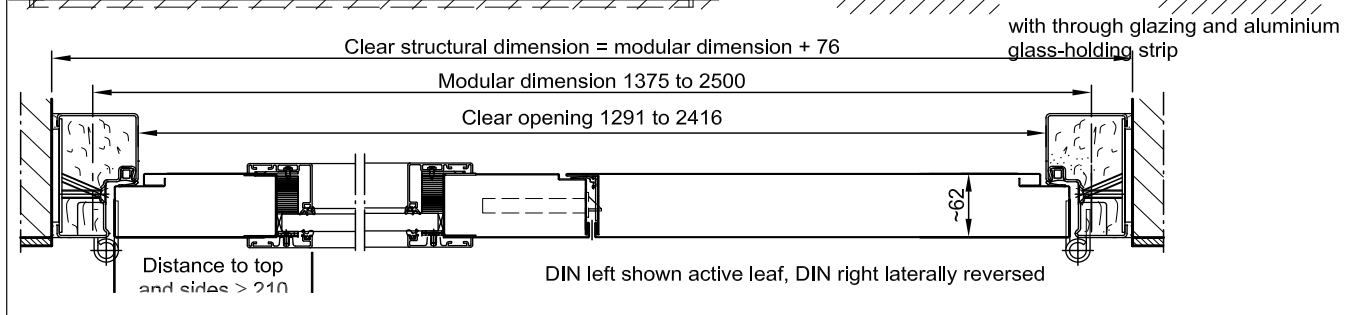
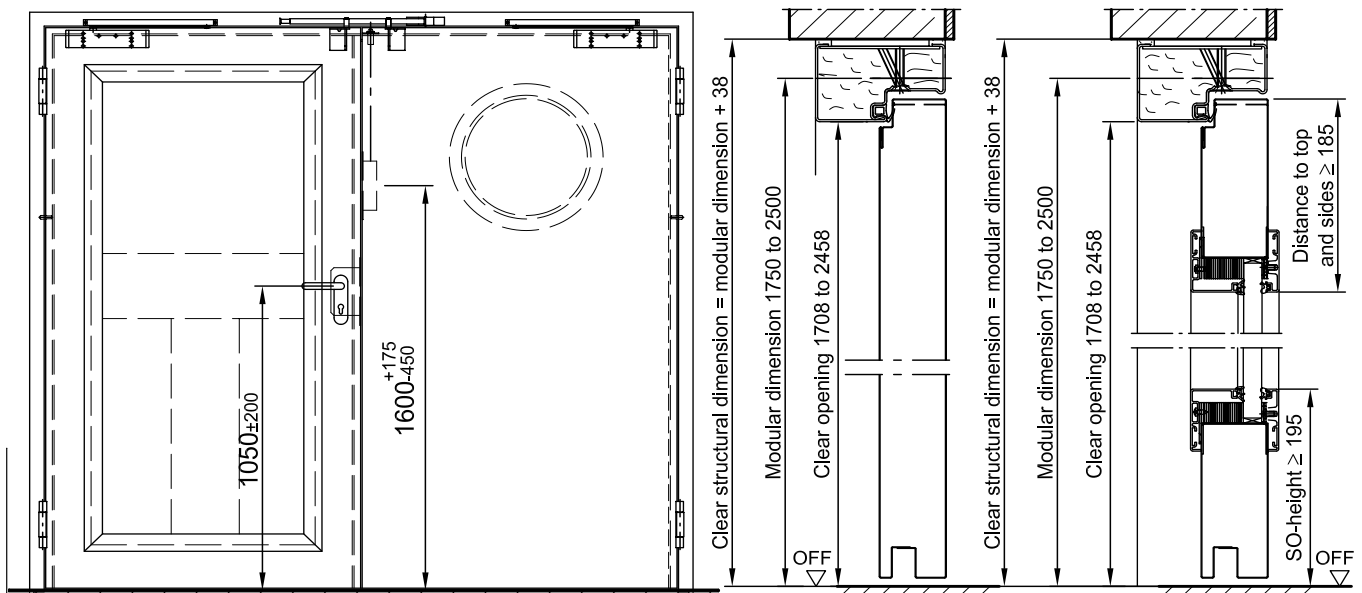


Burglar resistant in accordance with - DIN EN 1627 RC 2 (WK 2)



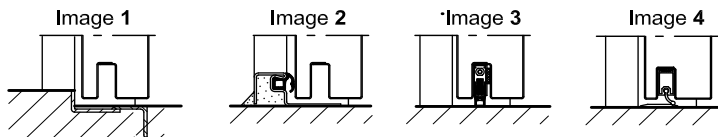
Fire-resistant steel door T 30-2-FSA „Teckentrup 62 ST“

flush mounted , optionally with glazing



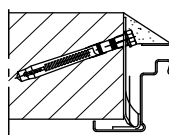
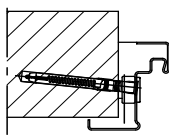
Floor connections:

- Image 1: With bottom buffer
- Image 2: With bottom buffer/seal
- Image 3: With bottom seal (smoke-proof door with top door closer)
- Image 4: sliding threshold seal

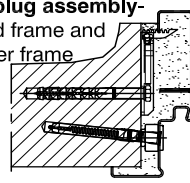


Installation in masonry/ concrete walls
concrete walls ≥ 100 mm
masonry walls ≥ 115 mm

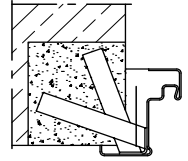
Wall plug assembly



Wall plug assembly- closed frame and counter frame

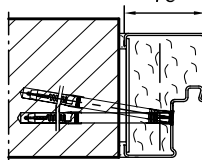


Wall anchor assembly

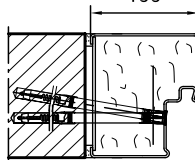


Installation with block frame Flush installation between
concrete walls ≥ 100 mm
masonry walls ≥ 115 mm

Type 4.1



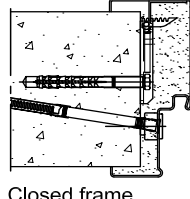
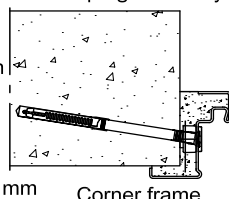
Type 4.2



Installation in autoclaved aerated concrete walls

(doors with top door closer).
Made of autoclaved aerated concrete blocks or high precision units in acc. with DIN 4165 strength class 4 min. 115 mm or made of reinforced autoclaved aerated concrete slabs strength class 4. Wall thickness min. 115 mm

Wall plug assembly

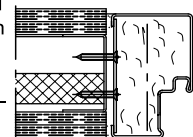


Corner frame

Closed frame

Installation in lightweight construction stud walls (doors with top door closer)

Installation walls F30 in acc. with DIN 4102 Part 4 or in acc. with general building authority test certificate, wall thickness 100 mm. For permissible walls refer to the installation details tab



with block frame Type 4.1