

# Fire-resistant steel door

## T 30-2-FSA „Teckentrup DF“

optionally with glazing, optionally with top light/upper casing



### Text example

Compile and tender according to requirements.  
Please refer to technical data below for respective details.  
Updated 1<sup>st</sup> June 2015

Position	No. of pieces	Item	Unit price €	Total price €
		T 30-2-FSA fire-proof steel door tested as per DIN 4102. Double-leaf door element. Active door leaf DIN right. Door leaf 52 mm, thick rebated on 3-sides. Corner frame 2.0 mm thick, with 3-sided seal. Leaf and frame galvanized and prime coated in Grey white, similar to RAL 9002. Active door leaf with mortice lock with latch lever as per DIN 18250. FS-Round handle set, black (plastic), handle pivoted on bearing, with tumbler insert (Bb) and 1 Bb key. Inactive door leaf with central rebate profile, with seal (leaf 52 mm), rebate lever bolt, top locking. 2 KO-hinges with ball bearings per door leaf. 1 top door closer as per DIN EN 1154. 1 door selector. 2-3 security bolts per leaf. "Teckentrup DF" or equivalent.		



### Technical data

#### Building authority approval:

Z-6.20-2037 tested in acc. with DIN 4102 for installation in internal walls

- Installation in:**
- Masonry min. 115 mm
  - Concrete min. 100 mm
  - Lightweight construction stud wall\* min. 100 mm
  - Autoclaved aerated concrete
    - as per DIN 4165 min. 175/200 mm
    - reinforced type min. 175/200 mm

\* F 90 as per DIN 4102-4 or in acc. with general building authority test certificate. For permissible walls refer to the installation detail tab.

**Approved dimensions:** Modular dimensions:  
width: 1375 – 3000 mm  
height: 1750 – 3000 mm

**With upper casing** (leaf 62 mm):  
height: 4000 mm

**Handing:** Active door leaf DIN right or DIN left

**Door leaf:** Double-skinned thick rebated on 3 sides (Upper casing rebated on 3 sides or made of frame profiles)  
Door leaf thickness: 52 mm up to 2500 x 2500 mm  
62 mm above 2500 x 2500 mm door leaf with upper casing  
Sheet thickness: 1 mm (1.5 mm)  
Security bolts per leaf: 2-3  
Insulation: mineral fibre board

**Frame:** Corner frame 2 mm thick with 3-sided seal and bottom sill. With 3 welded-on wall anchors per side. Fire protection strip in the upper part.

**Special equipment:**  
Block, counter or closed frame

- Counter frame or closed frame required for installation in **lightweight construction stud walls**
- Installation in **autoclaved aerated concrete** without counter frame for doors up to 2500 x 2250 mm without glazing

**Surface:** Galvanized and prime coated door leaf/frame similar to RAL 9002 (Grey white)

**Hinges and closing devices:**

- 4 KO- hinges with ball bearings
- 2 top door closers DIN EN 1154
- 1 door selector

**Fittings:**

Active door leaf:

- Mortice lock with latch lever as per DIN 18250, prepared for profile cylinder
- Black plastic handle set, handle pivoted on bearing, with tumbler insert (Bb) and 1 Bb key

Inactive door leaf:

- Central rebate profile with seal (door leaf 52 mm)
- Espagnolette bolt lock, top locking

**Glazing:** Fire-resistant glass "Promaglas 30", 17 mm thick with steel glass holding strips galvanized and primed, Grey white similar to RAL 9002. Max. pane size 900 x 2100 mm, round glazing Ø 300, Ø 400, Ø 500  
**Special equipment:** steel glass holding strips with additional aluminium cover strips, round glazing - stainless steel glass-holding strips

- Special equipment:**
- Handle sets\Lever\Knob sets:
    - plastic
    - stainless steel
    - with short plate or rose escutcheon (various makes)
  - Prepared for rose escutcheon
  - Locks:
    - profile cylinder 40.5 + 30.5 mm (leaf 52 mm)
    - profile cylinder 45.5 + 35.5 mm (leaf 62 mm)
    - panic locks, block lock (must be provided)
  - Panic bar handle
  - Top door closer DIN EN 1154
    - head assembly
    - with locking device
    - with door selector
    - integrated door closer ITS 96 (62 mm) BS
  - Bottom door closer DIN EN 1154
  - Electric door opener
  - Integrated lock inspector (bolt contact)
  - Integrated opening indicator (Reed contact)
  - Revolving door drives
  - Floor seals
  - Hold-open devices

	Ordering dimensions (modular dimensions) width x height	Clear passage size width x height
<b>Standard sizes:</b>	1500 x 2000	1416 x 1958
	2125	2083
	1750 x 2000	1666 x 1958
(Special sizes: from 1375 x 1750 up to 3000 x 3000)	2125	2083
	2500	2458
	2000 x 2000	1916 x 1958
	2125	2083
	2125 x 2125	2041 x 2083
	2250 x 2250	2166 x 2208
	2500 x 2500	2416 x 2458

#### Further qualifications (special equipment):



- **Smoke proof** as per DIN 18095 for solid and lightweight construction stud walls



- **Sound insulation** as per DIN EN 20140 (up to width 3000 x height 3000 mm w/o glazing and without upper casing)

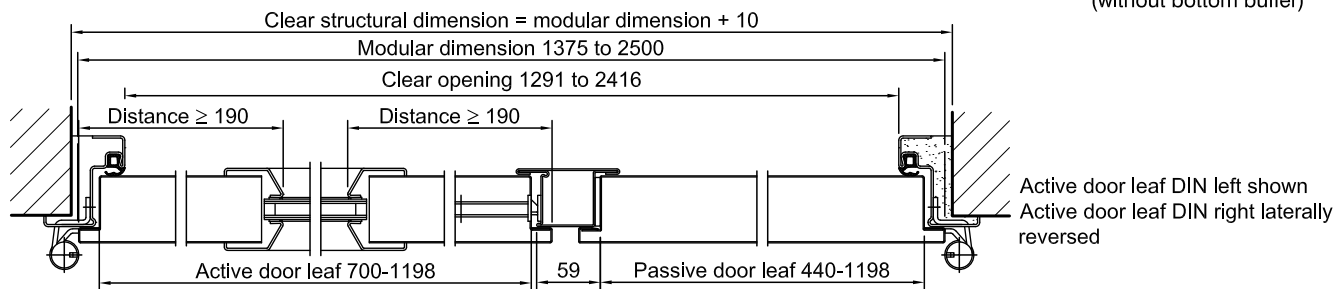
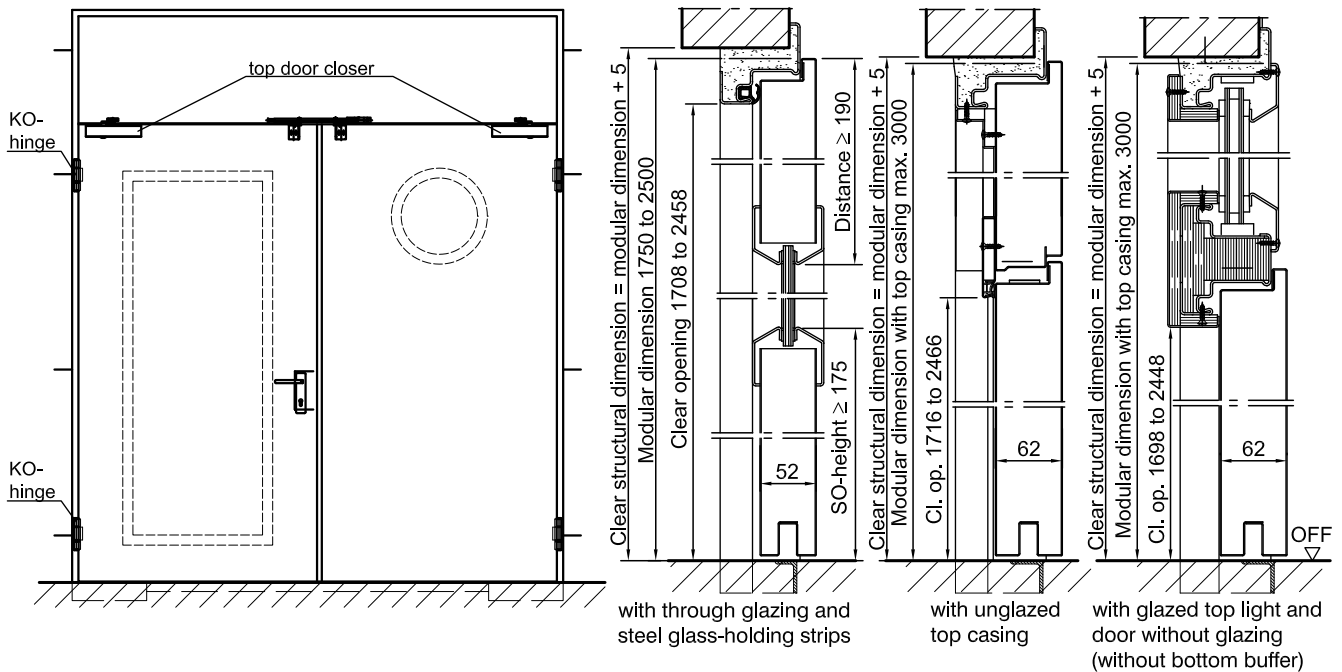
door 52/62 mm:

**Rw 40dB /Rw 42dB** with bottom buffer and seal  
**Rw 37dB /Rw 38dB** with retractable bottom seal

# Fire-resistant steel door

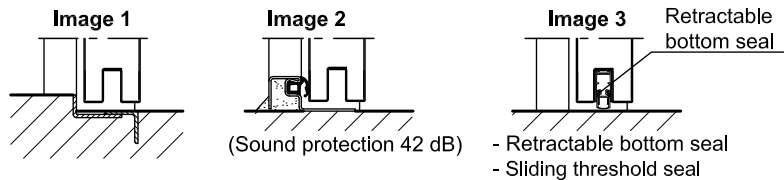
## T 30-2-FSA „Teckentrup DF“

optionally with glazing, optionally with top light/upper casing



### Floor connections:

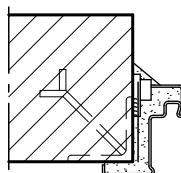
Image 1: With bottom buffer  
 Image 2: With bottom buffer/seal  
 Image 3: With bottom seal (smoke-proof door with top door closer)



### Installation in masonry/ concrete walls

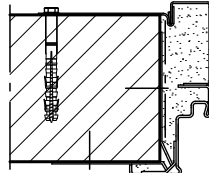
concrete walls  $\geq 100$  mm  
 masonry walls  $\geq 115$  mm

#### Weld-on assembly



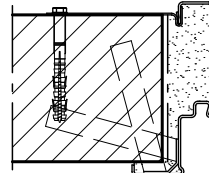
(Corner frame)

#### Wall plug assembly



(Corner frame with counter frame)

#### Wall anchor assembly

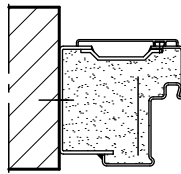


(Closed frame)

### Installation with block frame

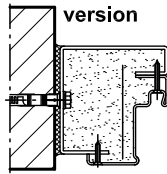
Flush installation between  
 concrete walls  $\geq 100$  mm  
 masonry walls  $\geq 115$  mm

#### Standard



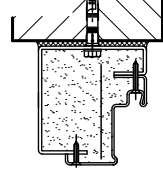
type 1.1

#### Disassembled version



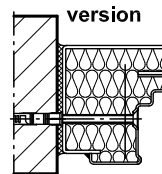
type 2.1

#### in front of the reveal

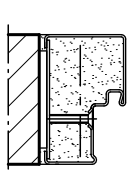


type 2.2

#### Pre-assembled version



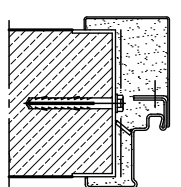
type 3



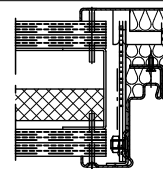
type 4.1

**Installation in autoclaved aerated concrete walls** (doors with top door closer) Made of autoclaved aerated concrete blocks or high precision units in acc. with DIN 4165 strength class 4 min. 175/200 mm or made of reinforced autoclaved aerated concrete slabs strength class 4. Wall thickness min. 175/200 mm

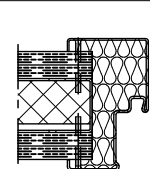
#### Wall plug assembly



**Installation in Lightweight construction stud walls** (doors with top door closer) F90 in acc. with DIN 4102 Part 4 or in acc. with general building authority approval. Wall thickness min. 100 mm. For permissible walls refer to the installation details tab.



Corner frame with Counter frame



Closed frame