



## Highly flame-resistant steel trap door / door T 60-1-FSA „Teckentrup 62“

thin rebated, optionally with glazing

### Text example:

T 60-1-FSA fire-proof steel door tested as per EN 1634-1 (DIN 4102). Single-leaf door element, can be used right/left handed. Door leaf 62 mm thick, rebated on 3 sides, with seal. Corner frame 1.5 mm thick with 3-sided seal. Leaf and frame galvanized and prime coated in Grey white, similar to RAL 9002. Mortice lock with latch lever as per DIN 18250, prepared for profile cylinder. Black plastic handle set, handle pivoted on bearing, with tumbler insert (Bb) and 1 Bb key. 1 spring hinge, 1 KO-hinge with ball bearing, 2 security bolts. "Teckentrup 62" or equivalent.

(Compile and tender according to requirements. Please refer to technical data below for respective details. Updated 1. July 2017.)

### Technical data

<b>Building authority approval:</b>	Z-6.20-1910 tested as per DIN 4102 (EN1634-1) for installation in internal walls. Heat transfer coefficient as per EN ISO 12567-1 (without glazing) $U_D = 1,3 \text{ W/m}^2\text{K}$ (1,0 mm sheet)	<b>Glazing</b>	Fire-resistant glass "Promaglas 60", 25 mm thick. Max. pane size 741 x 1658 mm. Round glazing Ø 300, Ø 400 and Ø 500. Steel glass holding strip, galvanized and prime coated in Grey white, similar to RAL 9002.
<b>Installation in</b>	<ul style="list-style-type: none"> <li>Masonry wall min. 115 mm</li> <li>▪ Concrete wall min. 100 mm</li> <li>▪ Lightweight construction min. 100 mm stud wall</li> <li>▪ Autoclaved aerated concrete wall               <ul style="list-style-type: none"> <li>- as per DIN 4165 min. 115 mm</li> <li>- reinforced type min. 115 mm</li> </ul> </li> <li>▪ covered wood beams F 90</li> </ul> <p>* F 90 as per DIN 4102-4 or in accordance with general building authority test certificate. For permissible walls refer to the installation detail tab.</p>	<b>Special equipment</b>	<ul style="list-style-type: none"> <li>▪ Handle sets / Lever/Knob sets:               <ul style="list-style-type: none"> <li>- plastic - light metal</li> <li>- stainless steel</li> </ul> </li> <li>- with short plate or rose escutcheon (various makes)</li> <li>▪ prepared for rose escutcheon</li> <li>▪ locks               <ul style="list-style-type: none"> <li>profile cylinder 40,5 + 40,5 mm</li> <li>- panic locks</li> <li>block lock (must be provided)</li> </ul> </li> <li>top door closer DIN EN 1154               <ul style="list-style-type: none"> <li>- head assembly</li> <li>- with slide rail</li> <li>- with locking device</li> <li>- with smoke detector</li> <li>- ITS 96 (hidden)</li> </ul> </li> <li>▪ doors with glazing with top door closer</li> <li>▪ Electric door opener</li> <li>▪ Integrated lock inspector (bolt contact)</li> <li>▪ Integrated opening indicator (Reed contact)</li> <li>▪ Revolving door drives</li> <li>▪ Hold-open devices</li> <li>▪ Floor seals are retrofittable</li> </ul>
<b>Approved dimensions</b>	Modular dimension W 625- 1500 mm H 650- 4000 mm	<b>Ordering dimensions / (modular dimensions)</b>	<b>Clear passage size (corner frame)</b>
<b>Handing</b>	DIN right or DIN left	Width x height	width x height
<b>Door (trap door) leaf</b>	<ul style="list-style-type: none"> <li>▪ double skinned, <b>thin rebated</b></li> <li>▪ trap door 4-sided</li> <li>▪ Door rebated on three sides</li> <li>▪ Door leaf thickness: 62 mm</li> <li>▪ Sheet thickness: 0,75/1,0 mm</li> <li>▪ Security bolt: 2</li> <li>▪ Insulation: Mineral fibet board</li> </ul>	<b>Standard sizes</b>	
<b>Frame</b>	Corner frame 1,5/2,0mm thick, trap door with 4-sided, door with 3-sided seal. Installation of frame: screw-mounting. 3 per Side Special equipment: <ul style="list-style-type: none"> <li>▪ block-, counter- or closed frame</li> <li>▪ with floor recess</li> </ul>	750 x 875 875 x 875 1000 1250 1000 x 1000 1250 1250 x 1250	666 x 791 791 x 791 916 1166 916 x 916 1166 1166 x 1166
<b>Floor seals</b>	<ul style="list-style-type: none"> <li>▪ Retractable floor seal</li> <li>▪ sliding threshold seal</li> <li>▪ Buffer strip and seal</li> <li>Floor seal retrofittable</li> </ul>	<b>Standard sizes</b>	666 x 1961 2086 791 x 1836 1961 2086
<b>Surface</b>	Door leaf/Frame galvanized and prime coated, similar to RAL 9002 (Grey white)	750 x 2000 2125 875 x 1875 2000 2125	916 x 1961 2086 1041 x 1961 2086
<b>Hinges and closing devices</b>	<ul style="list-style-type: none"> <li>▪ 1 spring hinge 1 KO-hinge with ball bearing or</li> <li>▪ 2 KO-hinges with ball bearings and</li> <li>1 top door closer</li> <li>▪ Compensation rings for height adjustment</li> </ul>	1000 x 2000 2125 1125 x 2000 2125 1250 x 2000 2125 2250	1166 x 1961 2086 2211
<b>Fittings</b>	<ul style="list-style-type: none"> <li>▪ Mortice lock with latch lever DIN 18250</li> <li>▪ Black plastic handle set, handle pivoted on bearing with tumbler insert (Bb) and 1 Bb-key</li> </ul>		

(Special sizes: from 500 x 1750 to 1250 x 2500)

Further Qualifications  
(Special equipment):



Smoke proof in accordance to 1634-3/ DIN 18095 with top door closer



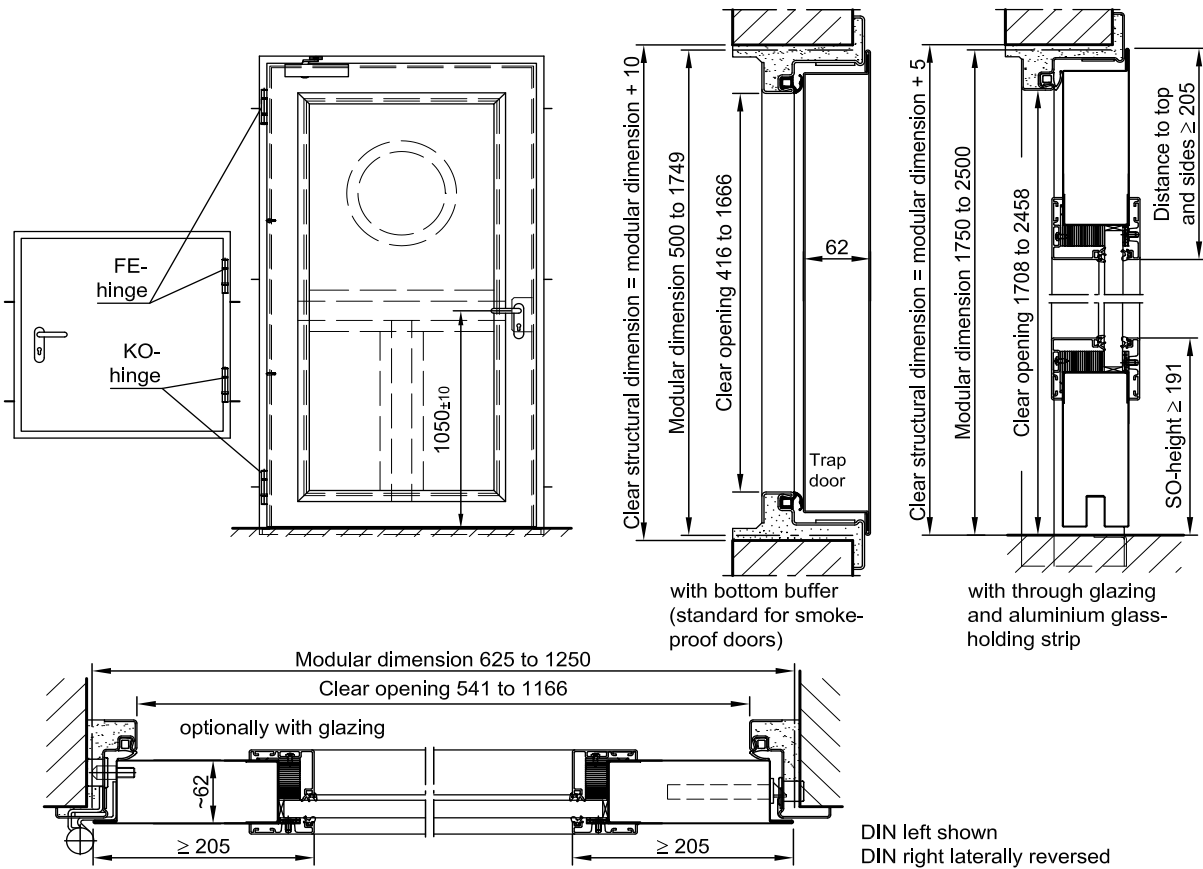
Sound insulated in acc. with DIN EN 20140/717 Part 1  
**RW 33dB** with retractable floor seal  
**RW 33dB** with bottom buffer and seal  
**RW 33dB** with sliding threshold seal



Burglar resistand in accordance with DIN EN 1627- RC 2 (WK 2), RC 3 (WK 3)

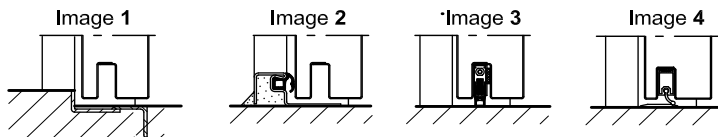
**Highly flame-resistant steel trap door / door**  
**T 60-1-FSA „Teckentrup 62“**

thin rebated, optionally with glazing



**Floor connections:**

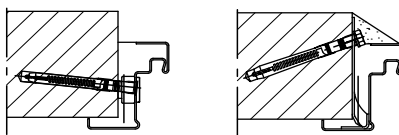
- Image 1: With bottom buffer
- Image 2: With bottom buffer/seal
- Image 3: With bottom seal (smoke-proof door with top door closer)
- Image 3: sliding threshold seal



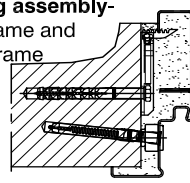
**Installation In masonry/ concrete walls**

concrete walls ≥ 100 mm  
masonry walls ≥ 115 mm

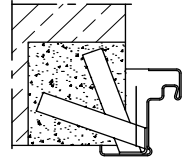
**Wall plug assembly**



**Wall plug assembly- closed frame and counter frame**



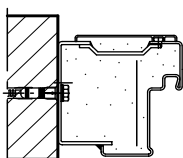
**Wall anchor assembly**



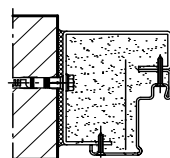
**Installation with block frame Flush installation between**

concrete walls ≥ 100 mm  
masonry walls ≥ 115 mm

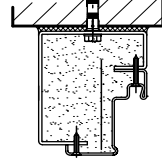
**Type 1.1**



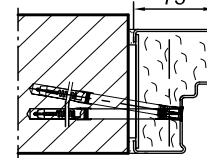
**Type 2.1 Disassembled version**



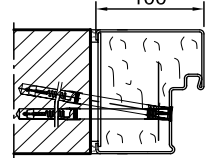
**Type 2.2 in front of the reveal**



**Type 4.1**



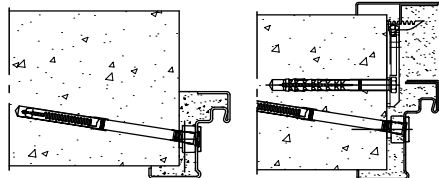
**Type 4.2**



**Installation in autoclaved aerated concrete walls**

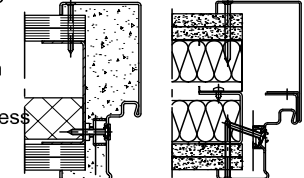
(doors with top door closer).  
Made of autoclaved aerated concrete blocks or high precision units in acc. with DIN 4165 strength class 4 min. 115 mm or made of reinforced autoclaved aerated concrete slabs strength class 4. Wall thickness min. 150 mm

**Wall plug assembly**



**Installation in lightweight construction stud walls**

(doors with top door closer) Installation walls F30 in acc. with DIN 4102 Part 4 or in acc. with general building authority test certificate, wall thickness min. 100 mm. For permissible walls refer to the installation details tab



Closed frame / Corner-counter frame