



## Highly flame-resistant steel door

### T 60-2-FSA „Teckentrup 62“

#### Text example:

T 60-2-FSA fire-proof steel door tested as per EN 1634-1 (DIN 4102). Double-leaf door element. Type of handing DIN right. Flush mounted door leaf without hinge stamping. Door leaf 62 mm thick, rebated on 3 sides. Corner frame 1.5 mm thick with 3-sided seal. Door leaf and frame galvanized and prime coated in Grey white, similar to RAL 9002. Active door leaf with mortice lock with latch lever, prepared for profile cylinder as per DIN 18250. FS-round handle set black (plastic), handle pivoted on bearing, with tumbler insert (Bb) and 1 Bb-key. Inactive door leaf with espagnolette bolt lock and standard top locking. 4 KO-hinges with ball bearings, top door closer as per DIN EN 1154, 1 door selector. 2-3 security bolts per leaf. "Teckentrup 62" or equivalent.

(Compile and tender according to requirements. Please refer to technical data below for respective details. Updated 1. July 2017.)

#### Technical data

<b>Building authority approval</b>	Z-6.20-1910 tested as per DIN 4102 (EN1634-1) for installation in internal walls. Heat transfer coefficient as per EN ISO 12567-1 (without glazing) $U_D = 1,4 \text{ W/m}^2\text{K}$ (1,0 mm sheet)	
<b>Installation in</b>	Masonry wall	min. 115 mm
	▪ Concrete wall	min. 100 mm
	▪ Lightweight construction stud wall	min. 100 mm
	▪ Autoclaved aerated concrete wall	
	- as per DIN 4165	min. 150 mm
	- reinforced type	min. 150 mm
	▪ covered wood beams	F 90
	* F 90 as per DIN 4102-4 or in accordance with general building authority test certificate. For permissible walls refer to the installation detail tab.	
<b>Approved dimensions</b>	Modular dimension width:	1375 - 2500 mm
	Modular dimension height:	1750 - 2500 mm
<b>Handing</b>	DIN right or DIN left	
<b>Door leaf</b>	Double-skinned, on 3 sides	<b>thin rebated</b>
	Door leaf thickness:	62 mm
	Sheet thickness:	0,75/1,0 mm
	Security bolts per leaf:	per leaf 2 - 3
	Insulation:	mineral fibre board
<b>Frame</b>	Corner frame 1,5 mm thick, with 3-sided seal. Installation of frame: screw-mounting. 3 per Side. Special equipment: <ul style="list-style-type: none"> <li>▪ block-, counter- or closed frame with floor recess.</li> </ul>	
<b>Floor seals</b>	<ul style="list-style-type: none"> <li>▪ Retractable floor seal</li> <li>▪ sliding threshold seal</li> <li>▪ Buffer strip and seal</li> </ul> Floor seal retrofittable.	
<b>Surface</b>	Door leaf/Frame galvanized and prime coated, similar to RAL 9002 (Grey white)	
<b>Hinges closing devices</b>	<ul style="list-style-type: none"> <li>▪ 4 KO hinges with ball bearings</li> <li>▪ top door closers</li> <li>▪ 1 door selector</li> <li>▪ Ausgleichsringe zur Höhenregulierung</li> </ul>	
<b>Fittings</b>	Active door leaf: <ul style="list-style-type: none"> <li>▪ Mortice lock with latch lever, prepared for profile cylinder in accordance with DIN 18250</li> <li>▪ FS round handle set, black (plastic). Handle pivoted on bearing, with tumbler insert (Bb) and 1 Bb key.</li> </ul> Inactive door leaf: <ul style="list-style-type: none"> <li>▪ Inactive leaf with espagnolette bolt with standard top locking.</li> </ul>	

#### Special equipment

- Handle sets\Lever\Knob sets:
  - plastic
  - light metal
  - stainless steel
  - with short plate or rose escutcheon (various makes)
- Prepared for rose escutcheon
- Locks
  - profile cylinder 40,5 + 40,5 mm
  - panic locks
  - block lock (must be provided)
- Top door closer DIN EN 1154
  - head assembly
  - with slide rail
  - with locking device
  - with smoke detector
  - ITS 96 (hidden)
- Panic locks
- Secured drive lock
- Electric door opener
- Integrated lock inspector (bolt contact)
- Integrated opening indicator (Reed contact)
- Revolving door drives
- Hold-open devices
- Central rebate seal

	Ordering dimensions (mod. dimensions) width x height	Clear passage size (corner frame) width x height
<b>Standard sizes</b>	1500 x 2000	1416 x 1961
	2125	2086
	1750 x 2000	1666 x 1961
	2125	2086
	2000 x 2000	1916 x 1961
	2125	2086
	2500	2461
	2125 x 2125	2041 x 2086
	2250 x 2250	2166 x 2211
	2500 x 2500	2416 x 2461

(Special sizes: from 1375 x 1750 to 2500 x 2500)

Further Qualifications  
(Special equipment):



Smoke proof in accordance to 1634-3/  
DIN 18095 with top door closer



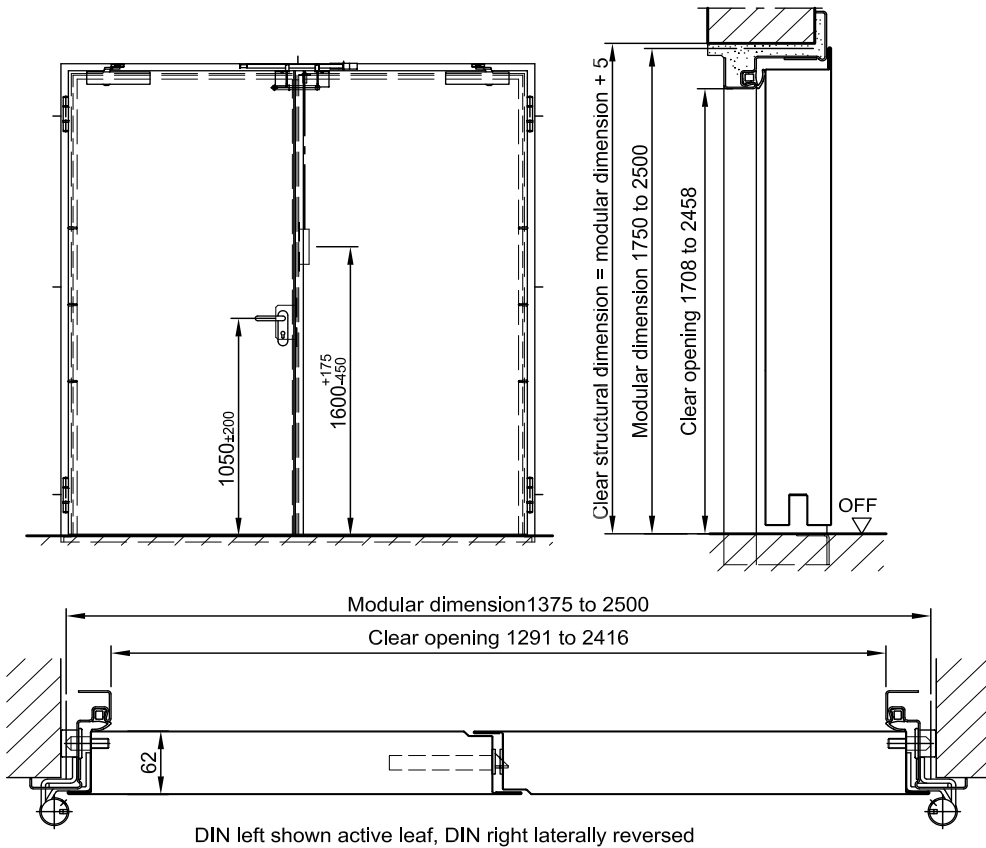
Sound insulated in acc. with DIN EN 20140/717 Part 1  
RW 33dB mit Bodendichtung absenkbar  
RW 33dB mit Anschlagsschiene und Dichtung  
RW 33dB mit Schleifdichtung



Burglar resistand in accordance with DIN EN 1627 - RC 2 (WK 2), RC 3 (WK 3)

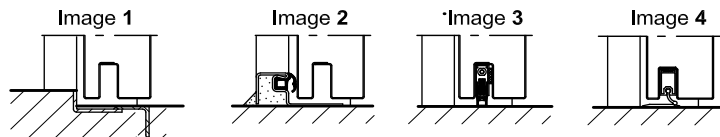


# Highly flame-resistant steel door T 60-2-FSA „Teckentrup 62“



**Floor connections:**

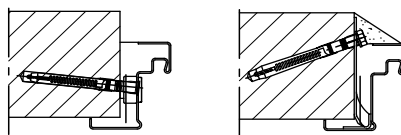
- Image 1: With bottom buffer
- Image 2: With bottom buffer/seal
- Image 3: With bottom seal (smoke-proof door with top door closer)
- Image 3: sliding threshold seal



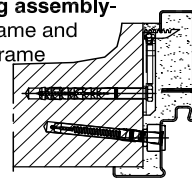
**Installation in masonry/ concrete walls**

- concrete walls ≥ 100 mm
- masonry walls ≥ 115 mm

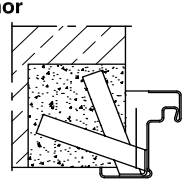
**Wall plug assembly**



**Wall plug assembly- closed frame and counter frame**



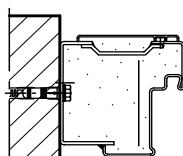
**Wall anchor assembly**



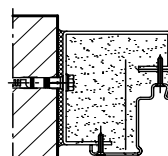
**Installation with block frame Flush installation between**

- concrete walls ≥ 100 mm
- masonry walls ≥ 115 mm

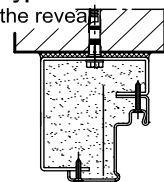
**Type 1.1**



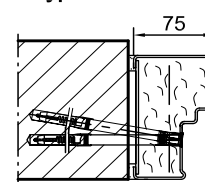
**Type 2.1 Disassembled version**



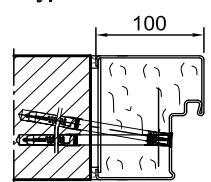
**Type 2.2 in front of the reveal**



**Type 4.1**



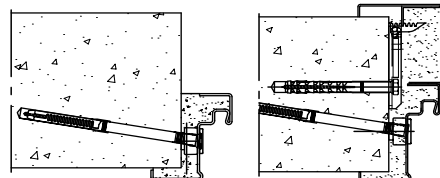
**Type 4.2**



**Installation in autoclaved aerated concrete walls**

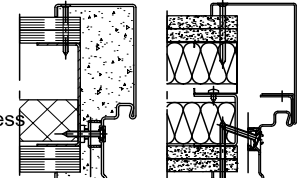
- (doors with top door closer).
- Made of autoclaved aerated concrete blocks or high precision units in acc. with DIN 4165 strength class 4 min. 115 mm or made of reinforced autoclaved aerated concrete slabs strength class 4. Wall thickness min. 150 mm

**Wall plug assembly**



**Installation in lightweight construction stud walls** (doors with top door closer)

- Installation walls F30 in acc. with DIN 4102 Part 4 or in acc. with general building authority test certificate, wall thickness min. 100 mm. For permissible walls refer to the installation details tab



Closed frame / Corner-counter frame