



Bullet-proof steel door dw 64-1 „Teckentrup BP“ Class FB4

(corresponds to Class M3 acc. to the audit regulations LKA-BW)

Available with optional glazing acc. DIN EN 1063 - BR 4 (NS = shatter proof on the inside)

Text:

dw 64-1 „Teckentrup BP“ FB4 bullet-proof steel door. Single leaf door element. Type of handling DIN right. Door leaf 64 mm thick with thin rebate, 3-sided rebated. Corner frame 2,0 mm thick with 3-sided seal, without floor recess. door leaf and frame galvanised and prime coated, grey white similar RAL 9002. Mortise lock with latch function, PC-perforated. Stainless steel lever handle set ES 3, handle pivoted on bearing.

2 Construction hinges, secured hinge bolt. Fabrikat „Teckentrup BP“ or equivalent.

(Compile and tender according to requirements. Please refer to technical data below for respective details. Updated 01.03.2021)

Technical data

Product	Bullet-proof steel door dw 64-1 „Teckentrup BP“ FB4 tested acc. DIN EN 1522 Class FB4 NS		Glazing	acc. DIN EN 1063 BR 4, with steel glass pane holding strip NS Innenseite splitterfrei Special equipment: ▪ Rectangular glazing (special size)
Installation in	▪ Masonry	min. 240 mm	Special equip- ment	<ul style="list-style-type: none"> ▪ Lever handle set/knob lever set: (various makes) with fixed knob outside ▪ Locks <ul style="list-style-type: none"> - Panic locks - Multipoint locking ▪ Profile cylinder 40.5 + 40.5 mm ▪ With retractable bottom seal ▪ Top door closer <ul style="list-style-type: none"> - Hinge-/opposite hinge side ▪ Electrical door opener ▪ Integrated lock inspector (bolt contact) ▪ Integrated opening indicator (reed contact) ▪ Aluminium-rain guard ▪ Safety chain (lockable)
	▪ Concrete	min. 140 mm		
Dimensions	Width:	750 - 1500 mm		
	Height:	1750 - 3000 mm		
Type of handling	DIN right or DIN left			
Door leaf	Double skinned, 3-sided rebated,	thin rebate		
	Door leaf thickness:	64 mm		
	Sheet thickness:	1.5 mm		
	Security bolt:	min. 1		
Frame	Corner frame 2.0 mm thick, galvanised with 3-sided seal without floor recess. Fastening by exposed masonry mounting. Special equipment: ▪ Corner-. counter frame			
Surface	Door leaf/frame galvanised and prime coated, grey white similar RAL 9002 Special equipment: ▪ RAL of choice			
Hinges and closing device	▪ 2 CO hinges with ball bearing (secured hinge bolt)			
Fittings	<ul style="list-style-type: none"> ▪ Mortise lock with latch function, PC perforated ▪ Stainless steel lever handle set ES 3, ▪ Handle pivoted on bearing 			

Further qualifications
(Special version)



Fire-resistant
acc. EN 1342-1 (DIN 4102)
T30



Sound insulated acc. DIN EN 20140/717 Part 1
bis RW 45dB

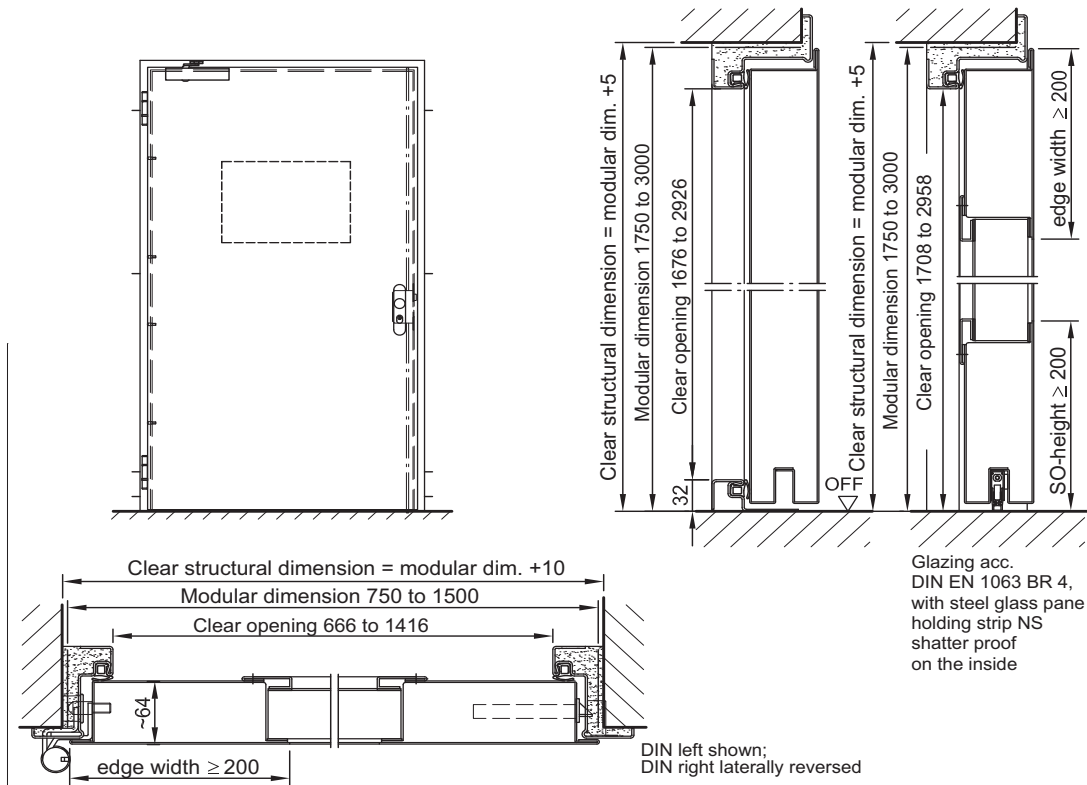


Burglar resistant acc.
DIN EN 1627 -
RC 4



Bullet-proof steel door dw 64-1 „Teckentrup BP“ Class FB4

(corresponds to Class M3 acc. to the audit regulations LKA-BW)
Available with optional glazing acc. DIN EN 1063 - BR 4 (NS = shatter proof on the inside)



Floor connections:

- Image 1: with bottom buffer
- Image 2: with bottom buffer/seal
- Image 3: with retractable bottom seal

Image 1

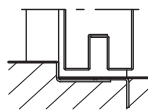


Image 2

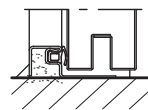
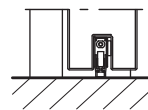
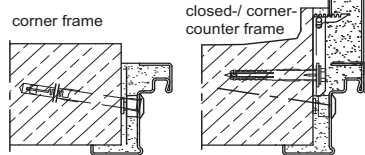


Image 3

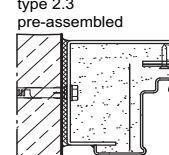


**Installation in masonry/
concrete walls**
concrete walls ≥ 140 mm
masonry walls ≥ 240 mm

Exposed masonry mounting



Flush edge installation



Please find a detailed installation overview in the planning-, installation- and maintenance manual for 1-leaf and 2-leaf doors.