

Fire-resistant steel roller shutters 4020 M.2.



Fire resistances EW 30, 45, 60, 90 - C2 (DP1)

Text example

Compile and tender according to requirements.

Please refer to technical data below for respective details.

Updated 1st October 2015



Position	No. of pieces	item	unit price €	total price €
		Fire-proof Roller shutter 4020 M.2, EW 30-EW 90, galvanized steel profiles, double-skinned, with mineral wool filling.		
		Make: Teckentrup or equivalent. Fire-proof Roller shutter 4020 M.2, steel, double-skinned. Drive: electrical drive (socket) 400 V, 50 Hz, 60% ED, IP54, emergency release crank. Control: CS 310 emits pulses via digital limit switches, IP 65, 24 V, and protection of lower edge from opto-sensors, CEE-plug 16A/5-pin. Installation: in front or behind of the opening, in brick-work or concrete, all fastening elements, suitable for structure material, are supplied. ordering dimensions: ___ mm wide x ___ mm high. Ordering sizes: Wall and header thickness concrete ___ mm / masonry ___ mm), headroom ___ mm, sideroom right-hand ___ mm, left-hand ___ mm. Ordering details:		

Technical data

Fire resistances

EW 30, 45, 60, 90 - C2 (DP1)

Installation:

Vertical guide rails must be mounted in a fixed support structure with a minimum density of 613 kg/m³ and a minimum wall thickness of 250 mm using M10 threaded rods with maximum 750 mm spacing.

The supporting brackets must be mounted in a fixed supporting structure with a minimum density of 1,200 kg/m³ and a minimum wall thickness of 250 mm using threaded rods and FISCHER chemical anchors or mechanical fasteners.

Steel "U" profiles between the translation and the vanes are to be fastened using M10 threaded rods at intervals of 800-860 mm.

The vertical guide rails are to be mounted under the cylinder onto a reinforced steel profile measuring 80 x 80 x 3 mm, coated with a layer of PROMATECT H sheeting.

Door sizes:

Shutter sizes
EW 30, 45, 60, 90
Width: 2.000 - 5.700 mm
Height: 2.510 - 5.700 mm

Surface:

Steel plates coated with galvanised steel. Optional RAL finish (single or double) + anti-wear stainless steel plates.

Shutter curtain:

These consist of plates which are connected together with a special locking function.

Profiles:

Galvanised sheet steel thinned to 1 mm thick and filled with mineral wool.

Lower finishing profile:

A steel "C" profile is used to place the last slat onto the non-flammable Sico silicone profile..

Guide rails:

Galvanised steel with a thickness of 2.5 mm (82 x 110 mm) with PROMASEAL foaming tape

Roller pipe:

Steel pipe primed on both sides and fitted sleeves for mounting the drive and bearings.

Brackets:

Made from 4 mm thick galvanised steel sheet

Drives and control units:

Direct drive with integrated facilities related to the roller shutter.

Version 1.

(Standard):

TAR type electrical drive (socket) 400 V, 50 Hz, 60% ED, IP54, emergency release crank. Operating temperature range: -20°C to +60°C. The CS 310 control unit emits pulses via digital limit switches, IP 65, 24 V, and protection of lower edge from opto-sensors, CEE-plug 16A/5-pin. Operating temperature range: -10°C to +45 °C.

Version 2.

(Subject to surcharge):

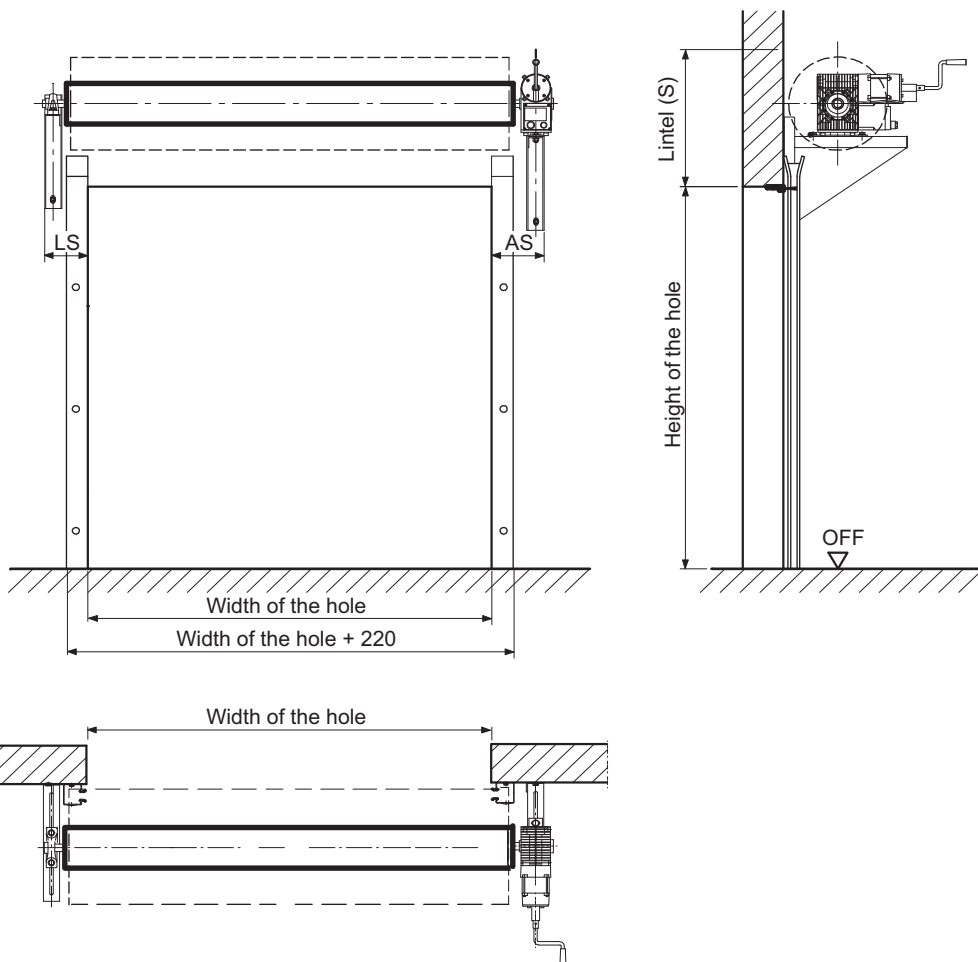
FDF type electrical drive type (socket) 400 V, 60% ED, IP 54 incl. 24 V DC motor for closing the shutter in case of power failure. Operating temperature range: -20°C to +60°C. The FS 345 control unit emits pulses based on the CS 300FS control unit via mechanical limit switches. The FS 345 control unit with a backup battery, charger, sound signalling, and protection of lower edge from opto-sensors, CEE-plug 16A/5-pin. **IMPORTANT NOTICE! According to the manufacturer, the backup battery must be tested for functionality at least every four days!**

Further documents:

Dimensions for construction readiness can be found on the final page of this prospectus. An individual assembly drawing with specific dimensions will be created for each shutter.

Fire-resistant steel roller shutters 4020 M.2.

Fire resistances EW 30, 45, 60, 90 - C2 (DP1)



drive	AS (mm)	LS (mm)
TAR	350 (400*)	250 (300*)
FDF	350 (400*)	250 (300*)
*cover with armor		

Construction data

Status 11.2015

Fire-resistant steel roller shutters -
4020 M.2 EW 30, EW 45, EW 60, EW 90, DP1, C2